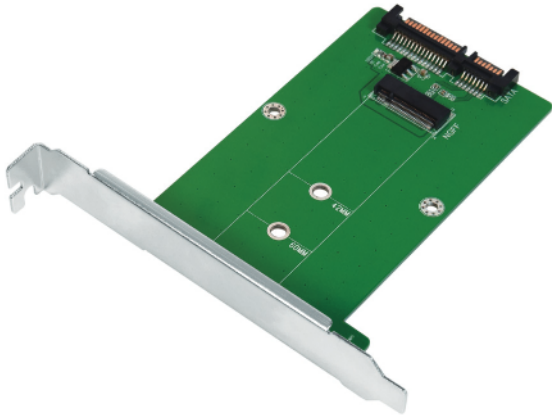


LogiLink®

SATA to M.2 SATA SSD Adapter

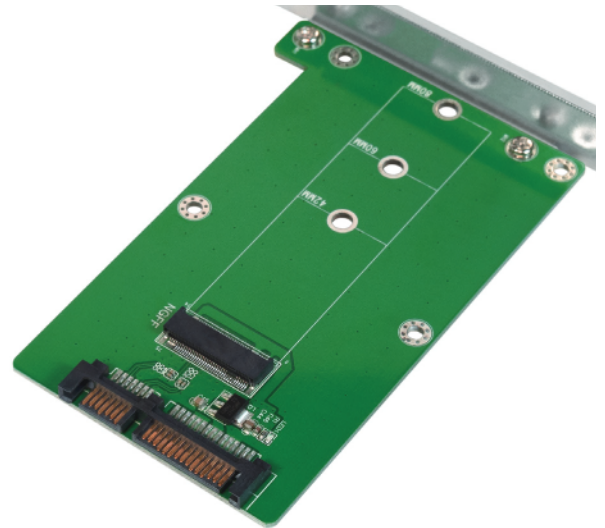
Art. No.: PC0085



PC0085 is an easy and discreet way to expand the overall storage capacity of your desktop PC or server with M.2 SSDs.

Features:

- » Converts M.2 (B Key or B+M Key) interface to SATA III 6Gbps interface (SATA cable connection required)
- » Supports M.2 (NGFF) SSD: 22*42mm, 22*60mm, 22*80mm
- » LED indicates power and data transfer status
- » Supports Windows, MAC OS and Linux



Package Contents:

- » 1 x Adapter Card
- » 1 x Screw Package
- » 1 x Screwdriver
- » 1 x User Manual

Package Information:

- » Packing Dimension: 150 x 135 x 30mm
- » Packing Weight: 0.1kg
- » Carton Dimension: 350 x 322 x 300mm
- » Carton Q'ty: 40pcs
- » Carton Weight: 4kg



PC0085



Made in China



RoHS
compliant



*The specifications and pictures are subject to change without prior notice.
*All trade names referenced are the registered trademarks of their respective owners.

Best Connectivity