

ALUMINIUM CASE FOR RASPBERRY PI 4

RB-AlucaseP4+08



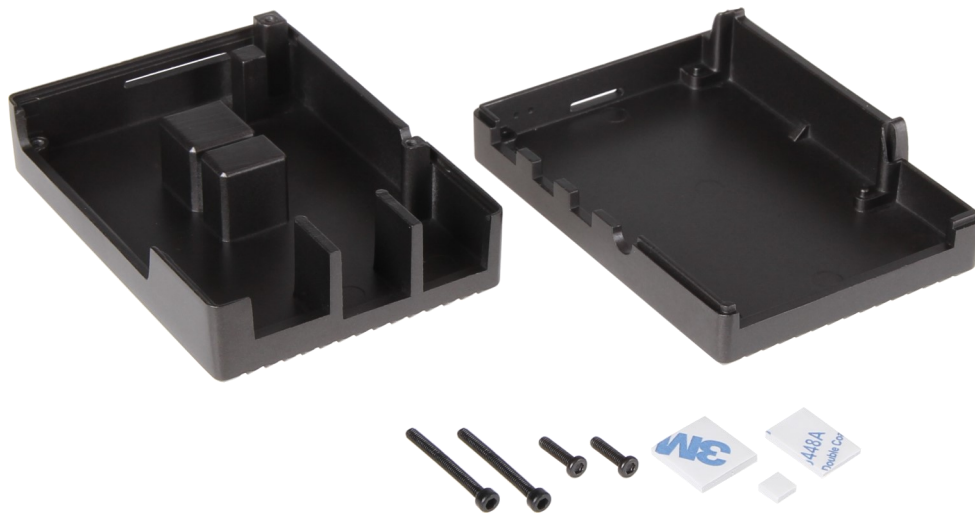
1. GENERAL INFORMATION

Dear customer,

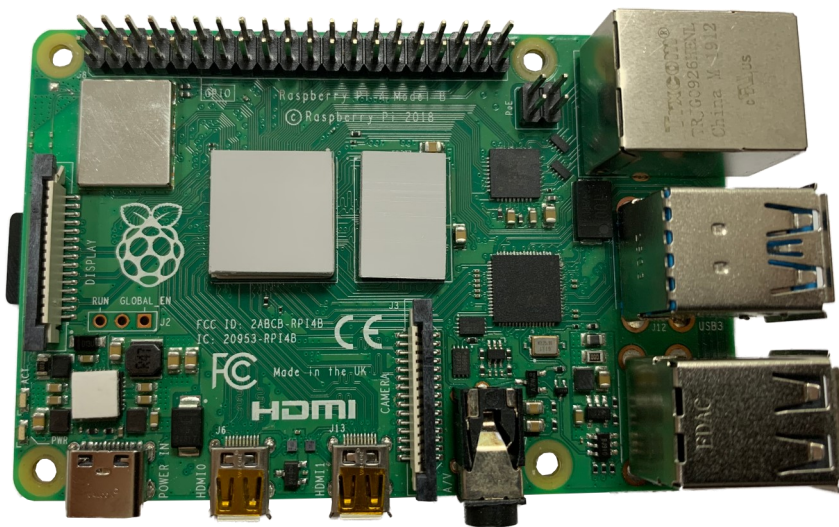
Thank you for purchasing our product. In the following, we will show you which things should be noted during the use.

Should you encounter any unexpected problems, do not hesitate to contact us.

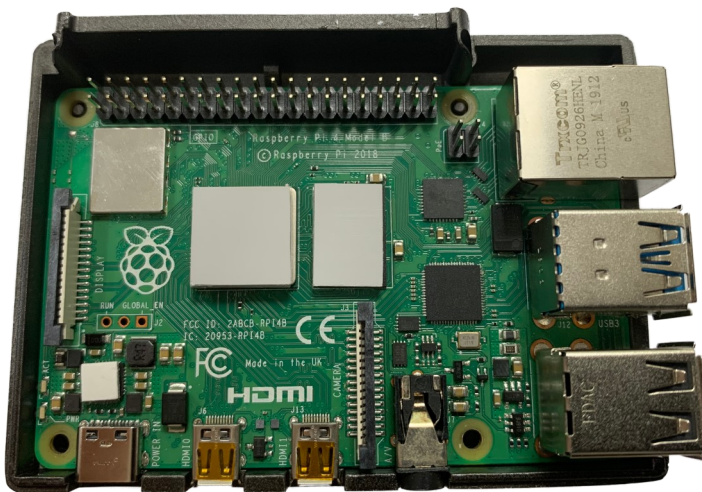
2. ASSEMBLY



1. Stick the heat-conducting pad on the Raspberry Pi 4 like shown in the following picture:



2. Next, you have to put your Raspberry Pi 4 into the bottom side of the case.



3. Now put the top onto the bottom part and turn around the Raspberry Pi 4 with the case .



4. The case must be screwed tight now. Do this at the bottom part of the case. Thereby please note that the shorter screws must be used on the side with the HDMI ports and the longer ones on the side of the GPIO pins. The screws can be tightened with the help of the allen key included in the scope of delivery.



3. OTHER INFORMATION

Our Information and Take-back Obligations according to the German Electronic Law (ElektroG)



Symbol on Electrical and Electronic Products:

This crossed-out bin means that electrical and electronic products do not belong into the household waste. You must hand over your old appliance to a registration place. Before you can hand over the old appliance, you must remove used batteries and replacement batteries which are not enclosed by the device.

Return Options:

As the end user, you can hand over your old appliance (which has essentially the same functions as the new one bought with us) free of charge for disposal with the purchase of a new device.

Small devices, which do not have outer dimensions bigger than 25 cm can be handed in for disposal independently of the purchase of a new product in normal household quantities.

1. Possibility of return at our company location during our opening hours

Simac Electronics Handel GmbH, Pascalstr. 8, D-47506 Neukirchen-Vluyn

2. Possibility of return nearby

We will send you a parcel stamp with which you can send us your old appliance free of charge. For this possibility, please contact us via e-mail at service@joy-it.net or via telephone.

Information about Package:

Please package your old appliance safe for transport. Should you not have suitable packaging material or you do not want to use your own material, you can contact us and we will send you an appropriate package.

4. SUPPORT

If any questions remained open or problems may arise after your purchase, we are available by e-mail, telephone and ticket support system to answer these.

E-Mail: service@joy-it.net

Ticket-system: <http://support.joy-it.net>

Telephone: +49 (0)2845 98469 – 66 (10 - 17 o'clock)

For further information visit our website:

www.joy-it.net