

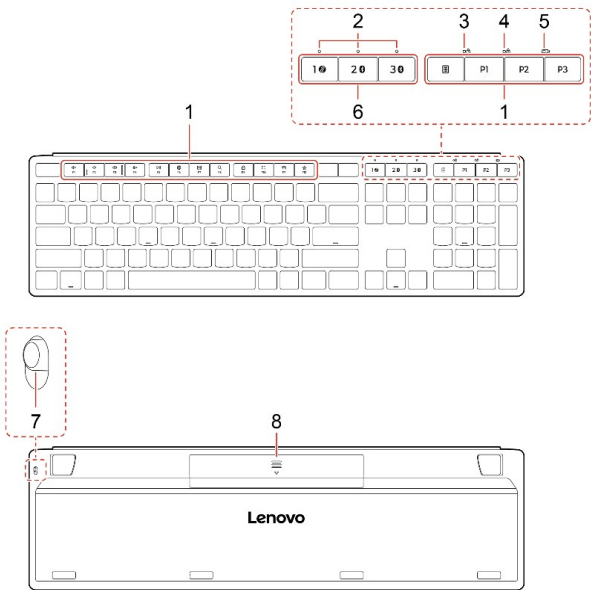
Lenovo 700 Modern Multi-Device Wireless Combo

About the product

The keyboard and mouse offer quiet, comfortable control and seamless connectivity. Use Bluetooth or 2.4GHz to switch between up to three devices for uninterrupted productivity.

Note: Images shown are for illustration only and may differ slightly from the actual product.

Overview



1. Programmable keys

2. Connection indicators

- Blinking quickly: Pairing mode
- Blinking slowly: Connecting
- Solid white: Connected (the indicator turns off after a few seconds)

3. Num lock indicator

4. Caps lock indicator

5. Battery status indicator

- Solid white: Powered on (the indicator turns off after a few seconds)
- Blinking amber: Low battery (replace the batteries)

6. Wireless channels connection keys

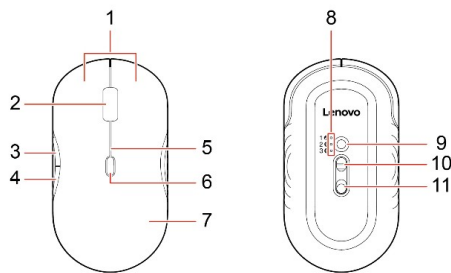
- Short press: Switch channels.
- Press and hold for two seconds: Connect through the current wireless channel.

7. Power switch

8. Battery and receiver compartment cover

Note: Note: You can customize the function of the programmable keys via [Lenovo Accessories and Display Manager \(LADM\)](#).

Function keys	Description
F1	Mute/Unmute the speaker.
F2	Decrease the speaker volume.
F3	Increase the speaker volume.
F4	Mute/Unmute the microphone.
F5	Play/Pause a multimedia file.
F6	Launch the default Web browser.
F7	Switch between tasks.
F8	Start the operating system search.
F9	Lock the computer screen.
F10	Take a screenshot.
F11	Open Smart Share/Phone Link.
F12	Open Lenovo AI Portal/Lenovo Official Site.



1. Left and right buttons

2. Scroll wheel

3. Forward button

4. Backward button

5. DPI/Battery indicator

- Solid white: Powered on (the indicator turns off after a few seconds)
- Blinking amber: Low battery (replace the batteries)
- Blinking white:
 - Once: The DPI 1 setting is enabled.
 - Twice: The DPI 2 setting is enabled.
 - Three times: The DPI 3 setting is enabled.

6. DPI button

7. Battery and receiver compartment cover

8. Connection indicators

- Blinking quickly: Pairing mode
- Blinking slowly: Connecting
- Solid white: Connected (the indicator turns off after a few seconds)

9. Wireless channels connection button

- Short press: Switch channels.
- Press and hold for two seconds: Connect through the current wireless channel.

10. Optical sensor

11. Power switch

Note: You can customize the function of the scroll wheel (middle-clicking and acceleration level), the forward button, the backward button, and the DPI button via LADM.

Download the software

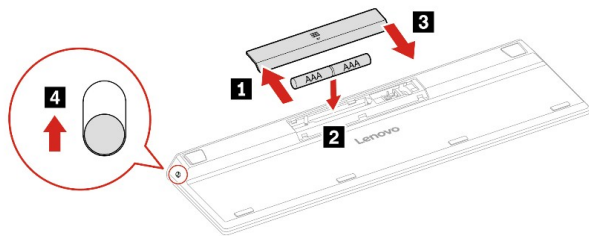
Lenovo Accessories and Display Manager (LADM) is a software platform designed for the efficient use and easy setup of compatible Lenovo products. Through LADM, you can customize programmable keys or buttons, DPI settings, receiver settings, and more.



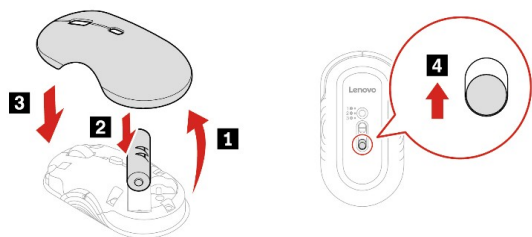
To download LADM, go to <https://support.lenovo.com/downloads/ladm>.

Set up the product

Keyboard



1. Remove the battery and receiver compartment cover.
2. Insert two AAA batteries (match polarity indicators).
3. Reinstall the cover.
4. Turn on the power switch.



Mouse

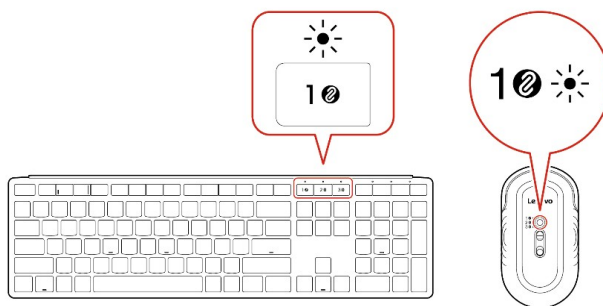
1. Remove the battery and receiver compartment cover.
2. Insert one AA battery (match polarity indicators).
3. Reinstall the cover.
4. Turn on the power switch.

Use the product

Wireless pairing

You can connect up to three devices to this product using a Lenovo Pro USB Unified Pairing Receiver and Bluetooth, and switch between them.

Pair with USB receiver



The receiver is pre-paired with the product. Install the receiver into a USB-A connector on your device to directly connect the device to your product.

Notes:

- Ensure that the distance between your product and the receiver is within 30 cm.
- If it doesn't work, re-pair the receiver with the product via LADM and follow the instructions below:

Keyboard

1. Press and hold the wireless channels connection key (receiver channel) for two seconds (the indicator blinks quickly).
2. The product is successfully connected (the indicator turns solid white for a few seconds and then turns off).

Mouse

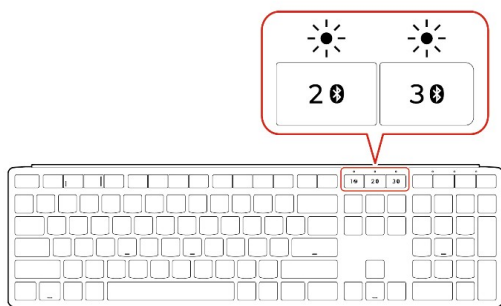
1. Short-press the wireless channels connection button (the indicator blinks slowly), then press and hold it for two seconds (blinks quickly).
2. The product is successfully connected (the indicator turns solid white for a few seconds and then turns off).

Pair with Bluetooth

You can connect up to two devices to this product using Bluetooth.

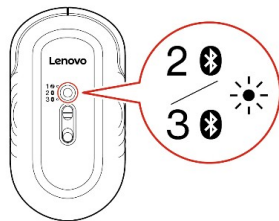
Note: Keep the product close to the device during pairing.

Keyboard



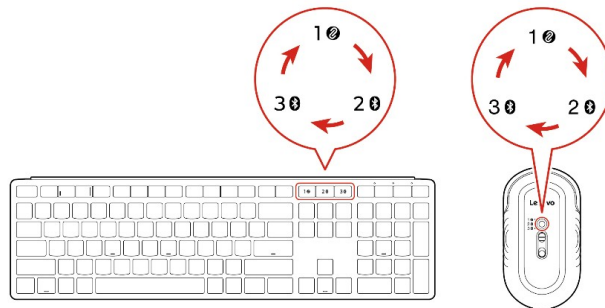
1. Press and hold the wireless channels connection key (Bluetooth channel) for two seconds (the indicator blinks quickly).
2. In your device's Bluetooth menu, select the keyboard.
3. The product is successfully connected (the indicator turns solid white for a few seconds and then turns off).
4. Repeat the above steps to connect to a third device if needed.

Mouse



1. Short-press the wireless channels connection button (the indicator blinks slowly), then press and hold it for two seconds (blinks quickly).
2. In your device's Bluetooth menu, select the mouse.
3. The product is successfully connected (the indicator turns solid white for a few seconds and then turns off).
4. Repeat the above steps to connect to a third device if needed.

Select the paired device



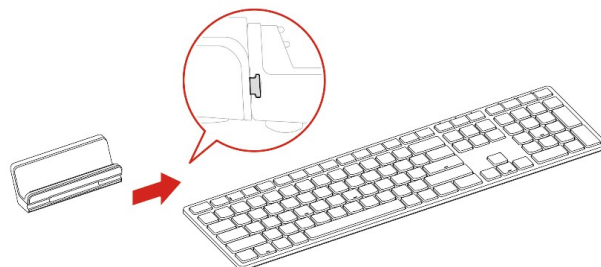
To switch between the paired devices, short-press the wireless channels connection keys or button until the desired connection indicator turns on.

Use the phone stand

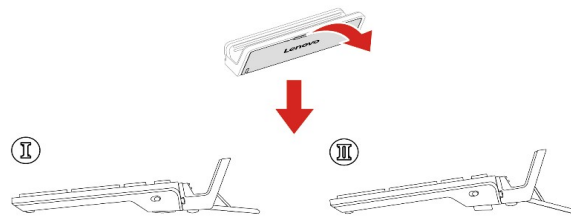
Elevate your workspace with the Lenovo Integrated Phone Stand for Modern Keyboard. Detachable for flexible desk use, it's built with high-quality materials for stability, decluttering your space to boost efficiency.

Follow the instructions below to use it if needed:

1. Attach the phone stand to the keyboard.



2. Adjust it to work with the keyboard properly.



3. Place your keyboard or phone on it.

