



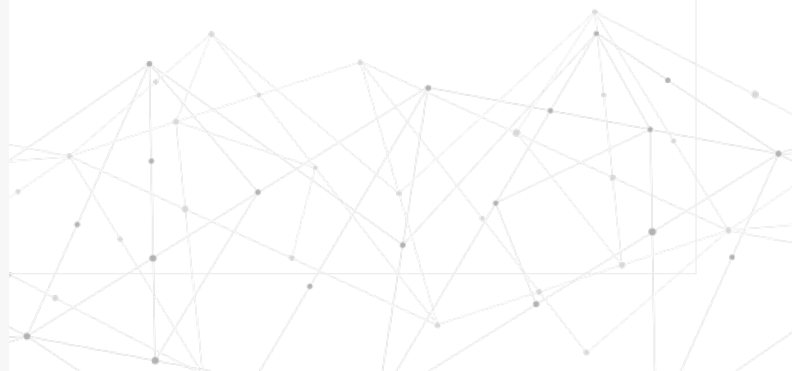
LATITUDE

3440

**Thin client solution with
Dell Cloud Client Workspace**

Modern design with up-leveled essential productivity features for every business.

Configure your Latitude 3440 with Dell ThinOS, Dell Hybrid Client or Windows 10 IoT Enterprise and power your VDI environment with a smarter user experience, stronger security and easier IT management.



LATITUDE

3440

Thin client solution with Dell Cloud Client Workspace

Modern design with up-leveled essential productivity features for every business.

Confidently access VDI environments with versatile thin client software solutions and a broad range of essential features built for any business and any budget.

Ideal for task-oriented professionals, educators, and students performing advanced curriculum who are driven to produce results and strive for efficiency. They need enterprise-level security and collaboration features that help them stay productive.

• • •

Secure access to digital and virtual workspaces

Versatile thin client operating system options and centralized control from Wyse Management Suite. Configure your Latitude 3440 with Dell ThinOS, Dell Hybrid Client or Windows 10 IoT Enterprise to power your VDI environment with a smarter user experience, stronger security and easier IT management

• • •

Up-leveled Performance

13th Generation Intel® Core™ Processors up to i7 (based on OS option*). Offering a vast array of memory options.

• • •

All new modern, design

Re-designed chassis featuring a new color and texture.

• • •

New enhanced keyboard

Improved backlit keyboard (optional) with durable, laser-etched key prints, and longer key travel for increased comfort.

Upgraded clickpad

Work comfortably on the new clickpad featuring improved feel for better productivity.

• • •

Sustainable design

Our most sustainable Latitude 3000 series yet, featuring components made with post-consumer recycled plastics.

• • •

Optional FHD IR Camera

Collaborate more confidently.

• • •

Privacy Control

Mechanical privacy camera shutter.

• • •

Upgraded Audio

Experience improved audio quality for better collaboration.

• • •

Wi-Fi 6 & Wi-Fi 6E connections

Wi-Fi 6E allows 7 more channels for more bandwidth which provides faster, smoother Wi-Fi, especially in high-density areas (based on OS option*).

• • •

Outstanding run-time

Multiple battery options up to 54Whr, and rapid reload up to 80% in 75 minutes.



* Offering may vary by operating system. Refer to the technical specifications for more details. Some items may be available after product introduction.

Uses 100% recycled and renewable packaging, including multipack options.

3440

Thin client solution with Dell Cloud Client Workspace

Cloud Client Workspace.

Meet the evolving needs of the workforce and increase efficiency without compromising on security with Cloud Client Workspace software and Dell thin client solutions. Software and client devices designed to enhance virtual workspaces with smarter user experiences, stronger security.

Dell ThinOS¹

The most secure thin client OS* is purpose-built for VDI to deliver a simplified end-user and IT experience.

Dell Hybrid Client¹

Modern thin client software with incredible flexibility allowing secure access to applications and data, wherever they live – whether that’s in the data center, the cloud or the local device.

Windows 10 IoT Enterprise¹

Power and familiarity of Windows® in a thin client optimized by Dell with robust security features and flexible management options.

Wyse Management Suite

An enterprise-class solution that provides modern and secure management of all your Dell thin client solutions from anywhere. Securely manage a distributed workforce with a hybrid cloud solution designed to meet all deployment levels.

Laptop, All-in-One and desktop form factor options give you the freedom to create a personalized virtual workspace. Work in confidence anywhere and enable a more productive and collaborative VDI experience with our new premium devices.



OptiPlex 3000 Thin Client

The OptiPlex 3000 Thin Client delivers a quiet, durable computing experience and makes it easier for you to multi-task.



OptiPlex All-in-One

Work in comfort and style with a sleek, new All-in-One design with collaboration and security features built in.



OptiPlex Micro Form Factor**

Ultra-compact desktop designed to free up workspaces.



Latitude 3440

Tackle tasks with this modern laptop equipped with upgraded features.



Latitude 5440

Achieve the perfect balance with this scalable laptop that boast impressive power.

Enhance your virtual workspaces with more security and agility.

Secure by design

Work confidently with solutions designed to augment the security of your VDI and cloud environments.

Optimized user experience

Access digital and virtual workspaces with unprecedented simplicity and flexibility.

Simplified IT management

Modern management with hybrid cloud deployment provides greater control and agility.

[Click here to learn more about Cloud Client Workspace](#)

* Based on Dell analysis of Dell ThinOS v. competitive products, January 2023.
 ** Dell ThinOS is not available to configure with the OptiPlex Micro Form Factor.

LATITUDE 3000

Sustainability on Dell Latitude 3000 series

Delivering innovative technology and solutions to reduce our environmental impact, for ourselves and our customers.

Sustainable Materials

Our use of sustainable materials helps reduce the environmental impact of making and recycling them.*



Latitude 3340 and Latitude 3340 2-in-1:
50% recycled plastics in bezel, battery housing
and AC adapter exterior (upsell only), 30%
recycled plastics in the lids and bottom door

Latitude 3440 and Latitude 3540
50% recycled plastics in bezel, bottom door,
battery housing and AC adapter exterior (upsell
only), 30% recycled plastics in the palm rest

Packaging Innovation

Ships in new enhanced **100% recycled or renewable packaging that is also 100% recyclable.**+++ Multipack shipping available on eligible products.



Ecolabels

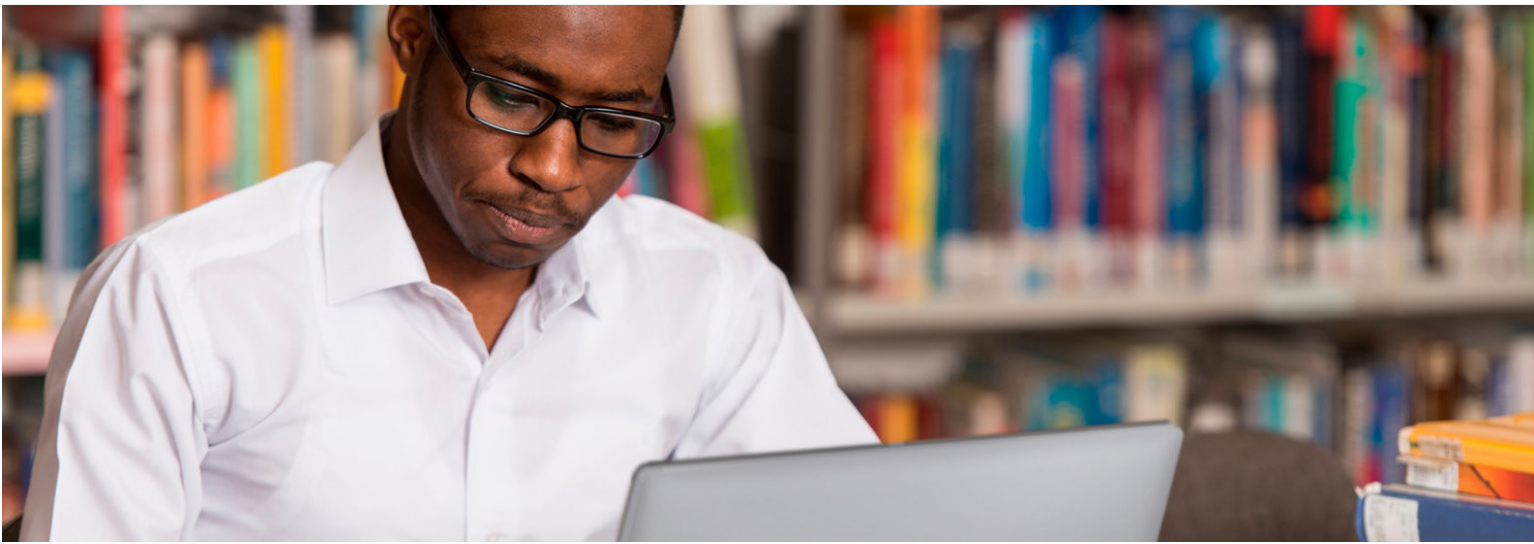
Eco-labeling standards drive sustainability further by helping customers understand electronic products and the companies that make them. This product meets the following standards:



Recycle

Securely and responsibly retire your IT equipment with Dell regardless of brand, in support of a circular economy. Learn more at Dell.com/Recycle

See how we are reducing the impact of our products and solutions
Dell.com/Sustainable-Devices



RECOMMENDED SOLUTIONS WITH CLOUD CLIENT WORKSPACE

HOME



Dell 24 USB-C Hub Monitor - P2422HE

Stay productive, no matter where you work. Reduce harmful blue light with this sleek 23.8-inch FHD hub monitor with ComfortView Plus.



Dell Pro Webcam - WB5023

Experience industry leading video quality and picture clarity in any lighting with this intelligent 2K QHD webcam.



Dell Mobile Wireless Mouse - MS3320W

Work efficiently. Easy dual-mode connectivity offers you the option to pair and connect to almost any PC via 2.4GHz wireless or Bluetooth 5.0.



Dell Wired/Wireless Headset - WH3022

Experience great audio clarity with this Teams certified wired headset that provides convenient call controls at your fingertips.

OFFICE



Dell 24 Video Conferencing Monitor - C2423H

Stay in sync on a 24-inch FHD monitor with built-in conferencing essentials, low blue light and an eco-friendly design.



Dell Pro Wireless Keyboard and Mouse - KM5221W

Enhance your everyday productivity with a quiet full-size keyboard and mouse combo that offers programmable shortcuts and 36 months battery life.



Dell USB-C Dock - WD19S 130W

Boost your PC's power up to 90W with ExpressCharge on the world's most powerful and first modular USB-C dock with a future-ready design.^{16,17}

3440 Thin client solution with Dell Cloud Client Workspace

FEATURE TECHNICAL SPECIFICATION

THIN CLIENT SOLUTION ¹⁷	Latitude 3440 with Dell ThinOS	Latitude 3440 with Dell Hybrid Client	Latitude 3440 with Windows 10 IoT Enterprise LTSC 2021
THIN CLIENT OPERATING SYSTEM¹	Dell ThinOS ¹	Dell Hybrid Client with Ubuntu [®] 22.04 LTS, 64-bit ¹	Windows 10 IoT Enterprise LTSC 2021
PROCESSOR OPTIONS¹	12th Generation Intel [®] Celeron [®] 7305, 8 MB cache, 5 cores, 5 threads, up to 1.10 GHz 12th Generation Intel [®] Core [™] i3-1215U, 10 MB cache, 6 cores, 8 threads, up to 4.40 GHz Turbo 13th Generation Intel [®] Core [™] i5-1335U, 12 MB cache, 10 cores, 12 threads, up to 4.60 GHz Turbo Additional option coming soon 13th Generation Intel [®] Core [™] i3-1315U, 10 MB cache, 6 cores, 8 threads, up to 4.50 GHz Turbo 13th Generation Intel [®] Core [™] i5-1345U, 12 MB cache, 10 cores, 12 threads, up to 4.70 GHz Turbo	13th Gen Intel [®] Core [™] processors up to i7, U15 12th Gen Intel [®] Celeron [®] and Core [™] i3 processors, U15	12th Generation Intel [®] Celeron [®] 7305, 8 MB cache, 5 cores, 5 threads, up to 1.10 GHz 12th Generation Intel [®] Core [™] i3-1215U, 10 MB cache, 6 cores, 8 threads, up to 4.40 GHz Turbo 13th Generation Intel [®] Core [™] i3-1315U, 10 MB cache, 6 cores, 8 threads, up to 4.50 GHz Turbo 13th Generation Intel [®] Core [™] i5-1335U, 12 MB cache, 10 cores, 12 threads, up to 4.60 GHz Turbo 13th Generation Intel [®] Core [™] i5-1345U, 12 MB cache, 10 cores, 12 threads, up to 4.70 GHz Turbo
MEMORY OPTIONS^{1,2,3}	8 GB, 1 x 8 GB, DDR4, 3200 MHz, single-channel 16 GB, 2 x 8 GB, DDR4, 3200 MHz, dual-channel Up to 32 GB DDR4 3200 MHz (socketed) - coming soon	Up to 64 GB DDR4 3200 MHz (socketed)	Up to 32 GB DDR4 3200 MHz (socketed)
CHIPSET¹	Integrated with the processor	Integrated with the processor	Integrated with the processor
GRAPHICS^{1,12}	Integrated: Intel [®] Iris [®] Xe Graphics with Intel [®] Core [™] i5/i7 processors and dual-channel memory configuration Intel [®] UHD Graphics with Intel [®] Celeron [®] and Core [™] i3 processors or single channel memory	Integrated: Intel [®] Iris [®] Xe Graphics with Intel [®] Core [™] i5/i7 processors and dual-channel memory configuration Intel [®] UHD Graphics with Intel [®] Celeron [®] and Core [™] i3 processors or single channel memory Discrete: NVIDIA [®] GeForce [®] MX550, 2 GB GDDR6	Integrated: Intel [®] Iris [®] Xe Graphics with Intel [®] Core [™] i5/i7 processors and dual-channel memory configuration Intel [®] UHD Graphics with Intel [®] Celeron [®] and Core [™] i3 processors or single channel memory
DISPLAY¹	14" 16:9 HD (1366 x 768), TN, Non-Touch, Anti-Glare, 220 nit, NTSC 45% 14" 16:9 FHD (1920 x 1080), WVA/IPS, Non-Touch, Anti-Glare, 250 nit, NTSC 45% 14" 16:9 FHD (1920 x 1080), WVA/IPS, Touch, Anti-Glare, 300 nit, NTSC 72%	14" 16:9 HD (1366 x 768), TN, Non-Touch, Anti-Glare, 220 nit, NTSC 45% 14" 16:9 FHD (1920 x 1080), WVA/IPS, Non-Touch, Anti-Glare, 250 nit, NTSC 45% 14" 16:9 FHD (1920 x 1080), WVA/IPS, Touch, Anti-Glare, 300 nit, NTSC 72%	14" 16:9 HD (1366 x 768), TN, Non-Touch, Anti-Glare, 220 nit, NTSC 45% 14" 16:9 FHD (1920 x 1080), WVA/IPS, Non-Touch, Anti-Glare, 250 nit, NTSC 45% 14" 16:9 FHD (1920 x 1080), WVA/IPS, Touch, Anti-Glare, 300 nit, NTSC 72%
STORAGE OPTIONS^{1,3}	Up to 512 GB, M.2 2230, PCIe NVMe, SSD, Class 35 Up to 512 GB, M.2 2280, PCIe NVMe, SSD, Class	Up to 1 TB, M.2 2230, PCIe NVMe, SSD, Class 35 Up to 1 TB, M.2 2280, PCIe NVMe, SSD, Class 40	Up to 512 GB, M.2 2230, PCIe NVMe, SSD, Class 35 Up to 512 GB, M.2 2280, PCIe NVMe, SSD, Class 40
SECURITY¹	TPM 2.0 FIPS-140-2 Certified / TCG Certified Camera Shutter Chassis Intrusion Detection	TPM 2.0 FIPS-140-2 Certified / TCG Certified Camera Shutter Chassis Intrusion Detection	TPM 2.0 FIPS-140-2 Certified / TCG Certified Camera Shutter Chassis Intrusion Detection
DOCKING¹	Docks are optional, sold separately) Dell USB-C Dock - WD19S	Docks are optional, sold separately) Dell Thunderbolt™ Dock - WD22TB4 Dell Performance Dock - WD19DCS Dell USB-C Dock - WD19S Dell Universal Dock - UD22 Dell Dual Charge Dock - HD22Q	Docks are optional, sold separately) Dell USB-C Dock - WD19S
MULTIMEDIA¹	FHD+IR Camera + Camera Shutter FHD RGB Camera + Camera Shutter HD RGB Camera + Camera Shutter 2 x Speakers, 2 x Noise Canceling Microphones Universal Audio Jack	FHD+IR Camera + Camera Shutter FHD RGB Camera + Camera Shutter HD RGB Camera + Camera Shutter 2 x Speakers, 2 x Noise Canceling Microphones Universal Audio Jack	FHD+IR Camera + Camera Shutter FHD RGB Camera + Camera Shutter HD RGB Camera + Camera Shutter 2 x Speakers, 2 x Noise Canceling Microphones Universal Audio Jack
PORTS, SLOTS & CHASSIS¹	1x USB Type-C 3.2 Gen2 with Power Delivery & DisplayPort 1.4 3x USB 3.2 Gen1 (1x with PowerShare) 1x HDMI 1.4 1x RJ-45 Ethernet port 1x Universal Audio Jack 1x barrel power adapter port Wedge Shaped Lock Slot	1x USB Type-C 3.2 Gen2 with Power Delivery & DisplayPort 1.4 3x USB 3.2 Gen1 (1x with PowerShare) 1x HDMI 1.4 1x RJ-45 Ethernet port 1x Universal Audio Jack 1x barrel power adapter port Wedge Shaped Lock Slot	1x USB Type-C 3.2 Gen2 with Power Delivery & DisplayPort 1.4 3x USB 3.2 Gen1 (1x with PowerShare) 1x HDMI 1.4 1x RJ-45 Ethernet port 1x Universal Audio Jack 1x barrel power adapter port Wedge Shaped Lock Slot
TOUCHPAD	Precision Clickpad with multi-touch gesture support	Precision Clickpad with multi-touch gesture support	Precision Clickpad with multi-touch gesture support
INPUT¹	Optional 10-Finger Touch Display Spill Resistant Non-Backlit Keyboard Spill Resistant Backlit Keyboard	Optional 10-Finger Touch Display Spill Resistant Non-Backlit Keyboard Spill Resistant Backlit Keyboard	Optional 10-Finger Touch Display Spill Resistant Non-Backlit Keyboard Spill Resistant Backlit Keyboard
CONNECTIVITY OPTIONS¹	Wireless LAN Options ⁷ : Intel [®] Wi-Fi 6E (6GHz) AX211, 2x2, Bluetooth 5.3	Wireless LAN Options ⁷ : Realtek Wi-Fi 6 RTL8852BE, 2x2, Bluetooth 5.3 Intel [®] Wi-Fi 6E (6GHz) AX211, 2x2, Bluetooth 5.3	Wireless LAN Options ⁷ : Realtek Wi-Fi 6 RTL8852BE, 2x2, Bluetooth 5.3 Intel [®] Wi-Fi 6E (6GHz) AX211, 2x2, Bluetooth 5.3

3440 Thin client solution with Dell Cloud Client Workspace

FEATURE TECHNICAL SPECIFICATION

THIN CLIENT SOLUTION ¹⁷	Latitude 3440 with Dell ThinOS	Latitude 3440 with Dell Hybrid Client	Latitude 3440 with Windows 10 IoT Enterprise LTSC 2021
THIN CLIENT MANAGEMENT¹	Wyse Management Suite Pro edition, version 4.1 (or above) is required for comprehensive management and hybrid cloud deployment (sold separately)	Wyse Management Suite Pro edition, version 4.1 (or above) is required for comprehensive management and hybrid cloud deployment (sold separately)	Wyse Management Suite Pro edition, version 4.1 (or above) is required for comprehensive management and hybrid cloud deployment (sold separately)
PERIPHERAL ECOSYSTEM¹	Powerful accessories designed and tested for Latitude 3440 enable seamless productivity to work from anywhere.	Powerful accessories designed and tested for Latitude 3440 enable seamless productivity to work from anywhere.	Powerful accessories designed and tested for Latitude 3440 enable seamless productivity to work from anywhere.
BATTERY OPTIONS^{1,5}	3-cell, 42 Wh, Li-ion 3-cell, 54 Wh, Li-ion	3-cell, 42 Wh, Li-ion 3-cell, 54 Wh, Li-ion	3-cell, 42 Wh, Li-ion 3-cell, 54 Wh, Li-ion
POWER OPTIONS¹	65W adapter, Type-C 65W adapter, 4.5mm barrel 60W adapter, Type-C, Ultralight Mini Adapter (Japan only)	65W adapter, Type-C 65W adapter, 4.5mm barrel 60W adapter, Type-C, Ultralight Mini Adapter (Japan only)	65W adapter, Type-C 65W adapter, 4.5mm barrel 60W adapter, Type-C, Ultralight Mini Adapter (Japan only)
DIMENSIONS & WEIGHT^{1,3}	Width: 322.2mm / 12.7in Depth: 219.4mm / 8.6in Height (front): 17.7mm / 0.70in Height (rear): 19.4mm / 0.76in Screen to Body Ratio: 84.5% Starting weight: 1.54kg / 3.40lbs	Width: 322.2mm / 12.7in Depth: 219.4mm / 8.6in Height (front): 17.7mm / 0.70in Height (rear): 19.4mm / 0.76in Screen to Body Ratio: 84.5% Starting weight: 1.54kg / 3.40lbs	Width: 322.2mm / 12.7in Depth: 219.4mm / 8.6in Height (front): 17.7mm / 0.70in Height (rear): 19.4mm / 0.76in Screen to Body Ratio: 84.5% Starting weight: 1.54kg / 3.40lbs
WARRANTY AND SERVICE¹	Limited Hardware Warranty ⁴ , Standard 1 year Mail-in Service after Remote Diagnosis ¹⁰ , optional 3-, 4- and 5-year hardware warranty extensions, and 3-5 year Dell ProSupport contracts available ¹¹	Limited Hardware Warranty ⁴ , Standard 1 year Mail-in Service after Remote Diagnosis ¹⁰ , optional 3-, 4- and 5-year hardware warranty extensions, and 3-5 year Dell ProSupport contracts available ¹¹	Limited Hardware Warranty ⁴ , Standard 1 year Mail-in Service after Remote Diagnosis ¹⁰ , optional 3-, 4- and 5-year hardware warranty extensions, and 3-5 year Dell ProSupport contracts available ¹¹
REGULATORY AND ENVIRONMENTAL COMPLIANCE¹	Regulatory Model: P169G; Regulatory Type: P169G001 ENERGY STAR EPEAT Registered. For specific country participation and rating, please see www.epeat.net TCO compliant configurations available Halogen-Free/ Arsenic-Free BFR/PVC free ⁸	Regulatory Model: P169G; Regulatory Type: P169G001 ENERGY STAR EPEAT Registered. For specific country participation and rating, please see www.epeat.net TCO compliant configurations available Halogen-Free/ Arsenic-Free BFR/PVC free ⁸	Regulatory Model: P169G; Regulatory Type: P169G001 ENERGY STAR EPEAT Registered. For specific country participation and rating, please see www.epeat.net TCO compliant configurations available Halogen-Free/ Arsenic-Free BFR/PVC free ⁸
SUSTAINABILITY	30% PCR plastic in palmrest 50% PCR plastic in LCD bezel 50% PCR plastic in bottom cover 50% PCR plastic in battery frame 50% PCR plastic in 65W Type-C adapter 30% PCR plastic in 60W Type-C adapter (Japan only) Packaging made from 100% recycled or renewable materials	30% PCR plastic in palmrest 50% PCR plastic in LCD bezel 50% PCR plastic in bottom cover 50% PCR plastic in battery frame 50% PCR plastic in 65W Type-C adapter 30% PCR plastic in 60W Type-C adapter (Japan only) Packaging made from 100% recycled or renewable materials	30% PCR plastic in palmrest 50% PCR plastic in LCD bezel 50% PCR plastic in bottom cover 50% PCR plastic in battery frame 50% PCR plastic in 65W Type-C adapter 30% PCR plastic in 60W Type-C adapter (Japan only) Packaging made from 100% recycled or renewable materials

Product Disclosures:

1. Offering may vary by country and by configuration and operating system. Some items may be available after product introduction. For complete details, refer to the Setup and Specifications published on www.dell.com/support. At launch, Dell Hybrid Client (v2.0 or above) is a customer install option sold separately and requires the device to be configured with 8 GB Memory, 128 GB or higher capacity SSD/HDD and Ubuntu Linux 22.04 with Dell Client Agent Enabler (DCA-Enabler).
2. System with single channel memory is shown as Intel UHD graphics. System with dual channel memory is shown as Intel Iris Xe Graphics.
3. GB means 1 billion bytes and TB equals 1 trillion bytes; actual capacity varies with preloaded material and operating environment and will be less.
4. Limited Hardware Warranty: For copy of Limited Hardware Warranty, write Dell USA LP, Attn: Warranties, One Dell Way, Round Rock, TX 78682 or see www.dell.com/warranty.
5. The stated Watt Hour (Whr) is not an indication of battery life.
6. Intel Rapid Storage Technology requires a HDD, mSATA, or an SSD, as primary storage device and Windows OS required
7. Wireless module available only at time of system purchase. Wi-Fi6e (supporting 6GHz spectrum) requires Windows 11 Operating system and compatible router. Router requires a separate purchase. Wi-Fi 6E connectivity is only available in selected locations. Check availability with your service provider.
8. Dell Latitude 3340, 3440, 3540 are brominated flame retardant free (BFR-free) and polyvinyl chloride free (PVC-free); meeting the definition of BFR-/PVC-free as set forth in the INEMI Position Statement on the 'Definition of Low-Halogen Electronics (BFR-/CFR-/PVC-free)'. Plastic parts contain less than 1,000 ppm (0.1%) of bromine (if the Br source is from BFRs) and less than 1,000 ppm (0.1%) of chlorine (if the Cl source is from CFRs or PVC or PVC copolymers). All printed circuit board (PCB) and substrate laminates contain bromine/chlorine total less than 1,500 ppm (0.15%) with a maximum chlorine of 900 ppm (0.09%) and maximum bromine being 900 ppm (0.09%).
9. Mobile Broadband antenna and module available only at time of system purchase. Mobile Broadband subject to service provider's broadband subscription and coverage area; additional charges apply. eSim technology subject to regional carrier/service provider availability & service provider's data plan subscription; additional charges apply. Check availability with your service provider.
10. Mail-in Service after Remote Diagnosis: Remote Diagnosis is determination by online/phone technician of cause of issue; may involve customer access to inside of system and multiple or extended sessions. If issue is covered by Limited Hardware Warranty (www.dell.com/warranty) and not resolved remotely, technician and/or part will be dispatched, usually within 1 business day following completion of Remote Diagnosis. Availability varies. Other conditions apply.
11. Dell Services: Availability and terms of Dell Services vary by region. For more information, visit www.dell.com/servicesdescriptions.
12. GB means 1 billion bytes and TB equals 1 trillion bytes; significant system memory may be used to support graphics, depending on system memory size and other factors.
13. Weights vary depending on configuration and manufacturing variability.
14. Based on Dell Internal Analysis, November 2022.
15. Based on Dell analysis comparing against competitive personal conferencing speakerphones, September 2021.
16. Based on Dell internal analysis, February 2019.
17. Based on Dell internal analysis of competitive products using publicly available data as of February 2019. Power Delivery of up to 130W when used with compatible Dell systems. ExpressCharge Boost is available on select Dell systems.
18. Based on Dell analysis, October 2022. Dell Optimizer not available in OptiPlex 3000 series, Latitude Chromebook Enterprise, and Linux-based devices. Feature availability and functionality may vary by model. For more details visit: <https://www.delltechnologies.com/asset/en-us/solutions/business-solutions/technical-support/dell-optimizer-features-availability-matrix.pdf.external>

Technical specifications subject to change without prior notice. Product availability varies by country. Please contact your Dell representative for more information.

© 2023 Dell Inc. or its subsidiaries. All Rights Reserved. Dell and other trademarks are trademarks of Dell Inc. or its subsidiaries. Other trademarks may be trademarks of their respective owners. USB Type-C® and USB-C® are registered trademarks of USB Implementers Forum.