

Wireless Speaker  
SRS-XB01



The following explains how to use this speaker. Select a topic from the navigation pane.

## Getting started

### [Parts and controls](#)

#### Included items

- [Attaching the strap to the speaker](#)

#### Power source/charging

- [Charging the speaker](#)
- [Turning the power on](#)
- [Turning the power off](#)
- [Auto power off function](#)

## Making connections

### BLUETOOTH

- [Pairing and connecting with BLUETOOTH® devices](#)

[Connecting with a computer via a BLUETOOTH connection \(Windows\)](#)

---

[Connecting with a computer via a BLUETOOTH connection \(Mac\)](#)

---

## Listening to music

### BLUETOOTH device

[Listening to music of a device via BLUETOOTH connection](#)

---

[Terminating the BLUETOOTH connection \(After use\)](#)

---

[Listening to music of a portable audio device, etc.](#)

---

## Phone calls

[Receiving a call](#)

---

[Making a call](#)

---

## Information

[About the indicators](#)

---

### Notes on use

[Precautions](#)

---

[Notes on charging](#)

---

[Notes on water resistant feature](#)

---

[How to care for the speaker](#)

---

[About the BLUETOOTH wireless technology](#)

---

[Trademarks](#)

---

[Notes on software](#)

---

## Troubleshooting

[What can I do to solve a problem?](#)

---

### Power supply

[Unable to charge the speaker](#)

---

[The built-in battery life is short](#)

---

[Unable to turn on the speaker or the speaker suddenly turns off](#)

---

### Sound

[No sound/Distorted sound/Humming or noise in the speaker output/No voice from callers](#)

---

[Sound becomes low while in use](#)

---

## BLUETOOTH

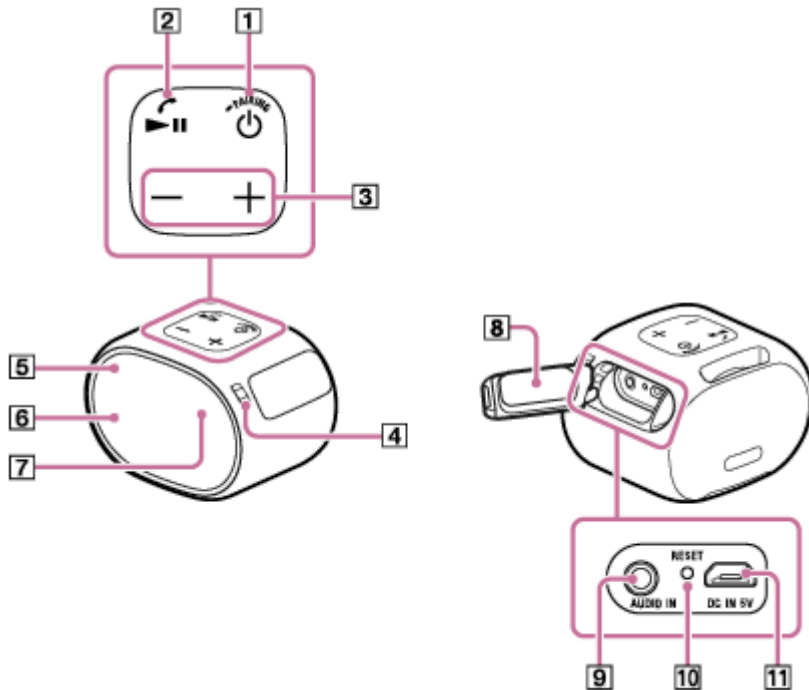
- └ [Unable to pair the speaker with a BLUETOOTH device](#)
- 

## Reset

- └ [Using the RESET button](#)
- └ [Initializing the speaker](#)

## Parts and controls

---



1. (power)/ PAIRING button
2. (play)/ (call) button
3. -/+ (volume) buttons
4. Strap hole
5. Power/BLUETOOTH indicator (blue)
6. Microphone
7. Charge indicator (orange)
8. Cap
9. AUDIO IN jack
10. RESET button
11. DC IN 5V jack\*

\* To charge the speaker, connect a USB AC adaptor to this jack.

---

### Related Topic

- [About the indicators](#)
- [Attaching the strap to the speaker](#)



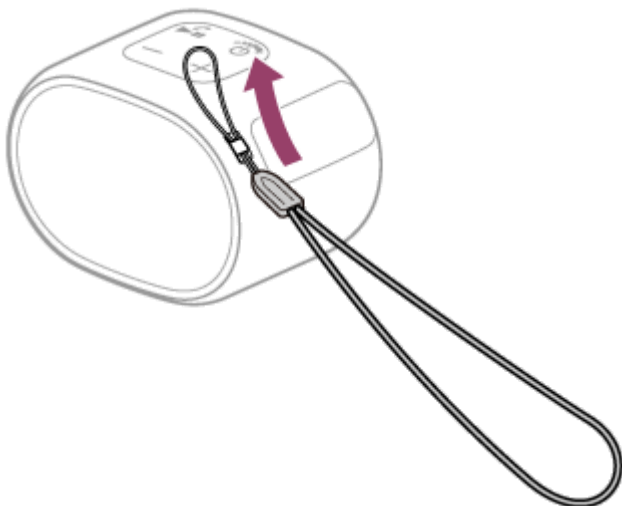
Wireless Speaker  
SRS-XB01

## Attaching the strap to the speaker

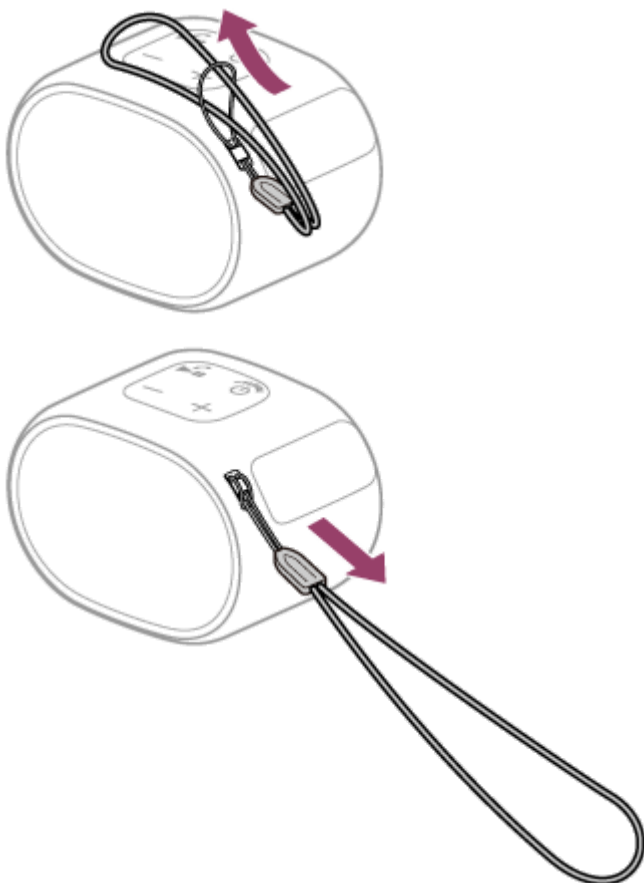
---

Attaching the supplied strap to the speaker make it easy to carry around.

- 1 Thread the string through the strap hole on the speaker.



- 2 Thread the other end of the strap through the string, then pull it to secure.



**Note**

- Do not swing the speaker around with the strap.
- Do not pull the strap forcefully once it has been attached to the speaker.
- The supplied strap is exclusively designed for use with the speaker. Do not use the strap with other devices, otherwise the strap may be damaged.

4-742-784-11(1) Copyright 2018 Sony Corporation

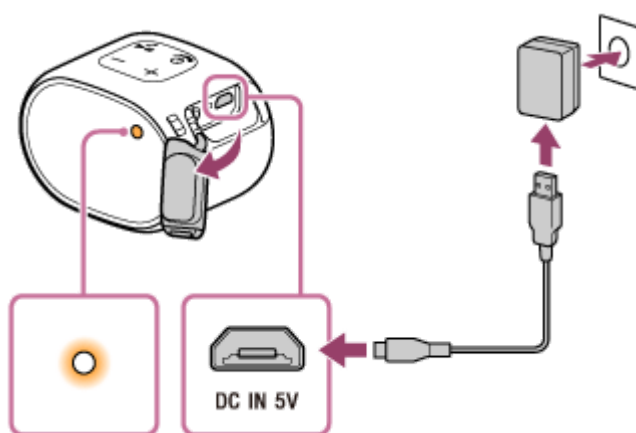
## Charging the speaker

The speaker can be operated by connecting it to an AC outlet via the USB AC adaptor (commercially available) or by using the built-in battery.

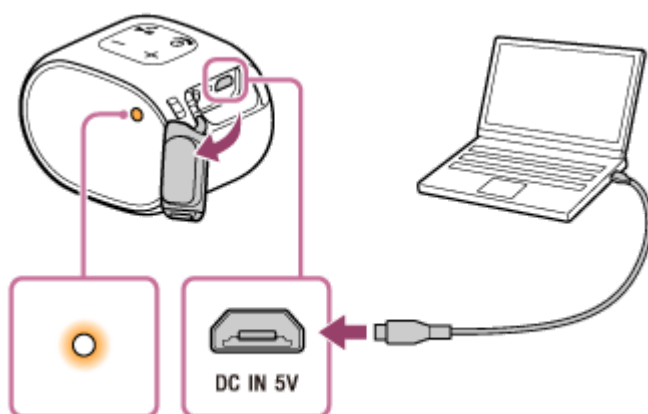
When you find the charge indicator flashing, charge the battery. By charging the battery after the indicator starts flashing, you can use the battery longer.

### 1 Connect the speaker to an AC outlet or a booted computer to charge it.

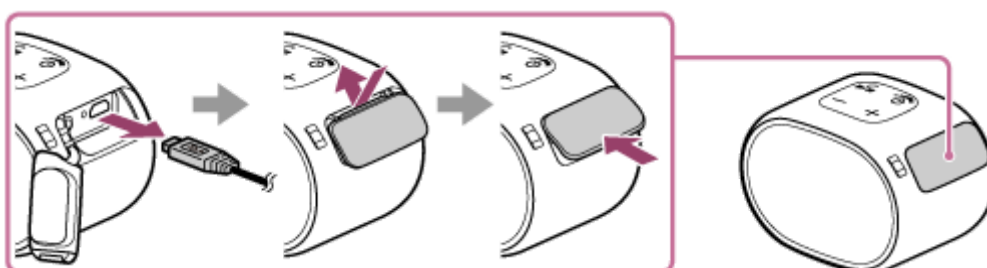
- When charging from an AC outlet  
Connect the micro-USB cable (supplied) to the speaker, connect the other end to a USB AC adaptor (not supplied), then plug the USB AC adaptor to an AC outlet.



- When charging from a booted computer  
Connect the micro-USB cable (supplied) to the speaker, then connect the other end to a booted computer.



When charging is complete, close the cap securely as shown below. Placing the top side of the cap in first will allow it to close easily.





The charge indicator lights up in orange while charging. Charging is completed in about 3 hours\* and the indicator turns off.

Connect the micro-USB cable (supplied) to the DC IN 5V jack on the speaker, and then connect the other end to a USB AC adaptor (commercially available). After that, plug the USB AC adaptor into an AC outlet.

The speaker supports a USB AC adaptor (commercially available) with an output current of 500 mA or more.

However, using a supplied micro-USB cable or micro-USB cable conforming to the USB standard is recommended. Charging from the other device is not guaranteed.

\* Time that is required to charge the empty battery to its full capacity when the speaker turns off.

## Checking the charging completion

If the built-in battery is fully charged when you connect the speaker to an AC outlet, the charge indicator lights up in orange then turns off after about 1 minute.

## Built-in battery life (using BLUETOOTH connection)

- About 6 hours  
The volume level of the speaker is set to 26.
- About 3 hours  
The volume level of the speaker is set to maximum (31).

The built-in battery life above is measured using the specified music source.

The built-in battery life varies depending on the content to be played, ambient temperature or conditions of use.

## When the built-in battery is running low

When the charge indicator flashes slowly in orange, the battery is running low and needs to be charged.

### Hint

- You can also charge the speaker by connecting it to a booted computer via the micro-USB cable. However, operation with all computers is not guaranteed. Operation with a home-built computer is also not covered by the warranty.
- The built-in battery can be charged if the speaker is connected to an AC outlet via a USB AC adaptor (commercially available), or if connected to a booted computer even while the speaker is in use. In this case, it may take longer to charge the built-in battery compared to when the speaker is turned off depending on the conditions of use. Therefore, it is recommended to turn off the speaker when charging.

### Note

- When you use the speaker at a loud volume, the built-in battery may run low even if the speaker is connected to an AC outlet. If you want to use the speaker while charging, lower the volume of the speaker. Otherwise, turn off the speaker and charge the built-in battery sufficiently.
- When you use the speaker at a loud volume for a long time, the built-in battery may run low even if the speaker is connected to an AC outlet. As a result, sound becomes low. This is not a malfunction. Turn off the speaker and charge the built-in battery sufficiently.
- The maximum power output will be lower when the built-in battery is running low.
- In an extremely cold or hot environment, charging stops for safety. If charging takes a long time, it also makes charging of the speaker stop. To resolve these issues, disconnect the micro-USB cable, and then connect it again within an operating temperature between 5 °C and 35 °C (41 °F and 95 °F).
- Do not charge in places where water may splash on the speaker.
- Even if you do not intend to use the speaker for a long time, charge the built-in battery to its full capacity once every 6 months to maintain its performance.

---

---

## Related Topic

- [Turning the power on](#)
- [Notes on charging](#)
- [The built-in battery life is short](#)

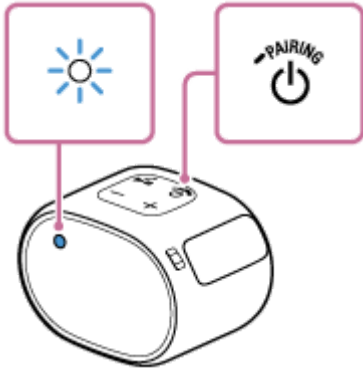
4-742-784-11(1) Copyright 2018 Sony Corporation

## Turning the power on

### 1 Press the (power)/ PAIRING button.

The power/BLUETOOTH indicator flashes slowly in blue.

When you turn on the speaker for the first time after purchase or there is no pairing information stored in the speaker, the power/BLUETOOTH indicator will begin to flash quickly in blue.



### Note

- If the charge indicator and power/BLUETOOTH indicator flash 3 times and turn off when you turn on the speaker, the built-in battery is empty. In this state, the speaker turns off automatically. Charge the built-in battery.
- When the charge indicator flashes slowly, the built-in battery is running low and needs to be charged.

### Related Topic

- [Turning the power off](#)
- [Charging the speaker](#)

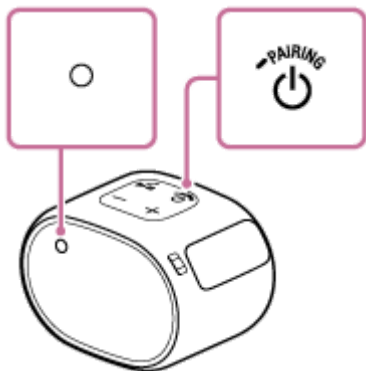
Wireless Speaker  
SRS-XB01

## Turning the power off

---

- 1 Press the  (power)/  PAIRING button.

The power/BLUETOOTH indicator turns off.



---

### Related Topic

- [Auto power off function](#)

Wireless Speaker  
SRS-XB01

## Auto power off function

---

If the speaker is not connected to a BLUETOOTH device via a BLUETOOTH connection and an audio cable is not connected to the speaker's AUDIO IN jack for 15 minutes, the speaker turns off automatically.

**Note**

- When the speaker is connected to a BLUETOOTH device via a BLUETOOTH connection or an audio cable is connected to the speaker's AUDIO IN jack, the auto power off function is disabled.

Wireless Speaker  
SRS-XB01

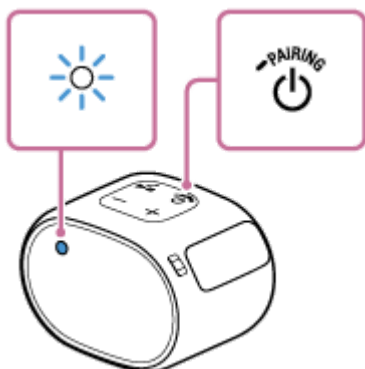
## Pairing and connecting with BLUETOOTH® devices



To pair with a second or subsequent BLUETOOTH device, perform the following pairing procedure for each device. Before operating the speaker, be sure to do the following:

- Place the BLUETOOTH device within 1 m (3 ft) of the speaker.
- Connect the speaker to an AC outlet via a USB AC adaptor (commercially available), or connect it to a booted computer. Or, charge the built-in battery sufficiently.
- Stop playback on a BLUETOOTH device.
- Turn down the volume of the BLUETOOTH device and speaker to avoid any sudden loud sound output from the speaker. Depending on the BLUETOOTH device, the volume of the device may be synchronized with the speaker.
- Prepare the operating instructions supplied with the BLUETOOTH device for reference.

### 1 Turn on the speaker.

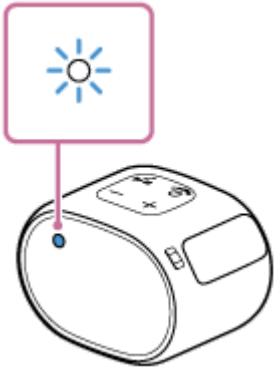
The power/BLUETOOTH indicator flashes slowly in blue.



- When you turn on the speaker for the first time after purchase, the power/BLUETOOTH indicator will begin to flash quickly, and the speaker enters pairing mode automatically by just pressing the  (power)/  button. Proceed to step **3**.
- When you turn on the speaker, the speaker tries to make a BLUETOOTH connection with the last connected BLUETOOTH device. If the device is nearby and its BLUETOOTH function is on, the BLUETOOTH connection is established automatically and the power/BLUETOOTH indicator stays lit. In this case, turn off the BLUETOOTH function or turn off the power of the currently connected BLUETOOTH device.

### 2 Press and hold the (power)/ button until you hear beeps and the power/BLUETOOTH indicator begins to flash quickly in blue.

The speaker enters pairing mode.



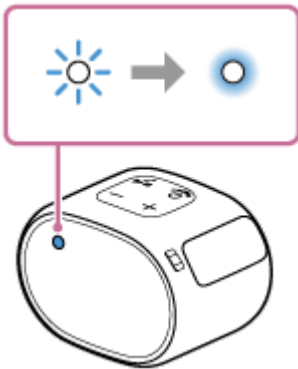
**3 Perform the pairing procedure on the BLUETOOTH device to detect the speaker.**

When a list of detected devices appears on the display of the BLUETOOTH device, select “SRS-XB01.”  
If a passkey\* is required on the display of the BLUETOOTH device, enter “0000.”

\* The passkey may be called a “passcode,” “PIN code,” “PIN number,” or “password.”


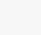
**4 Make the BLUETOOTH connection from the BLUETOOTH device.**

When the BLUETOOTH connection is established, the power/BLUETOOTH indicator switches from flashing to a steady state.



If the BLUETOOTH connection is not established, repeat from step 2 .

**Hint**

- Once the BLUETOOTH function is activated on the BLUETOOTH device which has been connected to the speaker via a BLUETOOTH connection, the BLUETOOTH device is connected to the speaker again by just pressing the  (power)/  PAIRING button.
- For details on operating a BLUETOOTH device, refer to the operating instructions supplied with the BLUETOOTH device.

**Note**

- The pairing mode of the speaker is released after about 1 minute and the power/BLUETOOTH indicator flashes slowly. However, when pairing information is not stored in the speaker, such as at the factory settings, the pairing mode is not released. If the pairing mode is released before finishing the process, repeat from step 2 .
- The passkey of the speaker is “0000.” If a passkey besides “0000” is set on the BLUETOOTH device, pairing cannot be done with the speaker.
- Once the BLUETOOTH devices are paired, there is no need to pair them again, except in the following cases:
  - Pairing information has been deleted after repair, etc.
  - The speaker is already paired with 8 devices and another device is to be paired.

The speaker can be paired with up to 8 devices. If a new device is paired after 8 devices have already been paired, the device that was paired earliest is replaced by the new one.

– The pairing information of the speaker has been deleted from the BLUETOOTH device.

– The speaker is initialized.

All pairing information will be deleted. If you initialize the speaker, it may not be able to connect your iPhone/iPod touch or computer. In this case, erase the pairing information of the speaker on your iPhone/iPod touch or computer, and then perform the pairing procedure again.

- The speaker can be paired with multiple devices, but can only play music from one paired device at a time.
- When an audio cable is connected to the speaker's AUDIO IN jack while the speaker and the BLUETOOTH device have been connected via BLUETOOTH connection, sound from the BLUETOOTH device is not output from the speaker (the hands-free function is available). To listen to music from the BLUETOOTH device, disconnect the audio cable from the speaker's AUDIO IN jack.

---

---

### Related Topic

- [Listening to music of a device via BLUETOOTH connection](#)
- [Terminating the BLUETOOTH connection \(After use\)](#)



## Connecting with a computer via a BLUETOOTH connection (Windows)

Pairing is the process required to mutually register the information on BLUETOOTH devices to be connected wirelessly. It is necessary to pair a device with the speaker to be able to make a BLUETOOTH connection for the first time. Perform the same procedures to pair to other devices.

### Supported operation systems

Windows 10, Windows 8.1, Windows 8, Windows 7 SP1

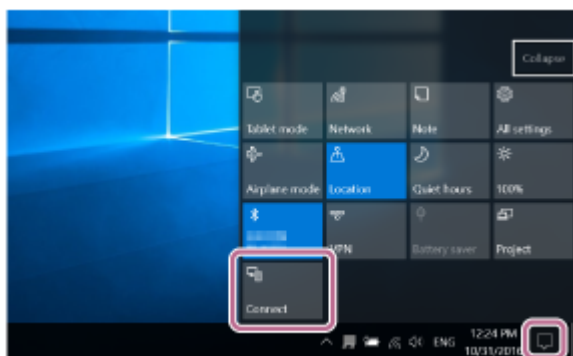
Do the following before starting.

- Place your computer within 1 m (3 ft) of the speaker.
- Connect the speaker to an AC outlet via a USB AC adaptor (commercially available), or connect it to a booted computer. Or, charge the built-in battery sufficiently.
- Prepare the operating instructions supplied with the computer for reference.
- Stop playback on the computer.
- Turn down the volume of the computer and speaker to avoid any sudden loud sound output from the speaker.

#### 1 Prepare to search for the speaker on the computer.

##### For Windows 10

Select [Action Center] – [Connect] in the taskbar on the right-bottom of the screen.



##### For Windows 8.1

Right-click on [Start], and then click [Control Panel].

When [All Control Panel Items] is displayed, select [Devices and Printers].

If the [Control Panel] screen appears instead of [All Control Panel Items], select [Large icons] or [Small icons] from the [View by] menu in the top right corner of the screen.

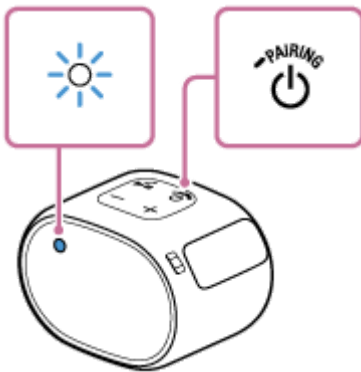
##### For Windows 7

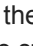
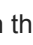
Click the [Start] button and then [Devices and Printers].



**2 Turn on the speaker.**

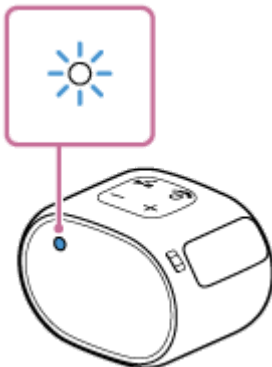
The power/BLUETOOTH indicator flashes slowly in blue.



- When you turn on the speaker for the first time after purchase, the power/BLUETOOTH indicator will begin to flash quickly, and the speaker enters pairing mode automatically by just pressing the  (power)/  PAIRING button. Proceed to step **4**.
- When you turn on the speaker, the speaker tries to make a BLUETOOTH connection with the last connected BLUETOOTH device. If the device is nearby and its BLUETOOTH function is on, the BLUETOOTH connection is established automatically and the power/BLUETOOTH indicator stays lit. In this case, turn off the BLUETOOTH function or turn off the power of the currently connected BLUETOOTH device.

**3 Press and hold the  (power)/  PAIRING button until you hear beeps and the power/BLUETOOTH indicator begins to flash quickly in blue.**

The speaker enters pairing mode.

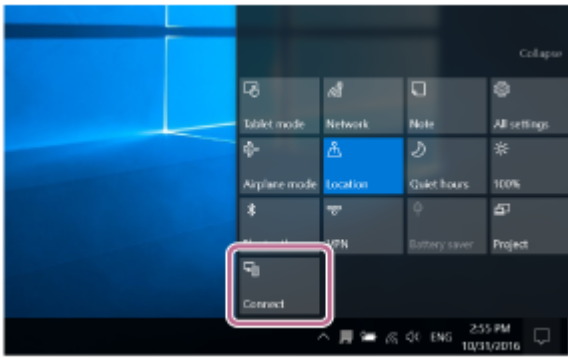


**4 Search for the speaker on the computer.**

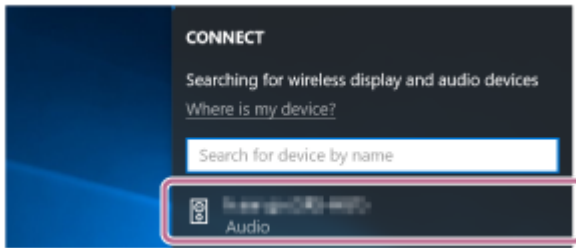
**Connecting the speaker to the computer via a BLUETOOTH connection**

**For Windows 10/Windows 8.1**

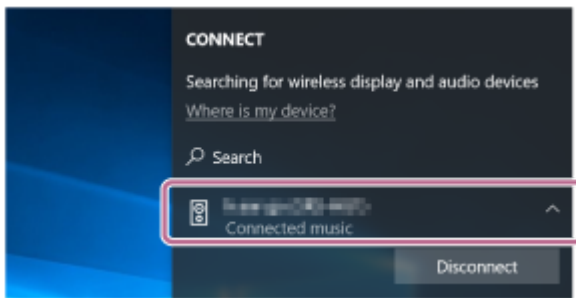
1. Select [Connect] in the Action Center on the right-bottom of the screen.



2. Select [SRS-XB01].

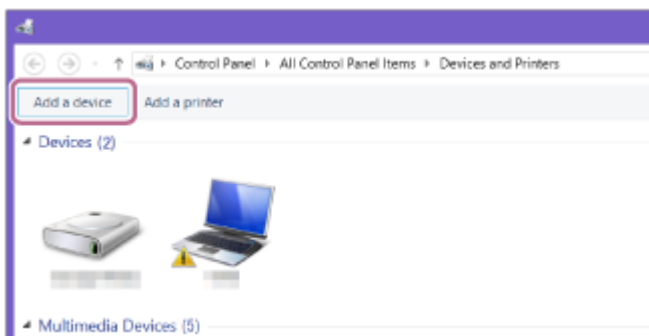


If [SRS-XB01] does not appear on the screen, repeat the procedure from step 3 .  
After pairing, the BLUETOOTH connection establishes automatically and [Connected music] will be displayed on the screen. Proceed to step 6 .

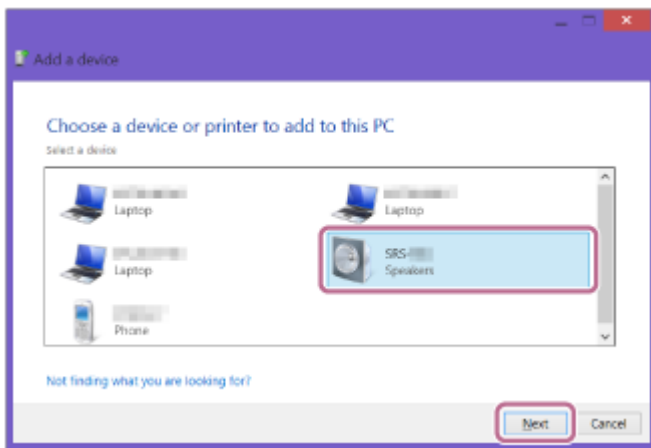


## For Windows 7

1. Click [Add a device].



2. Select [SRS-XB01] and click [Next].

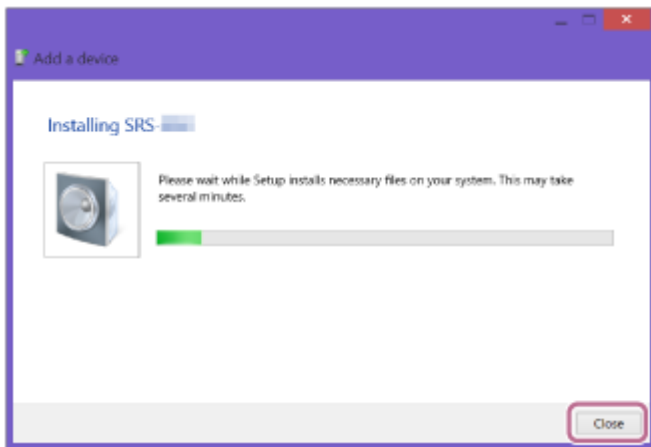


If a passkey\* is required, enter "0000."

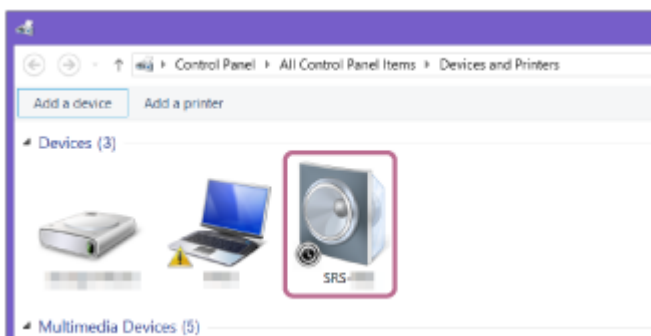
If [SRS-XB01] does not appear, perform the operation again from step 3.

\* The passkey may be called a "passcode," "PIN code," "PIN number," or "password."

3. When the following screen appears, click [Close].  
The computer begins installing the driver.



The "Ⓢ" mark will appear in the bottom left of the [SRS-XB01] icon during installation. When the "Ⓢ" mark disappears, driver installation is complete. Proceed to step 5.



Depending on the computer, installation may take time. If driver installation takes too much time, the auto power off function of the speaker will cause it to turn off automatically. If this happens, turn on the speaker again.

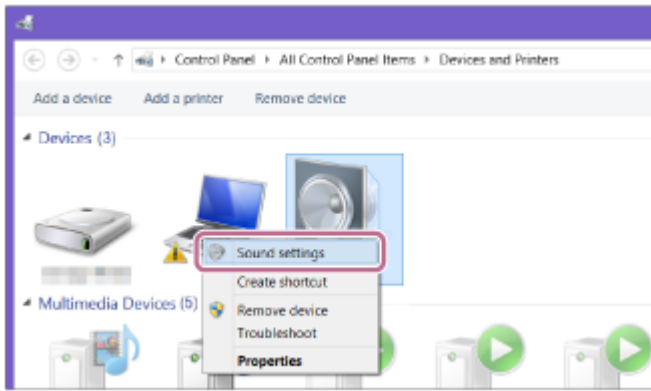
## 5 Register the speaker to the computer.

### For Windows 10

After pairing, the BLUETOOTH connection establishes automatically and [Connected music] will be displayed on the screen. Proceed to step 6.

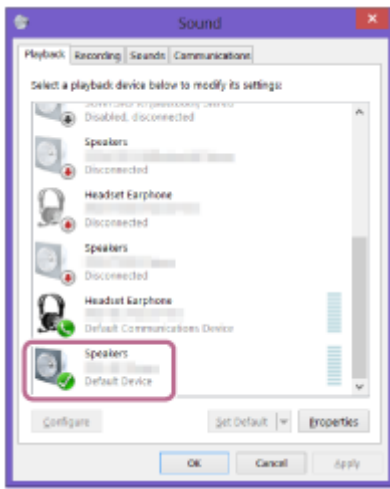
### For Windows 8.1

1. Right-click on [SRS-XB01] in [Devices] and select [Sound settings] from the menu that appears.

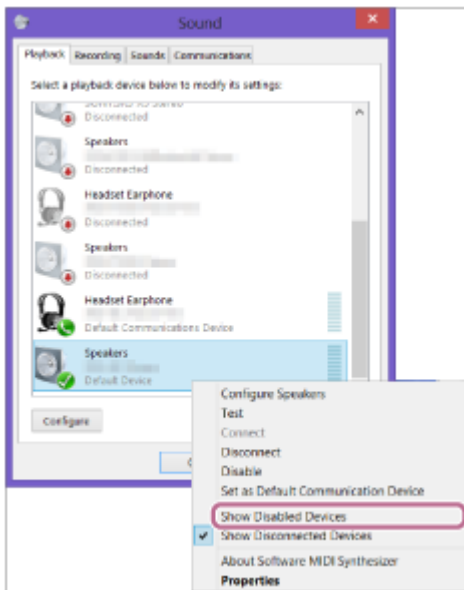


2. Confirm [SRS-XB01 Stereo] on the [Sound] screen.

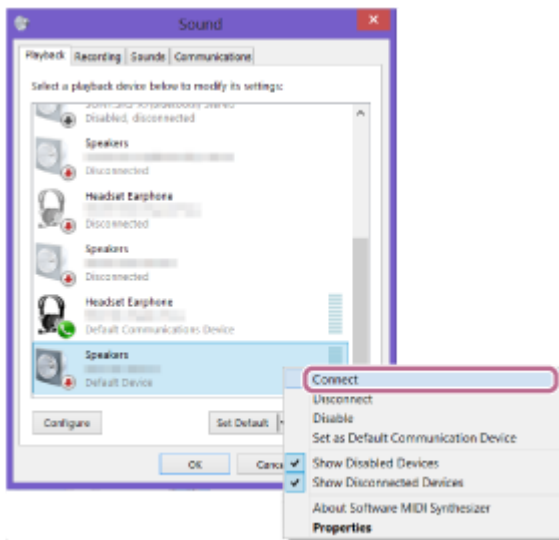
- If there is a checkmark (green) on [SRS-XB01 Stereo], proceed to step 6 .



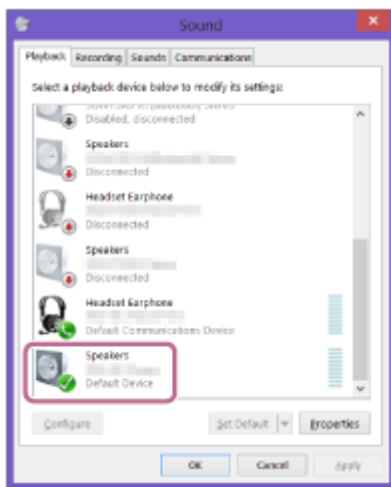
- If there is not a checkmark (green) on [SRS-XB01 Stereo], proceed to the next step (substep 3).
- If [SRS-XB01 Stereo] does not appear, right-click on the [Sound] screen, and select [Show Disabled Devices] from the menu that appears. Then proceed to the next step (substep 3).



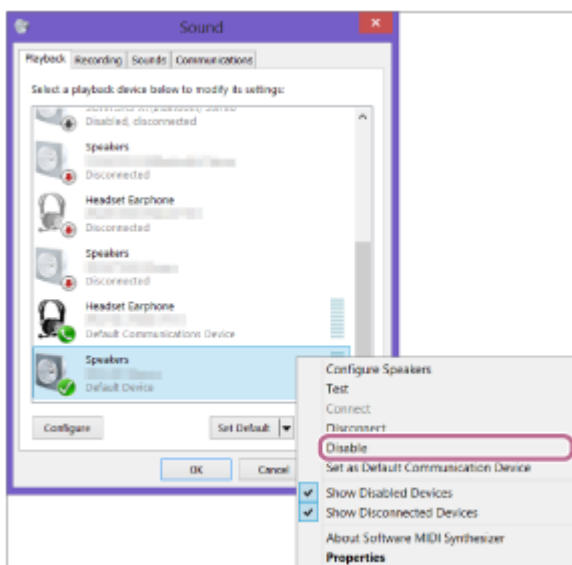
3. Right-click on [SRS-XB01 Stereo], and select [Connect] from the menu that appears.



When the speaker is connected, a checkmark will appear on [SRS-XB01 Stereo] on the [Sound] screen. Proceed to step 6 .

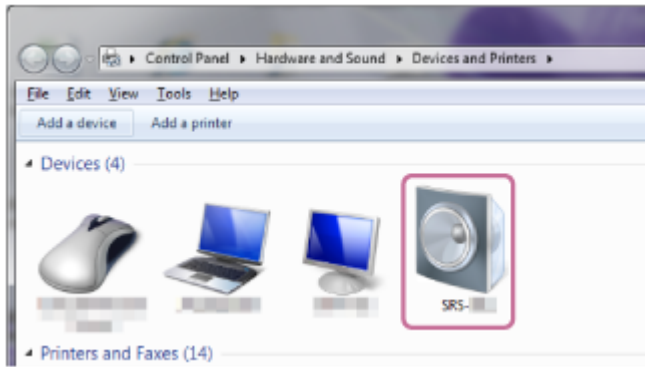


If you cannot click [Connect] for [SRS-XB01 Stereo], select [Disable] for the [Default Device] that currently has a checkmark (green).

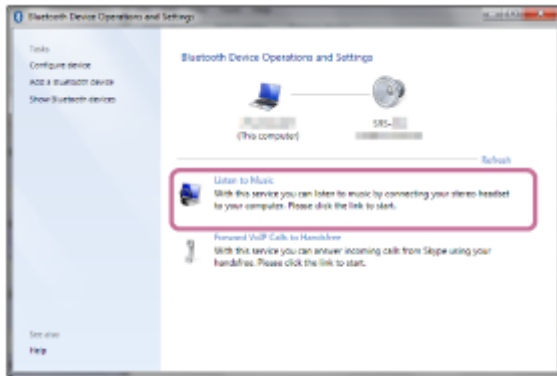


## For Windows 7

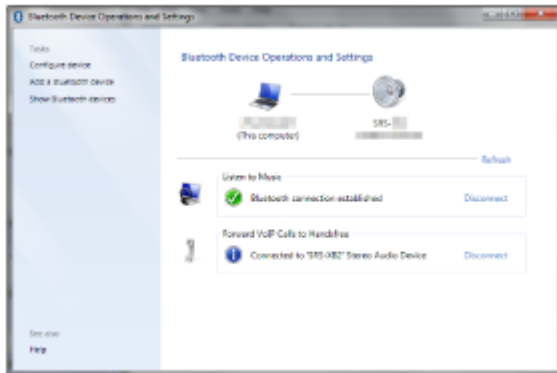
1. Double-click on [SRS-XB01] in [Devices].



2. Click [Listen to Music].

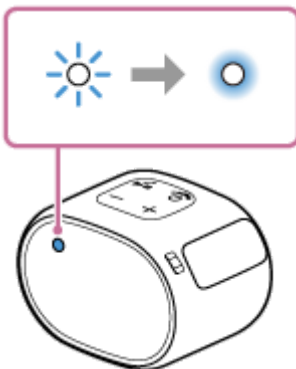


When the speaker is connected, a checkmark will appear.



6 Check that the power/BLUETOOTH indicator has switched from flashing to a steady light.

When the speaker is connected to the computer, the power/BLUETOOTH indicator stays lit. You can enjoy playing back music, etc. from your computer.



- The procedure explained above is for guidance only. For details, refer to the operating instructions supplied with the computer.

## Note

- The pairing mode of the speaker is released after about 1 minute and the power/BLUETOOTH indicator flashes slowly. However, when pairing information is not stored in the speaker, such as at the factory settings, the pairing mode is not released. If the pairing mode is released before finishing the process, repeat from step 3 .
- Once BLUETOOTH devices are paired, there is no need to pair them again, except in the following cases:
  - Pairing information has been deleted after repair, etc.
  - The speaker is already paired with 8 devices and another device is to be paired.  
The speaker can be paired with up to 8 devices. If a new device is paired after 8 devices have already been paired, the device that was paired earliest is replaced by the new one.
  - The pairing information with the speaker has been deleted from the BLUETOOTH device.
  - The speaker is initialized.  
All pairing information will be deleted. If you initialize the speaker, it may not be able to connect your iPhone/iPod touch or computer. In this case, erase the pairing information of the speaker on your iPhone/iPod touch or computer, and then perform the pairing procedure again.
- The speaker can be paired with multiple devices, but can only play music from one paired device at a time.
- The passkey of the speaker is “0000.” If a passkey besides “0000” is set on the BLUETOOTH device, pairing cannot be done with the speaker.
- When an audio cable is connected to the speaker’s AUDIO IN jack while the speaker and the BLUETOOTH device have been connected via BLUETOOTH connection, sound from the BLUETOOTH device is not output from the speaker (the hands-free function is available). To listen to music from the BLUETOOTH device, disconnect the audio cable from the speaker’s AUDIO IN jack.

---

## Related Topic

- [Listening to music of a device via BLUETOOTH connection](#)
- [Terminating the BLUETOOTH connection \(After use\)](#)




## Connecting with a computer via a BLUETOOTH connection (Mac)

Pairing is the process required to mutually register the information on BLUETOOTH devices to be connected wirelessly. It is necessary to pair a device with the speaker to be able to make a BLUETOOTH connection for the first time. Perform the same procedures to pair to other devices.

### Supported operation systems

macOS High Sierra (version 10.13)

Do the following before starting.

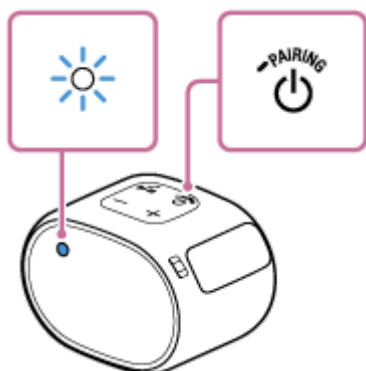
- Confirm that the BLUETOOTH wireless technology is installed in your computer.
- Place your computer within 1 m (3 ft) of the speaker.
- Connect the speaker to an AC outlet via a USB AC adaptor (commercially available), or connect it to a booted computer. Or, charge the built-in battery sufficiently.
- Prepare the operating instructions supplied with the computer for reference.
- Stop playback on the computer.
- Turn down the volume of the computer and speaker to avoid any sudden loud sound output from the speaker.
- Depending on your computer, turn on the built-in BLUETOOTH adaptor.  
If you do not know how to turn on the BLUETOOTH adaptor or whether your computer has the built-in BLUETOOTH adaptor, refer to the operating instructions of your computer.
- Set the speaker of your computer to on.  
If the speaker of your computer is set to  (Mute), sound does not output on the BLUETOOTH speaker.



– When the speaker of your computer is set to on:



### 1 Turn on the speaker.

The power/BLUETOOTH indicator flashes slowly in blue.



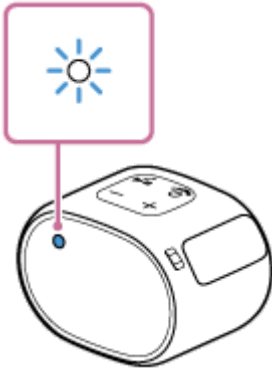
- When you turn on the speaker for the first time after purchase, the power/BLUETOOTH indicator will begin to flash quickly, and the speaker enters pairing mode automatically by just pressing the  (power)/ 

button. Proceed to step 3 .


- When you turn on the speaker, the speaker tries to make a BLUETOOTH connection with the last connected BLUETOOTH device. If the device is nearby and its BLUETOOTH function is on, the BLUETOOTH connection is established automatically and the power/BLUETOOTH indicator stays lit. In this case, turn off the BLUETOOTH function or turn off the power of the currently connected BLUETOOTH device.

**2 Press and hold the  (power)/  PAIRING button until you hear beeps and the power/BLUETOOTH indicator begins to flash quickly in blue.**

The speaker enters pairing mode.

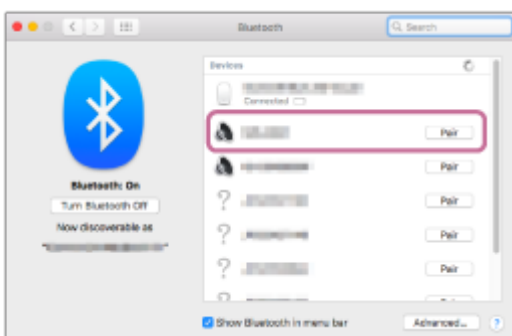


**3 Search for the speaker on the computer.**

1. Select [  (System Preferences)] - [Bluetooth] in the taskbar on the right-bottom of the screen.

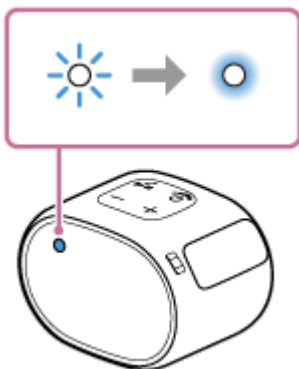


2. Select [SRS-XB01] from the Bluetooth screen, then click [Pair].



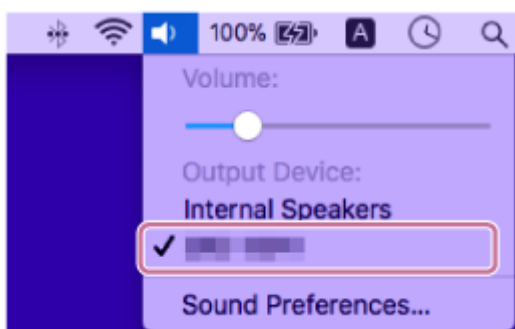
**4 Check that the power/BLUETOOTH indicator has switched from flashing to a steady light.**

When the speaker is connected to the computer, the power/BLUETOOTH indicator stays lit.



**5 Click the speaker icon in the top-right of the screen and select [SRS-XB01] from [Output Device].**

You can enjoy playing back music, etc. from your computer.



**Hint**

- The procedure explained above is for guidance only. For details, refer to the operating instructions supplied with the computer.

**Note**

- The pairing mode of the speaker is released after about 1 minute and the power/BLUETOOTH indicator flashes slowly. However, when pairing information is not stored in the speaker, such as at the factory settings, the pairing mode is not released. If the pairing mode is released before finishing the process, repeat from step 2 .
- Once BLUETOOTH devices are paired, there is no need to pair them again, except in the following cases:
  - Pairing information has been deleted after repair, etc.
  - The speaker is already paired with 8 devices and another device is to be paired.  
The speaker can be paired with up to 8 devices. If a new device is paired after 8 devices have already been paired, the device that was paired earliest is replaced by the new one.
  - The pairing information with the speaker has been deleted from the BLUETOOTH device.
  - The speaker is initialized.  
All pairing information will be deleted. If you initialize the speaker, it may not be able to connect your iPhone/iPod touch or computer. In this case, erase the pairing information of the speaker on your iPhone/iPod touch or computer, and then perform the pairing procedure again.
- The speaker can be paired with multiple devices, but can only play music from one paired device at a time.
- The passkey of the speaker is “0000.” If a passkey besides “0000” is set on the BLUETOOTH device, pairing cannot be done with the speaker.
- When an audio cable is connected to the speaker’s AUDIO IN jack while the speaker and the BLUETOOTH device have been connected via BLUETOOTH connection, sound from the BLUETOOTH device is not output from the speaker (the hands-free

function is available). To listen to music from the BLUETOOTH device, disconnect the audio cable from the speaker's AUDIO IN jack.

---

---

### Related Topic

- [Listening to music of a device via BLUETOOTH connection](#)
- [Terminating the BLUETOOTH connection \(After use\)](#)

4-742-784-11(1) Copyright 2018 Sony Corporation

Wireless Speaker  
SRS-XB01

## Listening to music of a device via BLUETOOTH connection

You can enjoy listening to music of a BLUETOOTH device and operate it by the speaker via BLUETOOTH connection if it supports the following BLUETOOTH profiles.

### A2DP (Advanced Audio Distribution Profile)

Enables you to enjoy high-quality audio contents wirelessly.

### AVRCP (Audio Video Remote Control Profile)

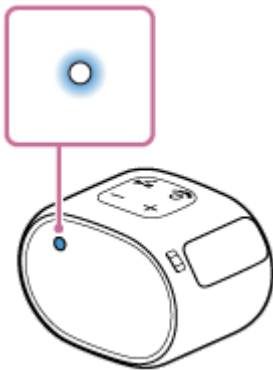
Enables you to adjust the volume and operate to play, pause or skip to the beginning of the next/current track. Operations may vary depending on the BLUETOOTH device. Refer also to the operating instructions supplied with the BLUETOOTH device.

#### Note

- Make sure beforehand that the volume on the BLUETOOTH device and speaker are set to a moderate level to avoid sudden loud sound output from the speaker.  
Depending on the BLUETOOTH device, adjusting the volume of the speaker may not be possible on the BLUETOOTH device while playback on the device is stopped/paused.

### 1 Connect the speaker with the BLUETOOTH device.

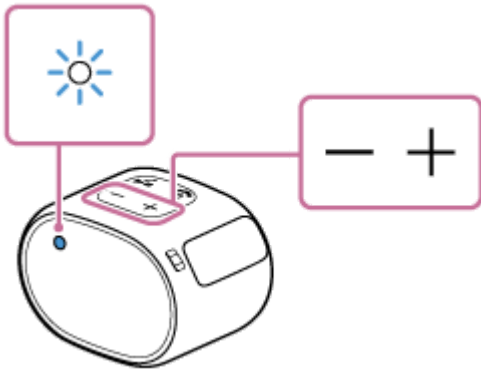
The power/BLUETOOTH indicator lights up in blue when the BLUETOOTH connection is established.



### 2 Start playback on the BLUETOOTH device.

### 3 Adjust the volume by pressing the -/+ (volume) buttons on the speaker or operating the BLUETOOTH device.

When you press the -/+ (volume) buttons on the speaker or adjust the volume on the BLUETOOTH device, the power/BLUETOOTH indicator flashes once or 3 times.



During playback, you can use the buttons on the speaker to perform the following operations.

### Pause

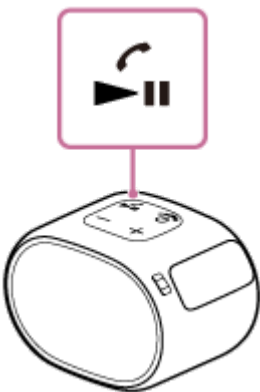
Press the ►|| (play)/ 📞 (call) button during playback to pause. Press it again to cancel pause.

### Skip to the beginning of the next track

Press the ►|| (play)/ 📞 (call) button twice quickly during playback.

### Skip to the beginning of the current track

Press the ►|| (play)/ 📞 (call) button 3 times quickly during playback.



### Hint

- The built-in battery can be charged if the speaker is connected to an AC outlet via a USB AC adaptor (commercially available), or if connected to a booted computer even while the speaker is in use.
- When you set the volume to the maximum (31) or minimum level on the speaker, the power/BLUETOOTH indicator flashes 3 times.

### Note

- If the communication condition is poor, the BLUETOOTH device may react incorrectly to the operations on the speaker.
- When you connect a portable audio device, etc., to the speaker's AUDIO IN jack while listening to music via BLUETOOTH connection, the speaker switches to the AUDIO IN mode automatically. In this case, music of the BLUETOOTH device is not output (if the BLUETOOTH connection is active, the hands-free function is available). To listen to music from the BLUETOOTH device again, disconnect the audio cable from the speaker's AUDIO IN jack.
- When using in a place with a high temperature, the volume may decrease to protect the built-in battery.
- If the built-in battery level is low, the maximum output of the speaker decreases.
- Depending on the BLUETOOTH device, it may be necessary to adjust the volume or set the audio output setting on the connected device.

- Noise or sound interruption may occur depending on the BLUETOOTH device connected with the speaker, the communication environment or the usage environment.

---

---

### Related Topic

- [Terminating the BLUETOOTH connection \(After use\)](#)

4-742-784-11(1) Copyright 2018 Sony Corporation

Wireless Speaker  
SRS-XB01

## Terminating the BLUETOOTH connection (After use)

---

When you finish playing music with the BLUETOOTH device, perform any of the following operations to terminate the BLUETOOTH connection.

- Turn off the BLUETOOTH function on the BLUETOOTH device. For details, refer to the operating instructions supplied with the device.
- Turn off the BLUETOOTH device.
- Turn off the speaker.

### Hint

- When you finish playing music, the BLUETOOTH connection may terminate automatically depending on the BLUETOOTH device.

---

### Related Topic

- [Turning the power off](#)
- [Auto power off function](#)

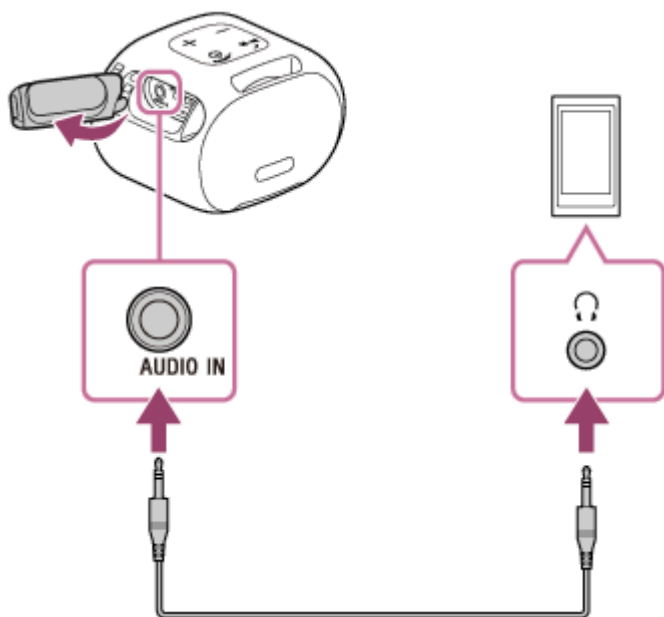


## Listening to music of a portable audio device, etc.

You can use the speaker as an ordinary wired speaker system by connecting a portable audio device, etc., using an audio cable (commercially available).

### 1 Connect a device to the AUDIO IN jack with an audio cable (commercially available).

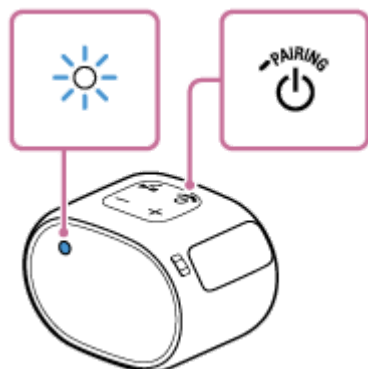
For connection, use an audio cable with a stereo mini plug (no resistance)\* at both ends.



\* If you use an audio cable (with stereo mini plugs) with significant resistance, the sound may be lower. Therefore, make sure you use a cable (with stereo mini plugs) without resistance.

### 2 Turn on the speaker.

The power/BLUETOOTH indicator flashes slowly in blue.

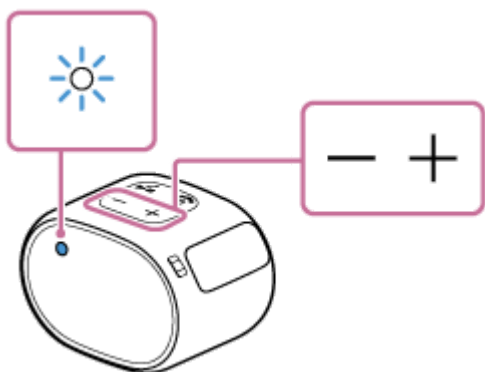


### 3 Turn on and start playback on the connected device.

### 4 Adjust the volume to a moderate level on the connected device.

### 5 Press the -/+ (volume) buttons to adjust the volume.

When you press the  $-/+$  (volume) buttons, the power/BLUETOOTH indicator flashes once. When you set the volume to the maximum (31) or minimum level on the speaker, the power/BLUETOOTH indicator flashes 3 times.



### Hint

- When you cannot hear the sound, raise the volume on the connected device.
- If the BLUETOOTH connection is active between the speaker and a mobile phone (smartphone/iPhone) via HFP/HSP, you can use the hands-free function while listening to music of a portable audio device, etc. that is connected to the speaker's AUDIO IN jack.

### Note

- If you connect an audio cable to the AUDIO IN jack, the output from the device connected to the AUDIO IN jack has priority, and you will not hear the sound from the BLUETOOTH device. The power/BLUETOOTH indicator lights up or flashes in blue to indicate the BLUETOOTH status. Absence of sound from the BLUETOOTH device does not indicate any trouble with the speaker.
- When connecting a portable audio device to the AUDIO IN jack and playing music, you cannot use the buttons on the speaker to perform operations such as pause, skip to the beginning of the next track, and skip to the beginning of the current track.
- Do not use the AUDIO IN jack in a place where water may splash.

---

### Related Topic

- [Auto power off function](#)
- [Receiving a call](#)

Wireless Speaker  
SRS-XB01

## Receiving a call

You can enjoy hands-free calls with a BLUETOOTH mobile phone that supports the BLUETOOTH profile HFP (Hands-free Profile) or HSP (Headset Profile) via BLUETOOTH connection.

- If your BLUETOOTH mobile phone supports both HFP and HSP, set it to HFP.
- Operations may vary depending on the BLUETOOTH mobile phone. Refer to the operating instructions supplied with the mobile phone.

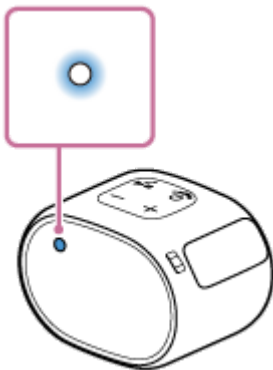
### About ring tones

When an incoming call arrives, playback pauses and a ring tone will be heard via the speaker. The ring tone varies in the following ways, depending on your BLUETOOTH mobile phone.

- Ring tone set on the speaker
- Ring tone set on the BLUETOOTH mobile phone
- Ring tone set on the BLUETOOTH mobile phone only for a BLUETOOTH connection

#### 1 Connect the speaker with a BLUETOOTH mobile phone.

The power/BLUETOOTH indicator lights up in blue when the BLUETOOTH connection is established.



#### 2 Press the ►|| (play)/ 📞 (call) button when a call is received.

Talk into the microphone of the speaker.

When an incoming call arrives, playback pauses and a ring tone is heard from the speaker.

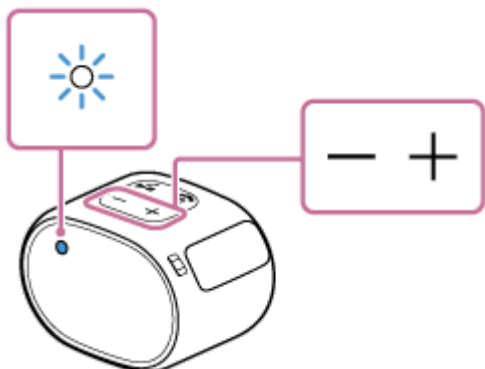


If no ring tone is heard via the speaker, the speaker may not be connected with a BLUETOOTH mobile phone with HFP or HSP. Check the connection status on the BLUETOOTH mobile phone.

**3 Adjust the volume by pressing the  $-/+$  (volume) buttons on the speaker or operating the BLUETOOTH mobile phone.**

When you press the  $-/+$  (volume) buttons on the speaker or adjust the volume on the BLUETOOTH mobile phone, the power/BLUETOOTH indicator flashes once.

When you set the volume to the maximum (31) or minimum level on the speaker, the power/BLUETOOTH indicator flashes 3 times.



**4 To end a call, press the  (play)/  (call) button.**

If you were listening to music before the call, playback will resume when the call ends. If you end a call by operating the BLUETOOTH mobile phone, playback will also resume when the call ends if you were listening to music before the call.

**Hint**

- Some BLUETOOTH mobile phones have handset use priority when receiving a call. In the case of the HFP or HSP connection, switch the call device to the speaker by operating your BLUETOOTH mobile phone.
- If the caller cannot hear or can barely hear your voice, talk more directly into the microphone of the speaker.
- The volume of music playback and calling is set independently in the speaker.

**Note**

- Depending on the BLUETOOTH mobile phone, playback may not pause when an incoming call arrives.
- Use a BLUETOOTH mobile phone at least 50 cm (1.6 ft) away from the speaker. Noise may result if the speaker and the BLUETOOTH mobile phone are too close.
- If an audio cable is connected to the AUDIO IN jack of the speaker, you cannot listen to music of the BLUETOOTH device. However, when the BLUETOOTH connection is active, the hands-free function is available.
- Depending on the model of your smartphone, the operation system or applications installed, some functions of hands-free calling may not be used correctly.

**Related Topic**

- [Pairing and connecting with BLUETOOTH® devices](#)
- [Terminating the BLUETOOTH connection \(After use\)](#)
- [Making a call](#)



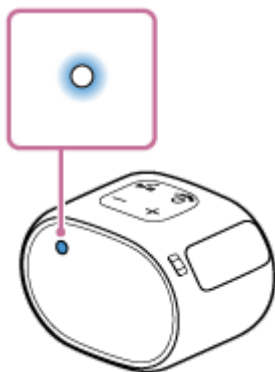
## Making a call

You can enjoy hands-free calls with a BLUETOOTH mobile phone that supports the BLUETOOTH profile HFP (Hands-free Profile) or HSP (Headset Profile) via BLUETOOTH connection.

- If your BLUETOOTH mobile phone supports both HFP and HSP, set it to HFP.
- Operations may vary depending on the BLUETOOTH mobile phone. Refer to the operating instructions supplied with the mobile phone.

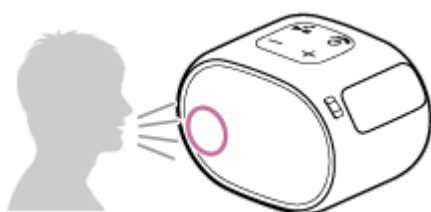
### 1 Connect the speaker with a BLUETOOTH mobile phone.

The power/BLUETOOTH indicator lights up in blue when the BLUETOOTH connection is established.





### 2 Operate the BLUETOOTH mobile phone to make a call.

When you make a call, playback pauses and the dial tone is heard from the speaker. When the receiver takes the call, talk into the microphone of the speaker.



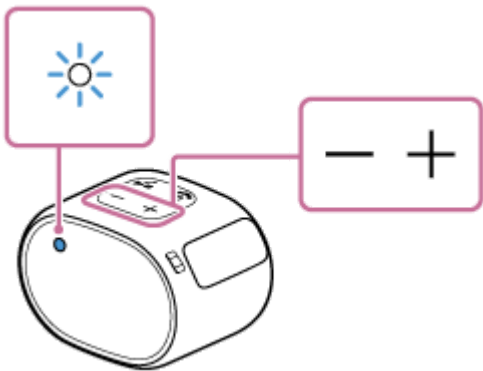
#### If no dial tone is heard via the speaker

- The speaker may not be connected with a BLUETOOTH mobile phone with HFP or HSP. Check the connection status on the BLUETOOTH mobile phone.
- Switch the call device to the speaker by pressing and holding the  (play)/  (call) button for about 2 seconds.

### 3 Adjust the volume by pressing the **-/+** (volume) buttons on the speaker or operating the BLUETOOTH mobile phone.

When you press the **-/+** (volume) buttons on the speaker or adjust the volume on the BLUETOOTH mobile phone, the power/BLUETOOTH indicator flashes once.

When you set the volume to the maximum (31) or minimum level on the speaker, the power/BLUETOOTH indicator flashes 3 times.



**4 To end a call, press the ►|| (play)/ 📞 (call) button.**

If you were listening to music before the call, playback will resume when the call ends. If you end a call by operating the BLUETOOTH mobile phone, playback will also resume when the call ends if you were listening to music before the call.

**Hint**

- If the caller cannot hear or can barely hear your voice, talk more directly into the microphone of the speaker.
- The volume of music playback and calling is set independently in the speaker.

**Note**

- Depending on the BLUETOOTH mobile phone, playback may not pause when making a call.
- Use a BLUETOOTH mobile phone at least 50 cm (1.6 ft) away from the speaker. Noise may result if the speaker and the BLUETOOTH mobile phone are too close.
- When an audio cable is connected to the AUDIO IN jack of the speaker, you cannot listen to music of the BLUETOOTH device. However, when the BLUETOOTH connection is active, the hands-free function is available.

---

**Related Topic**

- [Pairing and connecting with BLUETOOTH® devices](#)
- [Terminating the BLUETOOTH connection \(After use\)](#)
- [Receiving a call](#)

## About the indicators

### Charge indicator (orange)

Turns off	The speaker has completed charging.
Lights up	The speaker is being charged.
Flashes slowly	The built-in battery is running at less than 10% and needs to be charged.
Flashes 3 times and turns off	If the charge indicator flashes 3 times and goes off when you turn on the speaker, the built-in battery is empty and needs to be charged.

#### Note

- A speaker that is in use can be charged if it is connected to an AC outlet via a USB AC adaptor (commercially available), or connected to a booted computer. In this case, it may take longer to charge the built-in battery depending on the conditions of use. Therefore, it is recommended to turn off the speaker when charging.
- When you use the speaker at a loud volume for a long time, the built-in battery may run low even if the speaker is connected to an AC outlet via a USB AC adaptor (commercially available), or connected to a booted computer. As a result, sound becomes low. This is not a malfunction. Turn off the speaker and charge the built-in battery sufficiently.
- In an extremely cold or hot environment, charging stops for safety. If charging takes a long time, it also makes charging of the speaker stop. To resolve these issues, disconnect the micro-USB cable from the speaker and connect it again within an operating temperature between 5 °C and 35 °C (41 °F and 95 °F).

### Power/BLUETOOTH indicator (blue)

Lights up	The speaker is connected to a BLUETOOTH device.
Flashes quickly (3 times a second)	The speaker enters the pairing mode.
Flashes slowly	The speaker is waiting for a BLUETOOTH device to connect to.
Flashes once	Each time you press the -/+ (volume) button, the indicator flashes once.
Flashes 3 times	When you operate the -/+ (volume) button and the volume is set at the lowest or highest level, the indicator flashes 3 times.

#### Related Topic

- [Parts and controls](#)



## Precautions

---

### On placement

- Do not set the unit in an inclined position.
- Do not leave the unit in a place subject to high temperatures, such as direct sunlight, near a heat source or under lighting equipment.
- Do not use or leave the unit in a car.

### Others

- Do not use or leave the unit in an extremely cold or hot environment (temperature outside the range of 5 °C – 35 °C (41 °F – 95 °F)). If the unit is used or left in outside the above range, the unit may automatically stop to protect internal circuitry.
- At high temperature, the charging may stop or the volume may reduce to protect the battery.
- When you find the charge indicator flashing, charge the battery. By charging the battery after the indicator starts flashing, you can use the battery longer.
- Even if you do not intend to use the unit for a long time, charge the battery to its full capacity once every 6 months to maintain its performance.

## Notes on charging

---

### Life span of the built-in Ni-MH battery

- When you find the charge indicator flashing, charge the battery. By charging the battery after the indicator starts flashing, you can use the battery longer.
- Even if you do not intend to use the speaker for a long time, charge the built-in battery sufficiently once every 6 months to maintain its performance.
- If the speaker is not used for a long time, it may take longer to charge the built-in battery.
- The rechargeable built-in battery has a life span. As time passes and the number of times that the built-in battery is used increases, the capacity of the rechargeable built-in battery slowly decreases. When the amount of time that the built-in battery can be used seems significantly shorter, refresh the battery. To refresh the battery, see [The built-in battery life is short](#).  
If the battery life still does not improve, it could be the built-in battery has expired. Consult your nearest Sony dealer.
- The life span of the rechargeable built-in battery differs depending on the usage, environment, and storage method.

### Caution

When the speaker detects a problem for the following causes while charging the built-in battery, the charge indicator (orange) turns off even if charging is not completed.

- Ambient temperature exceeds the range of 5 °C – 35 °C (41 °F – 95 °F).
- There is a problem with the built-in battery.
- When charging to the built-in battery continues for a long time.

### Note

- Charging time varies depending on built-in battery usage conditions.
- Charge the speaker in an ambient temperature between 5 °C and 35 °C (41 °F and 95 °F).
- The speaker becomes warm during charging. This is not a malfunction.
- Avoid exposure to rapid temperature change, direct sunlight, mist, sand, dust, or mechanical shock. Also, never leave the speaker in a car parked in the sun.
- A speaker that is in use can be charged if it is connected to an AC outlet via a USB AC adaptor (commercially available), or connected to a booted computer. In this case, it may take longer to charge the built-in battery depending on the conditions of use. Therefore, it is recommended to turn off the speaker when charging.
- In an extremely cold or hot environment, charging stops for safety. If charging takes a long time, it also makes charging of the speaker stop. To resolve these issues, disconnect the micro-USB cable from the speaker and connect it again within an operating temperature between 5 °C and 35 °C (41 °F and 95 °F).

---

### Related Topic

- [The built-in battery life is short](#)



## Notes on water resistant feature

### Water resistant performance of the unit

This unit has a water resistant specification<sup>\*1</sup> <sup>\*2</sup> of IPX5<sup>\*3</sup> as specified in “Degrees of protection against ingress of water” of the IEC60529 “Ingress Protection Rating (IP Code).” However, this unit is not completely water-tight. Do not drop the unit into hot water in a bathtub or purposely use it in water.

### Liquids that the water resistant performance specifications apply to

Applicable	fresh water, tap water
Not applicable	liquids other than the above (soapy water, water with detergent or bath agents, shampoo, hot spring water, pool water, seawater, etc.)

\*1 Requires that the cap is fastened securely.

\*2 The supplied accessories and the connectors of this unit (USB/AUDIO IN) are neither water resistant nor dust proof.

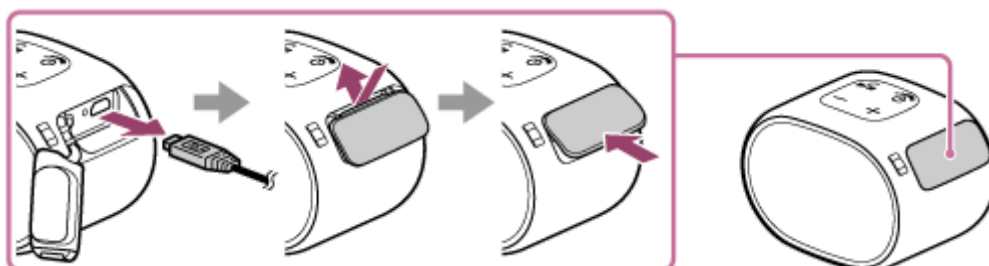
\*3 IPX5 (Degree of protection against jets of water): The speaker has been tested and found to remain functional after exposure to direct jet streams of water using a nozzle of 6.3 mm (about 1/4 in) internal diameter from any direction where approximately 12.5 L/min of water is applied for a period of more than 3 minutes from a distance of about 3 meters (about 10 ft).

The water resistant performance of the unit is based on our measurements under the conditions herein described. Note that malfunctions as a result of water immersion caused by misuse by the customer are not covered by the warranty.

### To avoid the deterioration of the water resistant performance

Check the following and use the unit correctly.

- Be careful not to drop the unit or subject it to mechanical shock. Deformation or damage may cause deterioration of the water resistant performance.
- This unit does not have a design that is resistant to water pressure. Use of the unit in a location where high water pressure is applied, such as in the shower, may cause a malfunction.
- Do not pour high-temperature water or blow hot air from a hair dryer or any other appliance on the unit directly. Also, never use the unit in high temperature locations such as in saunas or near a stove.
- Handle the cap with care. The cap plays a very important role in maintenance of the water resistant performance. When using the unit, make sure that the cap is closed completely. When closing the cap, be careful not to allow foreign objects inside. If the cap is not closed completely, the water resistant performance may deteriorate and may cause a malfunction of the unit as a result of water entering the unit.





Wireless Speaker  
SRS-XB01

## How to care for the speaker

---

You can use the speaker more comfortably and for a longer period of time by following the maintenance procedure below.

- If the surface of the speaker gets dirty in the following cases, wash the speaker with fresh water (tap water, etc.) promptly to remove the dirt. Leaving dirt on its surface may cause the speaker to malfunction.  
Ex.
  - When salt, sand, etc. is stuck on the speaker after using it on a beach, pool side, etc.
  - When the speaker is stained with foreign substances (sunscreen, suntan oil, etc.)
- If the speaker gets wet, first remove the water from the speaker, and then wipe off the moisture on the speaker using a dry, soft cloth.
- Especially in cold regions, leaving moisture on its surface may cause the speaker to freeze and malfunction. Be sure to wipe off the moisture after using the speaker.
- The sound quality may change when water enters the speaker section. It is not malfunction. Put the speaker on a dry, soft cloth with the speaker part facing down to drain the collected water inside the speaker. Then leave it at room temperature and dry the speaker until no moisture remains.

### Note

- If the surface of the speaker gets dirty, do not use detergent, thinner, benzene, alcohol, etc. to clean the speaker.

Wireless Speaker  
SRS-XB01

## About the BLUETOOTH wireless technology

The BLUETOOTH wireless technology operates within a range of about 10 m (about 32 ft).

### Maximum communication range

Maximum communication range may shorten under the following conditions.

- There is an obstacle such as a person, metal, or wall between the speaker and BLUETOOTH device.
- A wireless LAN device is in use near the speaker.
- A microwave oven is in use near the speaker.
- A device that generates electromagnetic radiation is in use near the speaker.

### Interference from other devices

Because BLUETOOTH devices and wireless LAN (IEEE802.11b/g) use the same frequency, microwave interference may occur and result in communication speed deterioration, noise, or invalid connection if the speaker is used near a wireless LAN device. In such a case, perform the following.

- Use the speaker at least 10 m (about 32 ft) away from the wireless LAN device.
- If the speaker is used within 10 m (about 32 ft) of a wireless LAN device, turn off the wireless LAN device.

### Interference to other devices

Microwaves emitted from a BLUETOOTH device may affect the operation of electronic medical devices. Turn off the speaker and other BLUETOOTH devices in the following locations, as it may cause an accident.

- Where inflammable gas is present, in a hospital, train, airplane, or a gas station
- Near automatic doors or a fire alarm

#### Note

- To be able to use the BLUETOOTH function, the BLUETOOTH device to be connected requires the same profile as the speaker's. Note also that even if the same profile exists, devices may vary in function depending on their specifications.
- Due to the characteristic of BLUETOOTH wireless technology, the sound played on the speaker is slightly delayed from the sound played on the BLUETOOTH device while talking on the telephone or listening to music.
- The speaker supports security capabilities that comply with the BLUETOOTH standard to provide a secure connection when the BLUETOOTH wireless technology is used, but security may not be enough depending on the setting. Be careful when communicating using BLUETOOTH wireless technology.
- We do not take any responsibility for the leakage of information during BLUETOOTH communication.
- A device featuring the BLUETOOTH function is required to conform to the BLUETOOTH standard specified by the Bluetooth SIG, Inc. and be authenticated. Even if the connected device conforms to the above mentioned BLUETOOTH standard, some devices may not be connected or work correctly, depending on the features or specifications of the device.
- Noise or sound interruption may occur depending on the BLUETOOTH device connected with the speaker, the communication environment or the usage environment.
- A device with a built-in radio or tuner cannot be connected to the speaker via BLUETOOTH since noise may occur in broadcasts.
- Locate the speaker farther away from a TV, radio or tuner, etc. since noise may occur in broadcasts.





Wireless Speaker  
SRS-XB01

## Trademarks

---

- The BLUETOOTH® word mark and logos are registered trademarks owned by the Bluetooth SIG, Inc. and any use of such marks by Sony Corporation is under license.
- iPhone and iPod touch are trademarks of Apple Inc., registered in the U.S. and other countries.
- Mac and macOS are trademarks of Apple Inc., registered in the U.S. and other countries.
- Microsoft and Windows are registered trademarks or trademarks of Microsoft Corporation in the United States and/or other countries.
- Other trademarks and trade names are those of their respective owners.
- ™ and ® marks are omitted in the documents.

Wireless Speaker  
SRS-XB01

## Notes on software

---

### Notes on the License

This speaker contains software that Sony uses under a licensing agreement with the owner of its copyright. We are obligated to announce the contents of the agreement to customers under requirement by the owner of copyright for the software.

Please read the contents of the license described in the URL below.

<http://rd1.sony.net/help/speaker/sl/18e/>

Wireless Speaker  
SRS-XB01

## What can I do to solve a problem?

---

If the speaker does not function as expected, try the following steps to resolve the issue.

- Find the symptoms of the issue in this Help Guide and try any corrective actions listed.
- Charge the speaker.  
You may be able to resolve some issues by charging the built-in battery.
- Push the RESET button of the speaker.  
See [Using the RESET button](#) for more information.
- Initialize the speaker.  
This operation restores the settings such as volume, etc. to the factory default settings, and deletes all pairing information.  
See [Initializing the speaker](#) for more information.
- Look up information on the issue on the customer support website.
- Access the following support home pages to get support information about your speaker:
  - For customers in the USA:  
<http://esupport.sony.com/US>
  - For customers in Canada:  
<http://esupport.sony.com/CA/>
  - For customers in European countries:  
<http://www.sony.eu/support>
  - For customers in Latin America:  
<http://www.sony-latin.com/>
  - For customers in other countries/regions:  
<http://www.sony-asia.com/section/support>

If the operations above do not work, consult your nearest Sony dealer.

---

### Related Topic

- [Using the RESET button](#)
- [Initializing the speaker](#)

Wireless Speaker  
SRS-XB01

## Unable to charge the speaker

---

- When using a USB AC adaptor (commercially available), make sure the micro-USB cable is firmly connected to the speaker and the USB AC adaptor. In addition, make sure the USB AC adaptor is firmly connected to an AC outlet.
  - The speaker supports a USB AC adaptor (commercially available) with an output current of 500 mA or more. However, using a supplied micro-USB cable or micro-USB cable conforming to the USB standard is recommended. Charging from the other device is not guaranteed.
  - You can also charge the built-in battery by connecting it to a booted computer via the micro-USB cable. However, operation with all computers is not guaranteed. Operation with a home-built computer is also not covered by the warranty.
- 

### Related Topic

- [Charging the speaker](#)
- [About the indicators](#)

## The built-in battery life is short

---

- Due to the characteristics of the built-in battery, repeatedly charging it may shorten the battery life. If you feel that the battery life has become extremely short after fully charging it, try the following procedure.  
In order to completely exhaust the built-in battery, continue to use the speaker until it automatically turns off even if the charge indicator is flashing. After completely running out of the built-in battery, immediately charge it to its maximum capacity (built-in battery refresh). The built-in battery will be refreshed and the battery life may improve. If the battery life still does not improve, it could be the built-in battery has expired. Consult your nearest Sony dealer.

Wireless Speaker  
SRS-XB01

## Unable to turn on the speaker or the speaker suddenly turns off

---

- The built-in battery may be empty or running low. Charge the speaker by connecting the speaker to an AC outlet via a USB AC adaptor (commercially available), or connecting it to a booted computer.
  - The auto power off function may have activated. After about 15 minutes in certain circumstances, such as when the volume of the audio input is low, the power will automatically turn off. Raise the volume of the connected device for use.
- 

### Related Topic

- [Charging the speaker](#)
- [Auto power off function](#)

## No sound/Distorted sound/Humming or noise in the speaker output/No voice from callers

---

- Check that both the speaker and the connected device are turned on.
- Turn up the volume of the speaker and the connected device.
- Check that the connected device is playing.
- Make sure the audio cable is disconnected from the AUDIO IN jack during playback in BLUETOOTH mode.
- Make sure the audio cable is firmly connected to the AUDIO IN jack during playback in AUDIO IN mode.
- If you are connecting a computer to the speaker, make sure the audio output setting of the computer is set for a BLUETOOTH device.
- Check that the speaker has established BLUETOOTH connection with the BLUETOOTH device.
- Pair the speaker and the BLUETOOTH device again.
- If the connected device has an equalizer function, set it to off.
- Keep the speaker away from a microwave oven, Wi-Fi, etc.
- Bring the speaker and the BLUETOOTH device closer together. Remove any obstacles between the speaker and the BLUETOOTH device.
- When the speaker is connected to a device with a built-in radio or tuner via a BLUETOOTH connection, noise may occur in broadcasts.
- Locate the speaker farther away from a TV, radio or tuner, etc. since noise may occur in broadcasts.
- When listening to music, select an A2DP BLUETOOTH connection by operating the BLUETOOTH device.
- When receiving/making a phone call, select an HFP or HSP BLUETOOTH connection by operating the BLUETOOTH device.
- When receiving/making a phone call, check that output of the BLUETOOTH device is set for the speaker.

---

### Related Topic

- [Pairing and connecting with BLUETOOTH® devices](#)
- [Listening to music of a device via BLUETOOTH connection](#)
- [About the indicators](#)
- [Receiving a call](#)
- [Making a call](#)

Wireless Speaker  
SRS-XB01

## Sound becomes low while in use

---



- The sound may become low in the following cases. This is not a malfunction.
  - When the built-in battery is running low and the charge indicator flashes slowly, while the speaker is being powered by the built-in battery only.
  - When the built-in battery is running low as a result of using the speaker at a loud volume for a long time even if the speaker is connected to an AC outlet via a USB AC adaptor (commercially available), or connected to a booted computer.
  
- If the sound becomes low while in use, follow the procedure below.
  1. Turn off the speaker.
  2. Charge the built-in battery sufficiently.



Wireless Speaker  
SRS-XB01

## Unable to pair the speaker with a BLUETOOTH device

---

- Place the speaker and the BLUETOOTH device within 1 m (3 ft) of each other.
  - If the power/BLUETOOTH indicator is not flashing quickly in blue, press and hold the  (power)/  PAIRING button until you hear beeps and the power/BLUETOOTH indicator begins to flash quickly in blue.
  - Once the speaker is initialized, an iPhone/iPod touch may not be able to connect to the speaker. In this case, delete pairing information on the iPhone/iPod touch, then pair them again.
  - Check that the BLUETOOTH device is turned on and the BLUETOOTH function is activated on the device.
  - If the speaker is not displayed on the BLUETOOTH device, turn off the device, and then turn on the device again. It may improve symptoms.
- 

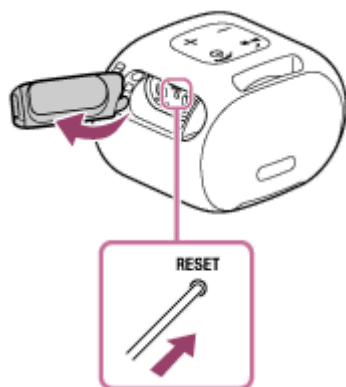
### Related Topic

- [Pairing and connecting with BLUETOOTH® devices](#)
- [About the indicators](#)

Wireless Speaker  
SRS-XB01

## Using the RESET button

If the speaker cannot be turned on or cannot be operated despite being turned on, open the cap on the right side and push the RESET button with a pin or other pointed object. The speaker is reset and turns off.



After pushing the RESET button, turn on the speaker. If it does not turn on, consult your nearest Sony dealer.

### Note

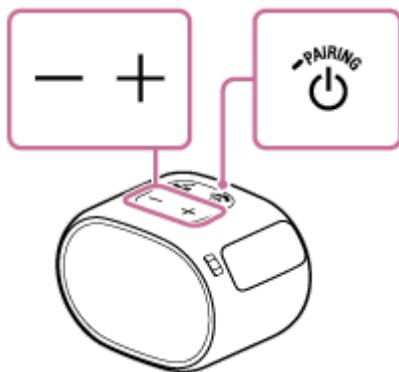
- The speaker cannot be reset while the power is off.
- Pairing information is not deleted by pushing the RESET button. This is different from the speaker initialization.
- After resetting the speaker, the volume and function settings may be different.

Wireless Speaker  
SRS-XB01

## Initializing the speaker

---

With the speaker turned on, press and hold the  $-/+$  (volume) buttons and the  $\text{⏻}$  (power)/ **PAIRING** button at the same time for more than 5 seconds until the speaker turns off.



The speaker is initialized. Settings such as volume, etc., are restored to the factory default settings, and all pairing information is deleted.