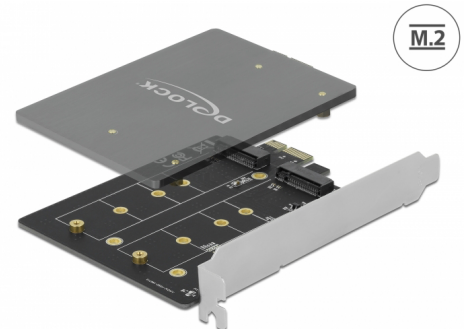


# Delock PCI Express x1 Card to 2 x internal M.2 Key B

## Description

This PCI Express card by Delock expands the PC by **two M.2 slots**. Up to two M.2 SATA modules can be connected in format 2280, 2260, 2242, 2230 with this card. With the help of the **large heat sink** sufficient cooling of the M.2 modules is guaranteed.



**Item no. 90432**

EAN: 4043619904327

Country of origin: China

Package: Retail Box

## Specification

- Connectors:  
internal:  
2 x 67 pin M.2 key B slot  
1 x PCI Express x1, V3.0
- Chipset: JMicron JMB582
- 3 x LED indicator
- Interface: SATA
- Supports M.2 modules in format 2280, 2260, 2242 and 2230 with key B or key B+M based on SATA
- Maximum height of the components on the module: 1.5 mm, application of double-sided assembled modules supported
- Supports Native Command Queuing (NCQ)
- Supports S.M.A.R.T.
- Supports TRIM
- Supports DevSleep
- Hot Swap
- Bootable

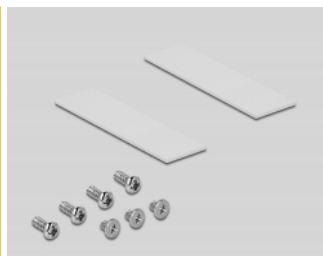
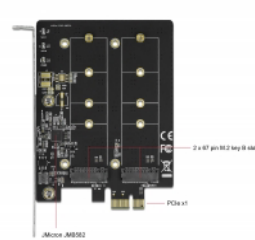
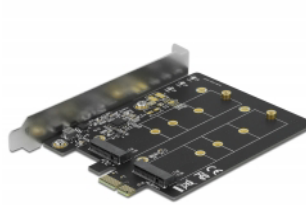
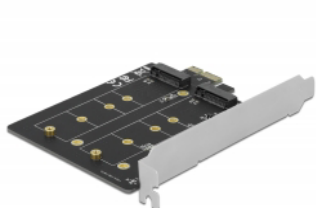
## System requirements

- Linux Kernel 3.3 or above
- Windows 7/7-64/8.1/8.1-64/10/10-64
- PC with one free PCI Express slot

## Package content

- PCI Express card
- Heat sink
- 2 x thermal pad
- M.2 mounting material
- User manual

## Images



## General

Form factor:	Low Profile
Supported operating system:	Linux Kernel 3.3 or above Windows 10 32-Bit Windows 10 64-Bit Windows 7 32-Bit Windows 7 64-Bit Windows 8.1 32-Bit Windows 8.1 64-Bit
Supported module:	M.2 modules in format 22110, 2280, 2260, 2242 and 2230 with key B or key B+M based on SATA

## Interface

Connector 1:	1 x PCI Express x1, V3.0
Connector 2:	2 x 67 pin M.2 key B slot

## Technical characteristics

Chipset:	JMicron JMB582
----------	----------------

## Physical characteristics

Slot bracket:	Low Profile standard
---------------	-------------------------