

PHILIPS

EVNIA

4K UHD gaming
monitor

Gaming Monitor

Evia 5000

32 (31.5"/80 cm diag.)

3840 x 2160 (4K UHD)

32M1N5800A



Feel your game

This Philips gaming monitor brings games to life with its 4K IPS display and DisplayHDR 400. Rapid 144 Hz refresh rate, 1 ms response time and Sync technology guarantee smooth visuals.

Best synchronisation between GPU and monitor

- Certified NVIDIA® G-SYNC® compatible for smooth, fast gaming
- AMD FreeSync™ Premium; tear free, stutter free, fluid gaming

Meet the most recent update of HDMI specification

- UltraClear 4K UHD (3840 x 2160) resolution for precision
- 144 Hz refresh rates for ultra-smooth, brilliant images
- Low input lag reduces time delay between devices to monitor
- SmartImage HDR gives optimal viewing from your HDR content

Immersive visuals

- IPS LED wide view technology for image and colour accuracy
- Ultra Wide-Color wider range of colours for a vivid picture

Features designed for you

- SIAA-certified antibacterial treatment to keep surfaces sanitary
- MultiView enables simultaneous dual connection and view
- 1 ms (MPRT) fast response for crisp images and smooth gameplay



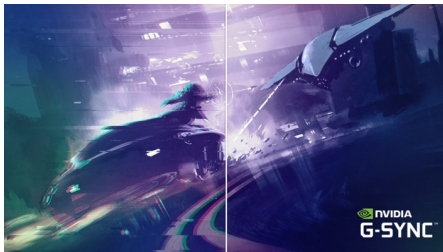
Highlights

AMD FreeSync™ Premium



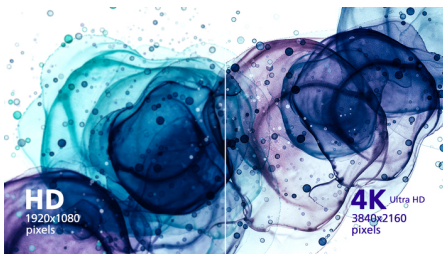
Gaming shouldn't be a choice between choppy gameplay or broken frames. AMD FreeSync™ Premium equips serious gamers with a fluid, tear-free gameplay experience at peak performance. There are no compromises, game confidently with a high refresh rate, low framerate compensation and low latency.

NVIDIA® G-SYNC® compatible



When playing intense games with high refresh rates, screen tearing may appear without optimal graphics synchronisation. This Philips display is certified as NVIDIA® G-SYNC® compatible, reducing screen tearing and syncing your monitor's refresh rate with your graphic card's output for a smoother gaming experience. Scenes appear instantly, objects look sharper, and gameplay is smooth, giving you a stunning visual experience and a serious competitive edge.

UltraClear 4K UHD resolution



These Philips displays utilise high-performance panels to deliver UltraClear, 4K UHD (3840 x 2160) resolution images.

Whether you are a demanding professional requiring extremely detailed images for CAD solutions, a user of 3D graphics applications or a financial wizard working on huge spreadsheets, Philips displays will make your images and graphics come alive.

144 Hz Gaming



You play intense, competitive games. You demand a display with lag-free, ultra-smooth images. This Philips display redraws the screen image up to 144 times per second, effectively 2.4x faster than a standard display. A lower frame rate can make enemies appear to jump from spot to spot on the screen, making them difficult targets to hit. With 144 Hz frame rate, you get those critical missing images on the screen, showing enemy movement in ultra-smooth motion so you can easily target them. With ultra-low input lag and no screen tearing, this Philips display is your perfect gaming partner

1 ms MPRT fast response



MPRT (motion picture response time) is a more intuitive way to describe response time, which directly refers to the duration between seeing blurry noise and clean, crisp images. The Philips gaming monitor with 1 ms MPRT effectively eliminates smearing and motion blur and delivers sharper and more precise visuals to enhance your gaming experience. The best choice for playing thrilling and twitch-sensitive games.

Low Input Lag



Input lag is the amount of time that elapses between performing an action with connected devices and seeing the result on screen. Low input lag reduces the time delay between entering a command from your devices to monitor, greatly improving play on twitch-sensitive video games, particularly important for playing fast-paced, competitive games.

SmartImage HDR



Select one of SmartImage HDR modes to best suit your needs. HDR Game: optimised for playing video games. With brighter white and darker black, the gaming scene is vivid and reveals more details, easily spot enemies hiding in the dark corners and shadows. HDR Movie: ideal for watching HDR movie. Delivers better contrast and brightness for a more realistic and immersive viewing experience. HDR Photo: enhanced red, green and blue for lively visuals. DisplayHDR: VESA DisplayHDR certified*. Personal: customised settings in picture menu. *Please refer to specification for HDR grade.



Specifications

Picture/Display

LCD panel type: IPS technology
Backlight type: W-LED system
Panel Size: 31.5 inch/80 cm
Display Screen Coating: Anti-Glare, 3H, Haze 25%
Effective viewing area:
 697.344 (H) x 392.2344 (V)
Aspect ratio: 16:9
Maximum resolution: 3840 x 2160 @ 144 Hz
Pixel Density: 139.87 PPI
Response time (typical): 1 ms (Grey to Grey)*
MPRT: 1 ms
Low Input Lag
Brightness: 500 cd/m²
SmartContrast: Mega Infinity DCR
Contrast ratio (typical): 1000:1
Pixel pitch: 0.181 x 0.181 mm
Viewing angle: 178° (H) / 178° (V), @ C/R > 10
Flicker-free
HDR: DisplayHDR 400 certified
Colour gamut (typical): NTSC 113%*, sRGB 124%*, Adobe RGB 87.5%*
Picture enhancement: SmartImage game
Display colours: Colour support 1.07 billion colours
Scanning Frequency: 30–255 kHz (H) / 48–144 Hz (V)
SmartUniformity: 93 ~ 105%
Delta E: < 2 (sRGB)
LowBlue Mode
EasyRead
sRGB
G-SYNC: Compatible (DP)*
AMD FreeSync™ technology: Premium

Connectivity

Signal Input: HDMI 2.1 x 2, DisplayPort 1.4 x 2
HDCP: HDCP 1.4 (HDMI / DP); HDCP 2.2 (HDMI / DP)
USB: USB-B x 1 (upstream), USB 3.2 Gen 1 x 4 (downstream with 2 fast charge B.C 1.2)
Audio (In/Out): Audio out
Sync Input: Separate Sync

Convenience

Built-in Speakers: 5 W x 2
MultiView: PBP (2 x devices)
User convenience: Power On/Off, Menu/OK,

Input/Up, Game Settings/Down, SmartImage game/Back
OSD Languages: Brazil Portuguese, Czech, Dutch, English, Finnish, French, German, Greek, Hungarian, Italian, Japanese, Korean, Polish, Portuguese, Russian, Spanish, Simplified Chinese, Swedish, Turkish, Traditional Chinese, Ukrainian
Other convenience: Kensington lock, VESA mount (100 x 100 mm)
Plug and Play Compatibility: DDC/CI, Mac OS X, sRGB, Windows 10 / 8.1 / 8 / 7

Stand

Height adjustment: 130 mm
Pivot: +/- 90 degree
Swivel: +/- 45 degree
Tilt: -5/20 degree

Power

On mode: 64.0 W (typ.)
Standby mode: 0.5 W (typ.)
Off mode: 0.3 W (typ.)
Energy Label Class: G
Power LED indicator: Operation - White, Standby mode - White (flashing)
Power supply: Internal, 100–240 VAC, 50–60 Hz

Dimensions

Product with stand (max height):
 715 x 640 x 297 mm
Product without stand (mm):
 715 x 420 x 60 mm
Packaging in mm (W x H x D):
 930 x 526 x 186 mm

Weight

Product with stand (kg): 10.55 kg
Product without stand (kg): 7.74 kg
Product with packaging (kg): 15.37 kg

Operating conditions

Temperature range (operation): 0°C to 40 °C
Temperature range (storage): -20°C to 60 °C
Relative humidity: 20%–80 %
Altitude: Operation: +12,000 ft (3658 m), Non-operation: +40,000 ft (12,192 m)
MTBF: 50 000 (Excluded backlight) hour(s)

Sustainability

Environmental and energy: RoHS
Recyclable packaging material: 100 %
Specific Substances: Mercury free, PVC/BFR free housing, SIAA

Compliance and standards

Regulatory Approvals: CB, CE Mark, FCC Class B, ICES-003, CU-EAC, EAEU RoHS, TUV/ISO9241-307, TUV-BAUART

Cabinet

Colour: Black
Finish: Textured

What's in the box?

Monitor with stand
Cables: HDMI cable, DisplayPort cable, USB upstream cable, Power cable
User Documentation

* "IPS" word mark / trademark and related patents on technologies belong to their respective owners.

* For best output performance, please always ensure that your graphic card is capable of achieving the maximum resolution and refresh rate of this Philips display.

* Response time value equal to SmartResponse

* MPRT adjusts the brightness for blur reduction, so the brightness cannot be adjusted while MPRT is turned on. To reduce motion blur, the LED backlight will strobe in time with the screen refresh rate, which may cause a noticeable change in brightness.

* MPRT is a gaming-optimised mode. Turning on MPRT may cause noticeable screen flickering. It is recommended to turn this mode off when you are not using the gaming function.

* NTSC Area based on CIE 1976

* sRGB Area based on CIE1931

* Adobe RGB Coverage based on CIE 1976

* NVIDIA® G-SYNC® support interface: DisplayPort

* Make sure to update NVIDIA® G-SYNC® driver to the latest version, see more information on NVIDIA website: <https://www.nvidia.com/>

* Make sure that your graphic card supports NVIDIA® G-SYNC®

* 2020 Advanced Micro Devices, Inc. All rights reserved. AMD, the AMD Arrow logo, AMD FreeSync™ and combinations thereof are trademarks of Advanced Micro Devices, Inc. Other product names used in this publication are for identification purposes only and may be trademarks of their respective companies.

* The monitor may look different from feature images.

