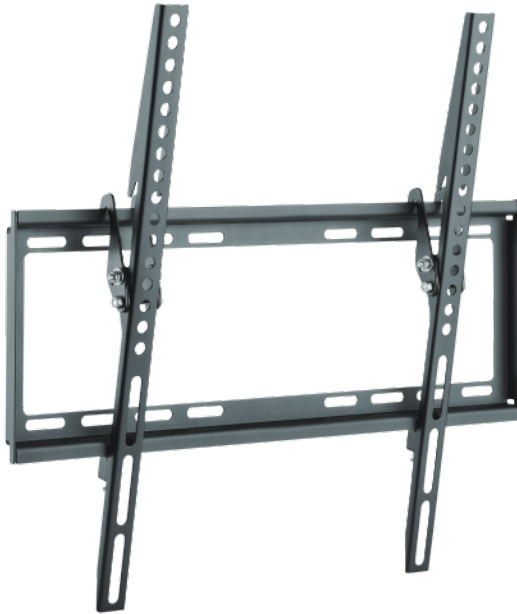


LogiLink®

Tilt TV Wall Mount for 32"-55" TV

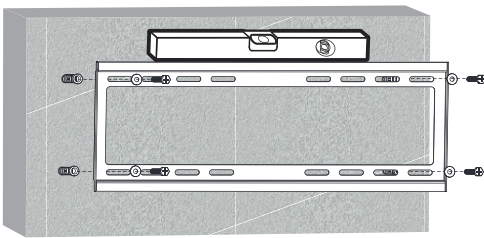
Art. No.: BP0037



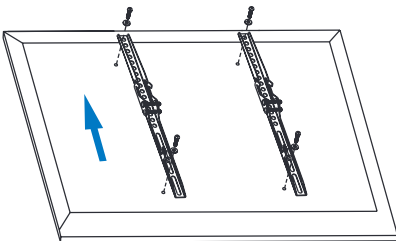
Easy installation and compatible with VESA standard max. 400 x 400mm.

Features:

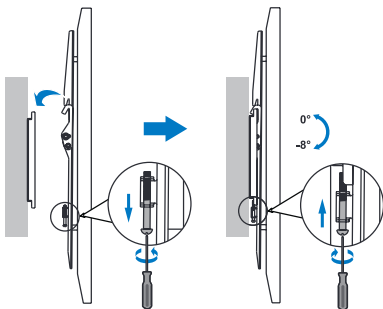
- » Super strong mounting brackets: Solid-reinforced Cold Steel, durable product with maximum capacity of 35kg
- » 20.5mm Profile from wall and Tilt Capacity: 0°~-8°
- » Compatible with VESA 200x200mm, 400x200mm, 300x300mm, 400x400mm
- » Easy to install
- » Fit for 32-55 inch LED LCD plasma TV, PC Monitor screens



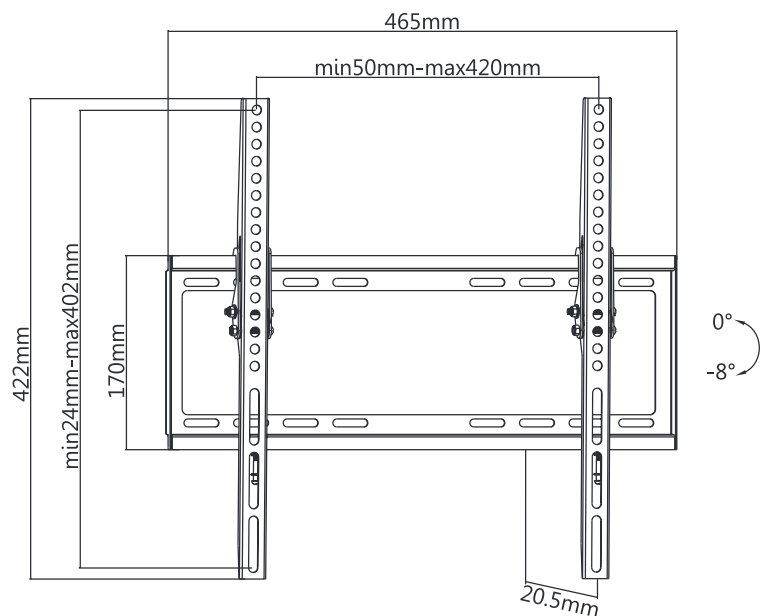
Install the wall plate to the Solid wall or Double Stud wall



Install the wall mount to back of the TV



Apply the TV with wall mount to the wall plate



RoHS
compliant

* The specifications and pictures are subject to change without notice.
* All trade names referenced are the registered trademark of their respective owners.



BP0037



4 052792 046359

Made in China

LogiLink®

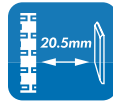
Tilt TV Wall Mount for 32"-55" TV

Art. No.: BP0037



Specification:

Screen Size	32"-55"
Rated Load	35kg/77lbs
VESA	200x200, 400x200, 300x300, 400x400
Distance to the wall	20.5mm
Tilt	0° ~ -8°
Product Size	465 x 422 x 20.5mm



Package Contents:

- » 1 x TV Wall Mount
- » 1 x Screw Package

Package Informations:

- » Packing Dimension: 470 x 175 x 25mm
- » Packing Weight: kg
- » Carton Dimension: mm
- » Carton Q'ty: pcs
- » Carton Weight: kg

- ⚠ Please find out the weight and mounting hole distance of your TV before selecting a suitable mount.
- ⚠ Please download the user manual online at: <http://www.2direct.de/media/other/M-BP0037.pdf>



RoHS
compliant

* The specifications and pictures are subject to change without notice.
* All trade names referenced are the registered trademark of their respective owners.



BP0037



Made in China