

LATITUDE

5440

Thin client solution with
Dell Cloud Client Workspace

Work anywhere on our most
scalable and sustainable
Latitude¹⁷.

Configure your Latitude
5440 with Dell ThinOS, Dell
Hybrid Client or Windows 10
IoT Enterprise* and power
your VDI environment with
a smarter user experience,
stronger security and easier
IT management.



LATITUDE

5440

Thin client solution with Dell Cloud Client Workspace

Work anywhere on our most scalable¹⁷ and sustainable Latitude

Confidently access VDI environments with versatile thin client software solutions.

Ideal for those in specialized and complex fields who aim to produce results and detailed work. This mainstream business laptop offers scalable performance options, enterprise-level security and the world's most innovative use of sustainable materials¹⁴.

• • •
Secure access to digital and virtual workspaces

Versatile thin client operating system options and centralized control from Wyse Management Suite. Configure your Latitude 5440 with Dell ThinOS, Dell Hybrid Client or Windows 10 IoT Enterprise* to power your VDI environment with a smarter user experience, stronger security and easier IT management.

• • •
The world's smallest commercial mainstream PC¹⁴

Small and versatile with even more features that you expect from our most scalable Latitude.

• • •
Displays for every user

Improved entry-level screen and camera to FHD, and choose from ComfortView Plus low blue light options. Maximize your productivity with battery life saving panels.

• • •
More scalable performance options

Latest 13th Gen Intel Core U and P- series processors. Offering a vast array of memory options with optional DDR5 memory.

• • •
USB Type C & Thunderbolt 4

Dual USB Type C with Thunderbolt 4 ports are standard, HDMI 2.0, RJ45 and more.

• • •
Superior Thermals

Improved temperature and acoustic performance across the series¹⁴, plus dual opposite outlet fans.

• • •
Outstanding run-time

Multiple battery options up to 54Whr and next generation battery life saving panels.

• • •
Premium clickpad

Upgraded clickpad with an improved feel for better productivity.

• • •
Enhanced audio

Experience improved audio quality for optimal collaboration.

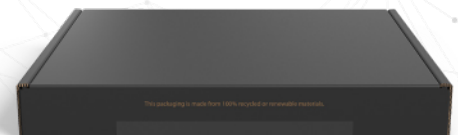
• • •
Wi-Fi 6E connections

Stay connected to fast Internet speeds (based on OS option*).

• • •
Our most sustainable Latitude Series

Latitude 5000 has increased its use of recycled and renewable plastics by 64% (by weight)¹⁴, with an expansion of Bio-based/PCR content into B/C/D covers, speaker housing, palm-rest and inner frame.

• • •
Security options Featuring options such as contactless smart card, TPM, fingerprint reader, wedge lock slot and privacy shutter.



Uses 100% recycled and renewable packaging, including more sustainable multipack packaging.

* Offering may vary by operating system. Refer to the technical specifications for more details. Some items may be available after product introduction.

See important information on last page

5440

Thin client solution with Dell Cloud Client Workspace

Cloud Client Workspace

Meet the evolving needs of the workforce and increase efficiency without compromising on security with Cloud Client Workspace software and Dell thin client solutions. Software and client devices designed to enhance virtual workspaces with smarter user experiences and stronger security.

Dell ThinOS¹

The most secure thin client OS* is purpose-built for VDI to deliver a simplified end-user and IT experience.

Dell Hybrid Client¹

Modern thin client software with incredible flexibility allowing secure access to applications and data, wherever they live – whether that’s in the data center, the cloud or the local device.

Windows 10 IoT Enterprise¹

Power and familiarity of Windows® in a thin client optimized by Dell with robust security features and flexible management options.

Wyse Management Suite

An enterprise-class solution that provides modern and secure management of all your Dell thin client solutions from anywhere.

Laptop, All-in-One and desktop form factor options give you the freedom to create a personalized virtual workspace. Work in confidence anywhere and enable a more productive and collaborative VDI experience with our new premium devices.



OptiPlex 3000 Thin Client
The OptiPlex 3000 Thin Client delivers a quiet, durable computing experience and makes it easier for you to multi-task.



OptiPlex All-in-One
Work in comfort and style with a sleek, new All-in-One design with collaboration and security features built in.



OptiPlex Micro Form Factor**
Ultra-compact desktop designed to free up workspaces.



Latitude 3440
Tackle tasks with this modern laptop equipped with upgraded features.



Latitude 5440
Achieve the perfect balance with this scalable laptop that boasts impressive power.

Enhance your virtual workspaces with more security and agility.

Secure by design

Work confidently with solutions designed to augment the security of your VDI and cloud environments.

Optimized user experience

Access digital and virtual workspaces with unprecedented simplicity and flexibility.

Simplified IT management

Modern management with hybrid cloud deployment provides greater control and agility.

[Click here to learn more about Cloud Client Workspace.](#)

* Based on Dell analysis of Dell ThinOS v. competitive products, January 2023.
** Dell ThinOS is not available to configure with the OptiPlex Micro Form Factor.


5000



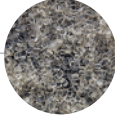

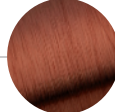
Sustainability on Dell Latitude 5000 series

Delivering innovative technology and solutions to reduce our environmental impact, for ourselves and our customers.

Sustainable Materials

Our use of sustainable materials helps reduce the environmental impact of making and recycling them.*



-  · 20% recycled carbon fiber in the lid and bottom cover**
-  · Recycled plastics in multiple locations of the product**
-  · 28% ocean bound plastic in the fan-housing
-  · 42-46% bio-based rubber in the feet on the bottom of the product and 21% in the lid**
-  · 50% recycled copper in AC adapter cable

++90% recycled plastics in AC adapter exterior, 50% PCR [battery housing, palm rest, inner frame, bezel (not applicable to 2-in-1 products)], 30% PCR [speaker housing, lid, bottom door (not applicable to 2-in-1 products)].
 **Recycled carbon fiber in bottom cover (not applicable to Latitude 5340 and 5340 2-in-1).
 ***Bio-based material in bottom cover (not applicable to Latitude 5340 2-in-1)

Packaging Innovation

Ships in new enhanced **100% recycled or renewable packaging that is also 100% recyclable.**+++ Multipack shipping available on eligible products.



Ecolabels

Eco-labeling standards drive sustainability further by helping customers understand electronic products and the companies that make them. This product meets the following standards:



Recycle

Securely and responsibly retire your IT equipment with Dell regardless of brand, in support of a circular economy. Learn more at Dell.com/Recycle

See how we are reducing the impact of our products and solutions Dell.com/Sustainable-Devices



RECOMMENDED SOLUTIONS WITH CLOUD CLIENT WORKSPACE

OFFICE



27 USB-C HUB Monitor - P2723DE

Stay productive no matter where you work with this sleek 27" QHD hub monitor with ComfortView Plus.



Dell Thunderbolt 4 Dock - WD22TB4

Experience lightning fast charging and Thunderbolt 4 connectivity with this flexible and powerful modular dock.



Dell Pro Wireless Headset - WL5022

Enjoy wireless freedom with this Teams certified headset with Bluetooth. Switch seamlessly to your PC or smartphone and enjoy crystal clear audio on the go.



Dell Pro Webcam – WB5023

Experience industry leading video quality and picture clarity in any lighting with this intelligent 2K QHD webcam.

HOME



Dell 24 Video Conferencing Monitor - C2423H

Stay in sync on a 24-inch FHD monitor with built-in conferencing essentials, low blue light and an eco-friendly design.



Dell Thunderbolt 4 Dock - WD22TB4

Experience lightning fast charging and Thunderbolt 4 connectivity with this flexible and powerful modular dock.



Dell Speakerphone - SP3022

Experience rich and clear audio with the intelligent Microsoft Teams certified speakerphone.



Dell Pro Wireless Keyboard and Mouse - KM5221W

Enhance your everyday productivity with a quiet full-size keyboard and mouse combo that offers programmable shortcuts and 36 months battery life.

ROAM



Dell 7-in-1 USB-C Multiport Adapter - DA310

Compact and portable 7-in-1 USB-C mobile adapter provides superb video, data connectivity and up to 90W power pass-through to your PC.



Dell EcoLoop Pro Backpack - CP5723

An eco-conscious backpack for protection on-the-go.



Dell Mobile Pro Wireless Mice - MS5120W Black

Connect your mouse conveniently via 2.4GHz wireless or Bluetooth and enhance your productivity with programmable shortcut buttons.



Dell Notebook Power Bank Plus USB C, 65Wh - PW7018LC

World's first notebook power bank to charge the widest range of USB-C laptops, as well as mobile devices.

5440

Thin client solution with Dell Cloud Client Workspace

FEATURE	TECHNICAL SPECIFICATION	TECHNICAL SPECIFICATION	TECHNICAL SPECIFICATION
THIN CLIENT SOLUTION¹	Latitude 5440 with Dell ThinOS ¹	Latitude 5440 with Dell Hybrid Client ¹	Latitude 5440 with Windows 10 IoT Enterprise LTSC 2021 ¹
THIN CLIENT OPERATING SYSTEM¹	Dell ThinOS ¹	Dell Hybrid Client with Ubuntu [®] 20.04 LTS, 64-bit ¹	Windows 10 IoT Enterprise LTSC 2021 (coming soon) ¹
PROCESSOR OPTIONS¹	13th Generation Intel [®] Core™ i3-1315U, 10 MB cache, 6 cores, 8 threads, up to 4.50 GHz Turbo 13th Generation Intel [®] Core™ i5-1345U, 12 MB cache, 10 cores, 12 threads, up to 4.70 GHz Turbo Additional options coming soon: 12th Generation Intel [®] Core™ i5-1235U, 12MB Cache, 10 cores, up to 4.40 GHz Turbo 12th Generation Intel [®] Core™ i5-1245U, 12MB Cache, 10 cores, up to 4.40 GHz Turbo 13th Generation Intel [®] Core™ i5-1335U, 12 MB cache, 10 cores, 12 threads, up to 4.60 GHz Turbo 13th Generation Intel [®] Core™ i5-1340P, 12MB Cache, 12 cores, 16 threads, up to 4.60 GHz Turbo 13th Generation Intel [®] Core™ i5-1350P, 12MB Cache, 12 cores, 16 threads, up to 4.70 GHz Turbo	13th Gen Intel [®] Core™ processors up to i7 U15 vPro [®] 13th Gen Intel [®] Core™ processors up to i7 P28 vPro [®] 12th Gen Intel [®] Core™ processors up to i7 U15 vPro [®] (n-1)	13th Gen Intel [®] Core™ processors up to i5 U15 13th Gen Intel [®] Core™ processors up to i5 P28 12th Gen Intel [®] Core™ processors up to i5 U15 (n-1)
MEMORY OPTIONS^{1,2,3,2}	8 GB, 1 x 8 GB, DDR4, 3200 MHz, single-channel 16 GB, 2 x 8 GB, DDR4, 3200 MHz, dual-channel Additional options coming soon: Up to 32GB DDR4 (socketed) 3200MHz - paired w/ U15 CPU Up to 32GB DDR5 (socketed) 4800MHz - paired w/ P28 CPU	Up to 64GB DDR4 (socketed) 3200MHz - paired w/ U15 CPU Up to 64GB DDR5 (socketed) 4800MHz - paired w/ P28 CPU	Up to 32GB DDR4 (socketed) 3200MHz - paired w/ U15 CPU Up to 32GB DDR5 (socketed) 4800MHz - paired w/ P28 CPU
CHIPSET¹	Integrated with the processor	Integrated with the processor	Integrated with the processor
GRAPHICS^{1,2}	Intel [®] Iris [®] Xe Graphics with Intel [®] Core™ i5 processors and dual-channel memory configuration Intel UHD Graphics with Intel [®] Core™ i3 processor or single channel memory	Intel [®] Iris [®] Xe Graphics with Intel [®] Core™ i5/i7 processors and dual-channel memory configuration Intel UHD Graphics with Intel [®] Core™ i3 processor or single channel memory Optional NVIDIA [®] GeForce [®] MX550 (2 GB GDDR6 dedicated)	Intel [®] Iris [®] Xe Graphics with Intel [®] Core™ i5 processors and dual-channel memory configuration Intel UHD Graphics with Intel [®] Core™ i3 processor or single channel memory
DISPLAY¹	14" FHD (1920 x 1080) Anti-Glare, 16x9, Non-touch, IPS, 250 nits, 45% NTSC 14.0" FHD (1920x1080) Anti-Glare,16x9, Non-touch, IPS, Super Low Power, ComfortView Plus Low Blue Light 400nits, sRGB 100% 14" FHD (1920 x 1080) Anti-Glare, 16x9, Touch, IPS, 300 nits, 72%, NTSC	14" FHD (1920 x 1080) Anti-Glare, 16x9, Non-touch, IPS, 250 nits, 45% NTSC 14.0" FHD (1920x1080) Anti-Glare,16x9, Non-touch, IPS, Super Low Power, ComfortView Plus Low Blue Light, 400nits, sRGB 100% 14" FHD (1920 x 1080) Anti-Glare, 16x9, Touch, IPS, 300 nits, 72%, NTSC	14" FHD (1920 x 1080) Anti-Glare, 16x9, Non-touch, IPS, 250 nits, 45% NTSC 14.0" FHD (1920x1080) Anti-Glare,16x9, Non-touch, IPS, Super Low Power, ComfortView Plus Low Blue Light, 400nits, sRGB 100% 14" FHD (1920 x 1080) Anti-Glare, 16x9, Touch, IPS, 300 nits, 72%, NTSC
STORAGE OPTIONS^{1,3,2}	Up to 512 GB, M.2 2230, PCIe, SSD, Class 35	Up to 1 TB, M.2 2230, PCIe, SSD, Class 35 2 TB, M.2 2230, PCIe NVMe, SSD, Class 25 256 GB, M.2 2230, PCIe NVMe, SED, Class 35	Up to 512 GB, M.2 2230, PCIe, SSD, Class 35
SECURITY¹	TPM 2.0 FIPS 140-2 Certified, TCG Certified Optional Contacted Smart Card with FIPS 140-2 Level 3 Certification Camera Shutter	TPM 2.0 FIPS 140-2 Certified, TCG Certified Optional Fingerprint Reader in power button Optional Contacted Smart Card with FIPS 140-2 Level 3 Certification Optional Contactless Smart Card NFC with FIPS 140-2 Level 3 Certification Camera Shutter	TPM 2.0 FIPS 140-2 Certified, TCG Certified Optional Contacted Smart Card with FIPS 140-2 Level 3 Certification Camera Shutter
DOCKING¹	Docks are optional, sold separately) Dell Thunderbolt™ Dock - WD22TB4	Docks are optional, sold separately) Dell Thunderbolt™ Dock - WD22TB4 Dell USB-C Dock - WD19S	Docks are optional, sold separately) Dell Thunderbolt™ Dock - WD22TB4
MULTIMEDIA¹	FHD Camera, Camera Shutter FHD + IR Camera, Camera Shutter 2 x High Quality Speakers 2 x Microphones Universal Audio jack No Camera / No Microphone Options Available	FHD Camera, Camera Shutter FHD + IR Camera, Camera Shutter 2 x High Quality Speakers 2 x Microphones Universal Audio jack No Camera / No Microphone Options Available	FHD Camera, Camera Shutter FHD + IR Camera, Camera Shutter 2 x High Quality Speakers 2 x Microphones Universal Audio jack No Camera / No Microphone Options Available
BATTERY OPTIONS^{1,5}	3-cell, 42 Wh, Li-ion 3-cell, 54 Wh, Li-ion	3-cell, 42 Wh, Li-ion 3-cell, 54 Wh, Li-ion	3-cell, 42 Wh, Li-ion 3-cell, 54 Wh, Li-ion
POWER OPTIONS¹	60W adapter, Type-C 65W adapter, Type-C 100W adapter, Type-C 60W adapter Type-C, 2-pin (Japan only)	60W adapter, Type-C 65W adapter, Type-C 100W adapter, Type-C 60W adapter Type-C, 2-pin (Japan only)	60W adapter, Type-C 65W adapter, Type-C 100W adapter, Type-C 60W adapter Type-C, 2-pin (Japan only)
WIRELESS LAN OPTIONS^{1,6}	Intel Garfield Peak 2 (AX211) 6GHz 2x2 AC+BT 5.3 vPro	Realtek RTL 8852BE 2x2 Wi-Fi 6E (if 6E Unavailable) – Intel Garfield Peak 2(AX211) 6GHz 2x2 AC+BT 5.3 vPro	Realtek RTL 8852BE 2x2 Wi-Fi 6E (if 6E Unavailable) – Intel Garfield Peak 2(AX211) 6GHz 2x2 AC+BT 5.3 vPro

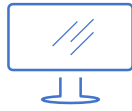
LATITUDE

5440

Thin client solution with Dell Cloud Client Workspace

FEATURE	TECHNICAL SPECIFICATION	TECHNICAL SPECIFICATION	TECHNICAL SPECIFICATION
THIN CLIENT SOLUTION¹	Latitude 5440 with Dell ThinOS ¹	Latitude 5440 with Dell Hybrid Client ¹	Latitude 5440 with Windows 10 IoT Enterprise LTSC ²⁰²¹ ¹
PORTS, SLOTS & CHASSIS¹	No wireless card installed option available 2x USB Type C Thunderbolt™ 4.0 with Power Delivery & DisplayPort 2x USB 3.2 Gen1 (1 with Power share) 1x HDMI 2.0 1x Contacted SmartCard Reader (optional) Universal Audio Jack Wedge Shaped Lock slot RJ45	No wireless card installed option available 2x USB Type C Thunderbolt™ 4.0 with Power Delivery & DisplayPort 2x USB 3.2 Gen1 (1 with Power share) 1x HDMI 2.0 1x Contacted SmartCard Reader (optional) Universal Audio Jack Wedge Shaped Lock slot RJ45	No wireless card installed option available 2x USB Type C Thunderbolt™ 4.0 with Power Delivery & DisplayPort 2x USB 3.2 Gen1 (1 with Power share) 1x HDMI 2.0 1x Contacted SmartCard Reader (optional) Universal Audio Jack Wedge Shaped Lock slot RJ45
THIN CLIENT MANAGEMENT	Wyse Management Suite Pro edition, version 4.0 (or above) is required for comprehensive management and hybrid cloud deployment (sold separately)	Wyse Management Suite Pro edition, version 4.0 (or above) is required for comprehensive management and hybrid cloud deployment (sold separately)	Wyse Management Suite Pro edition, version 4.0 (or above) is required for comprehensive management and hybrid cloud deployment (sold separately)
DIMENSIONS & WEIGHT^{1,3,5}	Width: 12.65" / 321.4 mm Height: 0.75" / 19.1 mm Depth: 8.35" / 212 mm Screen to Body: 82.9% (STB1) Starting Weight: 3.06 lbs / 1.39 kg	Width: 12.65" / 321.4 mm Height: 0.75" / 19.1 mm Depth: 8.35" / 212 mm Screen to Body: 82.9% (STB1) Starting Weight: 3.06 lbs / 1.39 kg	Width: 12.65" / 321.4 mm Height: 0.75" / 19.1 mm Depth: 8.35" / 212 mm Screen to Body: 82.9% (STB1) Starting Weight: 3.06 lbs / 1.39 kg
REGULATORY AND ENVIRONMENTAL COMPLIANCE¹	Regulatory Model Number: P165G Regulatory Type Numbers (RTNs): P165G001: RPL UMA U15 + N-1 ADL UMA + RPL UMA U15 2nd PCB P165G002(RTN) - RPL UMA P28 P165G003(RTN) - RPL DSC P28 ENERGY STAR compliant configurations available EPEAT Gold Registered. For specific country participation and rating, please see www.epeat.net TCO compliant configurations available Trade Agreements Acts (TAA) configurations available Halogen-Free / Arsenic-Free BFR / PVC free ⁹	Regulatory Model Number: P165G Regulatory Type Numbers (RTNs): P165G001: RPL UMA U15 + N-1 ADL UMA + RPL UMA U15 2nd PCB P165G002(RTN) - RPL UMA P28 P165G003(RTN) - RPL DSC P28 ENERGY STAR compliant configurations available EPEAT Gold Registered. For specific country participation and rating, please see www.epeat.net TCO compliant configurations available Trade Agreements Acts (TAA) configurations available Halogen-Free / Arsenic-Free BFR / PVC free ⁹	Regulatory Model Number: P165G Regulatory Type Numbers (RTNs): P165G001: RPL UMA U15 + N-1 ADL UMA + RPL UMA U15 2nd PCB P165G002(RTN) - RPL UMA P28 P165G003(RTN) - RPL DSC P28 ENERGY STAR compliant configurations available EPEAT Gold Registered. For specific country participation and rating, please see www.epeat.net TCO compliant configurations available Trade Agreements Acts (TAA) configurations available Halogen-Free / Arsenic-Free BFR / PVC free ⁹
INPUT¹	Optional 10-Finger Touch Display Spill Resistant Non-Backlit Keyboard Spill Resistant Backlit Keyboard	Optional 10-Finger Touch Display Spill Resistant Non-Backlit Keyboard Spill Resistant Backlit Keyboard	Optional 10-Finger Touch Display Spill Resistant Non-Backlit Keyboard Spill Resistant Backlit Keyboard
WARRANTY AND SERVICE¹	Limited Hardware Warranty ⁴ , Standard 3 year Mail-in Service after Remote Diagnosis ¹¹ , optional 3, 4 and 5 year hardware warranty extensions, and 3-5 year Dell ProSupport contracts available ¹²	Limited Hardware Warranty ⁴ , Standard 3 year Mail-in Service after Remote Diagnosis ¹¹ , optional 3, 4 and 5 year hardware warranty extensions, and 3-5 year Dell ProSupport contracts available ¹²	Limited Hardware Warranty ⁴ , Standard 3 year Mail-in Service after Remote Diagnosis ¹¹ , optional 3, 4 and 5 year hardware warranty extensions, and 3-5 year Dell ProSupport contracts available ¹²
PERIPHERAL ECOSYSTEM¹	Wide range of accessories designed and tested for the Latitude 5x40 enable productivity when working remote, on the go or in the office.	Wide range of accessories designed and tested for the Latitude 5x40 enable productivity when working remote, on the go or in the office.	Wide range of accessories designed and tested for the Latitude 5x40 enable productivity when working remote, on the go or in the office.
SUSTAINABILITY	Panel Lid Cover: 71% recycled/bio-based material used in the lid cover (20% recycled carbon fiber, 30% PCR, 21% bio-based) Panel Antenna Cover: 30% PCR plastics Panel Bezel: 50% PCR plastics Palm-Rest, Inner Frame, Battery Housing: 50% PCR plastics Battery Filler: 35% PCR plastics Speaker Enclosure: 35% PCR plastics Fan Housing Enclosure: 28% Ocean-Bound Plastic Bottom Door: 20% recycled carbon fiber, 30% PCR, 21% bio-based Rubber feet: 42% bio-based material Packaging made from 100% recycled or renewable materials 60W Type-C Blackchin Adapter, 65W Type-C Pecos Rugged Adapter: 50% PCR resin 100W Type-C adapter: 90% recycled plastics (PCR resin) in AC adapter exterior; 50% recycled copper wire for DC adapter cable	Panel Lid Cover: 71% recycled/bio-based material used in the lid cover (20% recycled carbon fiber, 30% PCR, 21% bio-based) Panel Antenna Cover: 30% PCR plastics Panel Bezel: 50% PCR plastics Palm-Rest, Inner Frame, Battery Housing: 50% PCR plastics Battery Filler: 35% PCR plastics Speaker Enclosure: 35% PCR plastics Fan Housing Enclosure: 28% Ocean-Bound Plastic Bottom Door: 20% recycled carbon fiber, 30% PCR, 21% bio-based Rubber feet: 42% bio-based material Packaging made from 100% recycled or renewable materials 60W Type-C Blackchin Adapter, 65W Type-C Pecos Rugged Adapter: 50% PCR resin 100W Type-C adapter: 90% recycled plastics (PCR resin) in AC adapter exterior; 50% recycled copper wire for DC adapter cable	Panel Lid Cover: 71% recycled/bio-based material used in the lid cover (20% recycled carbon fiber, 30% PCR, 21% bio-based) Panel Antenna Cover: 30% PCR plastics Panel Bezel: 50% PCR plastics Palm-Rest, Inner Frame, Battery Housing: 50% PCR plastics Battery Filler: 35% PCR plastics Speaker Enclosure: 35% PCR plastics Fan Housing Enclosure: 28% Ocean-Bound Plastic Bottom Door: 20% recycled carbon fiber, 30% PCR, 21% bio-based Rubber feet: 42% bio-based material Packaging made from 100% recycled or renewable materials 60W Type-C Blackchin Adapter, 65W Type-C Pecos Rugged Adapter: 50% PCR resin 100W Type-C adapter: 90% recycled plastics (PCR resin) in AC adapter exterior; 50% recycled copper wire for DC adapter cable

Learn more at Dell.com/CloudClientWorkspace



Learn more about
Dell thin client solutions
Dell.com/CloudClientWorkspace



Contact a
Dell Technologies Expert

Product Disclosures:

- 1 Offering may vary by country and by configuration and operating system. Some items may be available after product introduction. For complete details, refer to the Setup and Specifications published on www.dell.com/support. At launch, Dell ThinOS (2303 or above) and Dell Hybrid Client (v2.0 or above) are customer install options sold separately and require the device to be configured with 8 GB Memory, 128 GB or higher capacity SSD/HDD and Ubuntu Linux 22.04 with Dell Client Agent Enabler (DCA-Enabler). Windows 10 IoT Enterprise LTSC 2021 with the Latitude 5440 is coming soon.
- 2 A 64-bit operating system is required to support 4GB or more of system memory.
- 3 GB means 1 billion bytes and TB equals 1 trillion bytes; actual capacity varies with preloaded material and operating environment and will be less.
- 4 The stated Watt Hour (Whr) is not an indication of battery life.
- 5 Intel Rapid Storage Technology requires a HDD, mSATA, or an SSD, as primary storage device and Windows OS required
- 6 Wireless antenna available only at time of system purchase.
- 7 Dell Latitude 5330/5430/5530 are brominated flame retardant free (BFR-free) and polyvinyl chloride free (PVC-free); meeting the definition of BFR-/PVC-free as set forth in the iNEMI Position Statement on the 'Definition of Low-Halogen Electronics (BFR-/CFR-/PVC-free)'. Plastic parts contain less than 1,000 ppm (0.1%) of bromine (if the Br source is from BFRs) and less than 1,000 ppm (0.1%) of chlorine (if the Cl source is from CFRs or PVC or PVC copolymers). All printed circuit board (PCB) and substrate laminates contain bromine/chlorine total less than 1,500 ppm (0.15%) with a maximum chlorine of 900 ppm (0.09%) and maximum bromine being 900 ppm (0.09%).
- 8 4G LTE antenna and 5G available only at time of system purchase. Mobile Broadband Subject to service provider's broadband subscription and coverage area; additional charges apply.
- 9 Mail-in Service after Remote Diagnosis: Remote Diagnosis is determination by online/phone technician of cause of issue; may involve customer access to inside of system and multiple or extended sessions. If issue is covered by Limited Hardware Warranty (www.dell.com/warranty) and not resolved remotely, technician and/or part will be dispatched, usually within 1 business day following completion of Remote Diagnosis. Availability varies. Other conditions apply.
- 10 Limited Hardware Warranty: For copy of Limited Hardware Warranty, write Dell USA LP, Attn: Warranties, One Dell Way, Round Rock, TX 78682 or see www.dell.com/warranty.
- 11 Dell Services: Availability and terms of Dell Services vary by region. For more information, visit www.dell.com/servicesdescriptions.
- 12 GB means 1 billion bytes and TB equals 1 trillion bytes; significant system memory may be used to support graphics, depending on system memory size and other factors.
- 13 Weights vary depending on configuration and manufacturing variability; 0.990 kg configurability: up to i7 vPro (U15), FHD NT Ultralight LCD, WLAN, 41Whr battery, M.2 2230 class 35 SSD, No security, non-backlit KB.
- 14 Based on Dell Internal Analysis, October 2022
- 15 Based on Dell analysis, October 2022. Dell Optimizer not available in OptiPlex 3000 series, Latitude Chromebook Enterprise, and Linux-based devices. Feature availability and functionality may vary by model. For more details visit: <https://www.delltechnologies.com/asset/en-us/solutions/business-solutions/technical-support/dell-optimizer-features-availability-matrix.pdf.external>
- 16 Simultaneous multi-network connection (or Connection based teaming) is a new connectivity feature under ExpressConnect. It simultaneously sends and receives data and video traffic using two or more wired or wireless connections. Simultaneous multi-network connection works with wired and wireless networks. For select Dell platforms, a USB Wi-Fi adapter is required to connect a second Wi-Fi network. Based on Dell internal analysis, September 2021.
- 17 Based on Dell internal analysis January 2023. CLM-006662 Agent Enabler (DCA-Enabler).

Technical specifications subject to change without prior notice. Product availability varies by country. Please contact your Dell representative for more information.

© 2023 Dell Inc. or its subsidiaries. All Rights Reserved. Dell and other trademarks are trademarks of Dell Inc. or its subsidiaries. Other trademarks may be trademarks of their respective owners. USB Type-C® and USB-C® are registered trademarks of USB Implementers Forum.