

Sharkoon



NIGHTSHARK

ATX PC CASE

15 YEARS
SHARKOON

Case Versions



NIGHT SHARK RGB
(3x 120 mm RGB LED Fans)



NIGHT SHARK Blue
(3x 120 mm LED Fans)



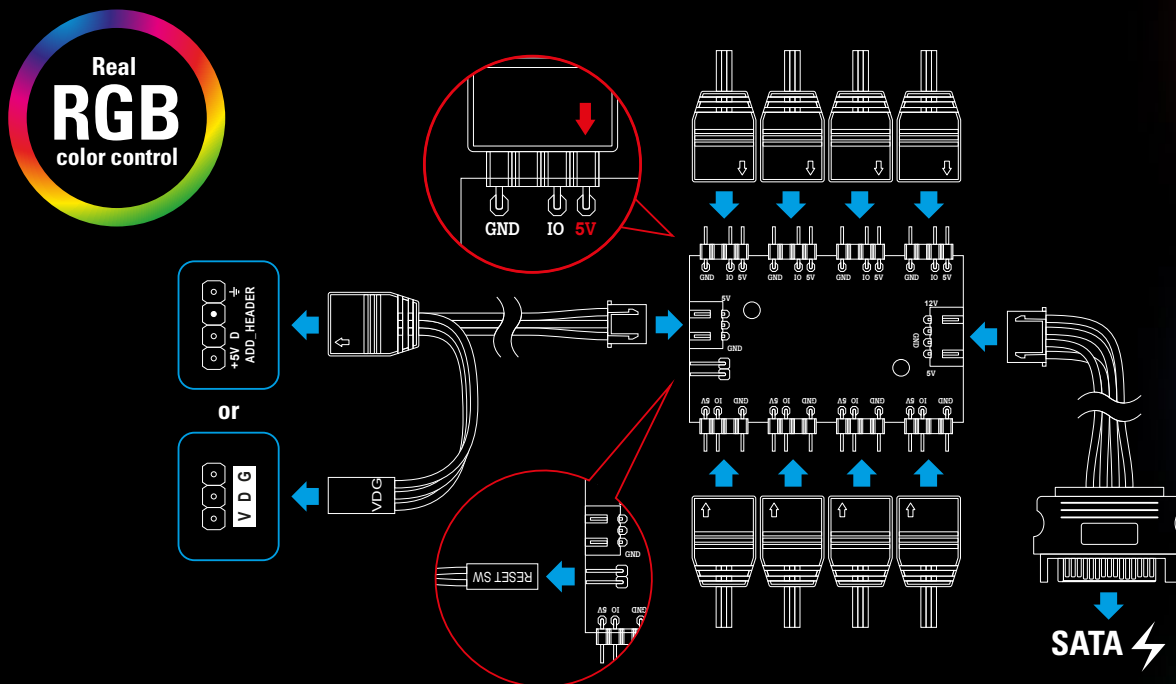
NIGHT SHARK Red
(3x 120 mm LED Fans)



NIGHT SHARK Lite
(Fans Optional)

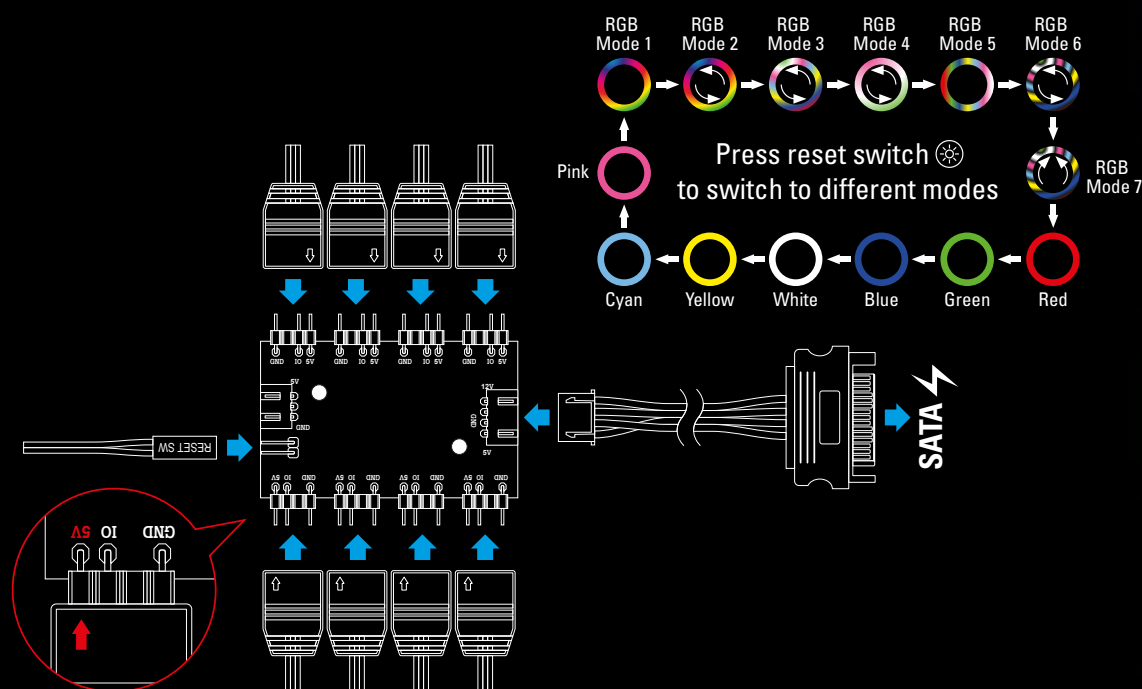
8-Port Addressable RGB Hub

The NIGHT SHARK RGB includes an 8-port addressable RGB hub with a mainboard connector. The hub allows the pre-installed addressable RGB fans and up to five more RGB components to be easily controlled and synchronized via the mainboard software. RGB components can illuminate in up to 16.8 million colors with multiple color effects.



Manual Color Control

The NIGHT SHARK RGB has a manual color control function for mainboards without an addressable RGB connector. Once installed inside the case and connected to a SATA connector from the power supply, the included RGB fans as well as other RGB components can be illuminated in one of 14 color modes, or be completely switched off, by pressing the reset button on the top of the case.



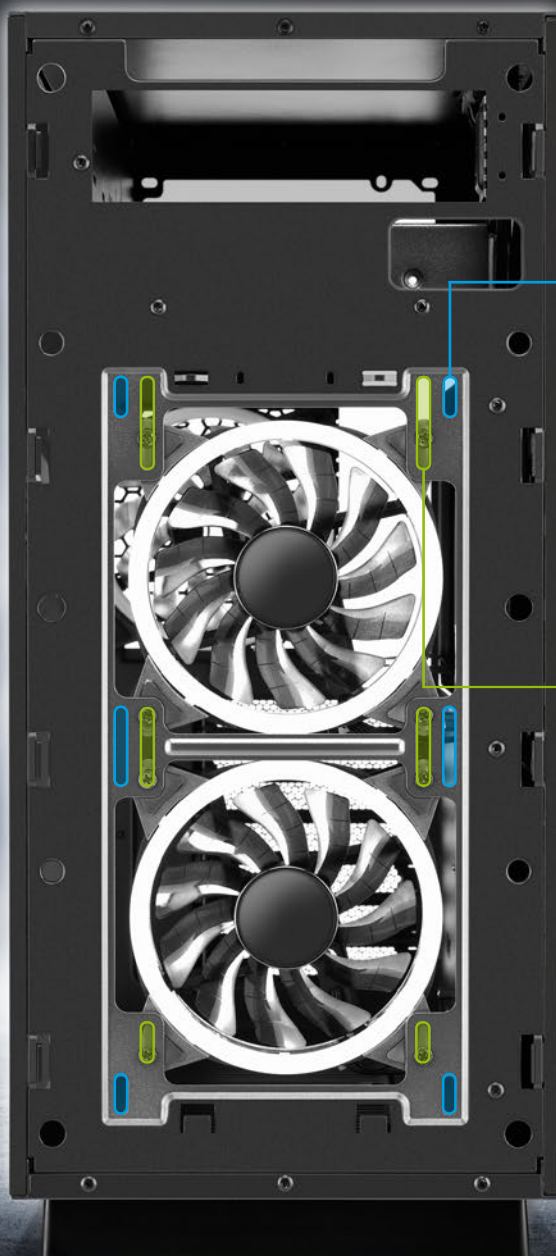
Diverse Airflow Setups



The NIGHT SHARK provides plenty of possibilities for your desired airflow. There are eight installation locations for fans and three for radiators. And what's even cooler: Thanks to the tempered glass side panel and the power supply tunnel positioned in the top of the case, all the components can be perfectly viewed - from the illuminated RAM modules, right up to fan of the power supply.

Diverse Airflow Setups

Front Panel



2x 140 mm Fans
(Optional)

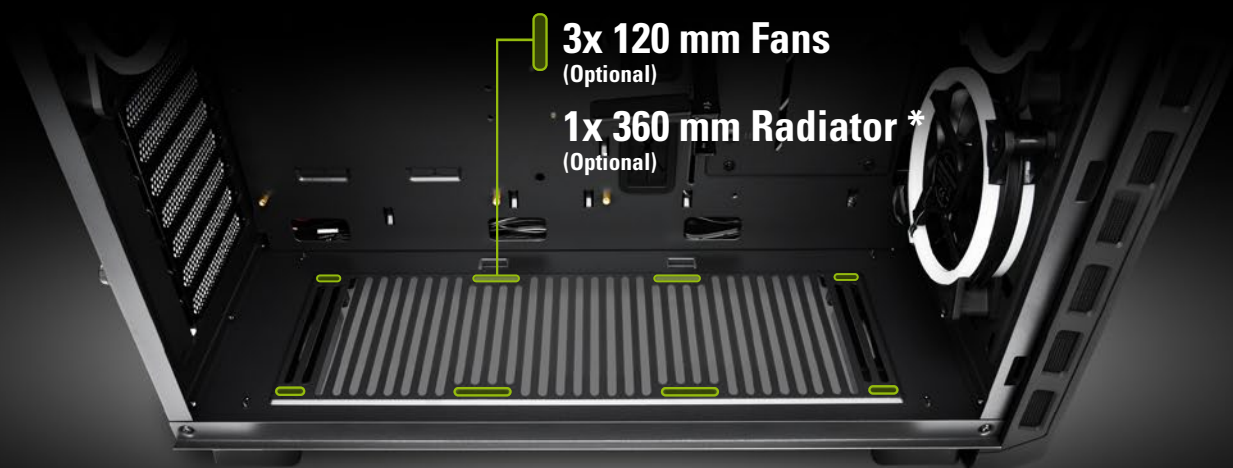
1x 280 mm Radiator
(Optional)

2x 120 mm Fans

(NIGHT SHARK RGB: 2x RGB LED Fans Pre-Installed)
(NIGHT SHARK Blue/Red: 2x LED Fans Pre-Installed)
(NIGHT SHARK Lite: Fans Optional)

1x 240 mm Radiator
(Optional)

Bottom Panel



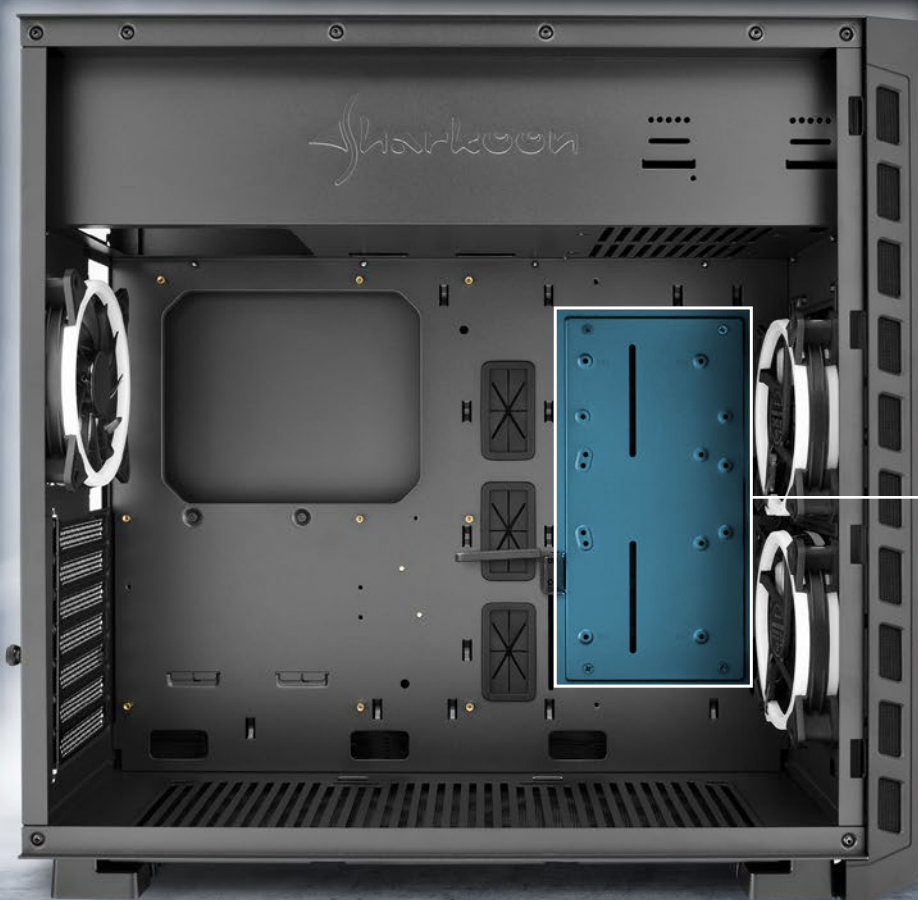
3x 120 mm Fans
(Optional)

1x 360 mm Radiator *
(Optional)

* Internal USB 3.0 connection to mainboard may conflict with space for radiator.
Check before installation.

Diverse Airflow Setups

Side Panel



If the HDD/SDD mounting cover is removed, up to two 120 mm fans or one 240 mm radiator can be installed.

Rear Panel



1x 120 mm Fan

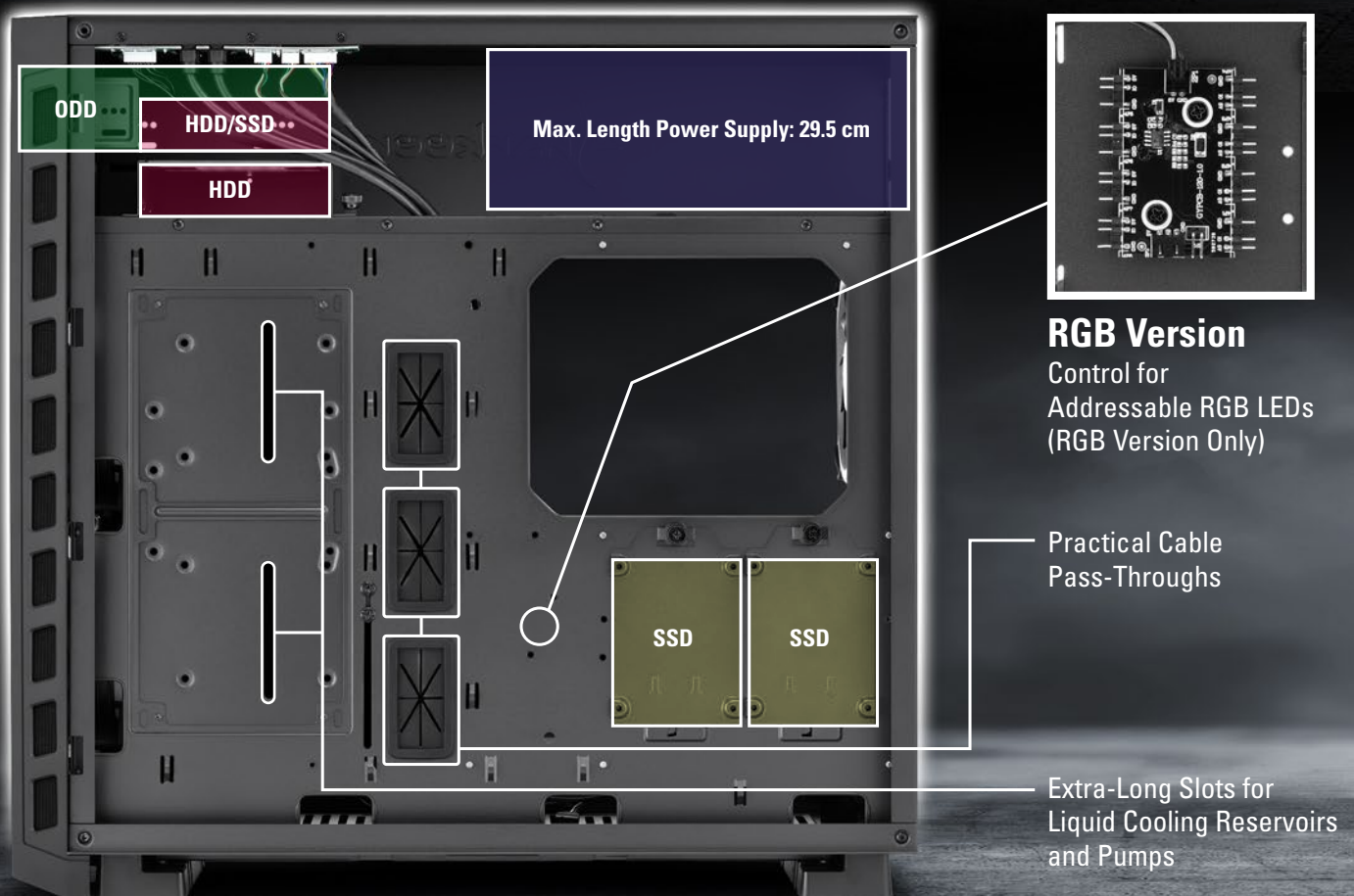
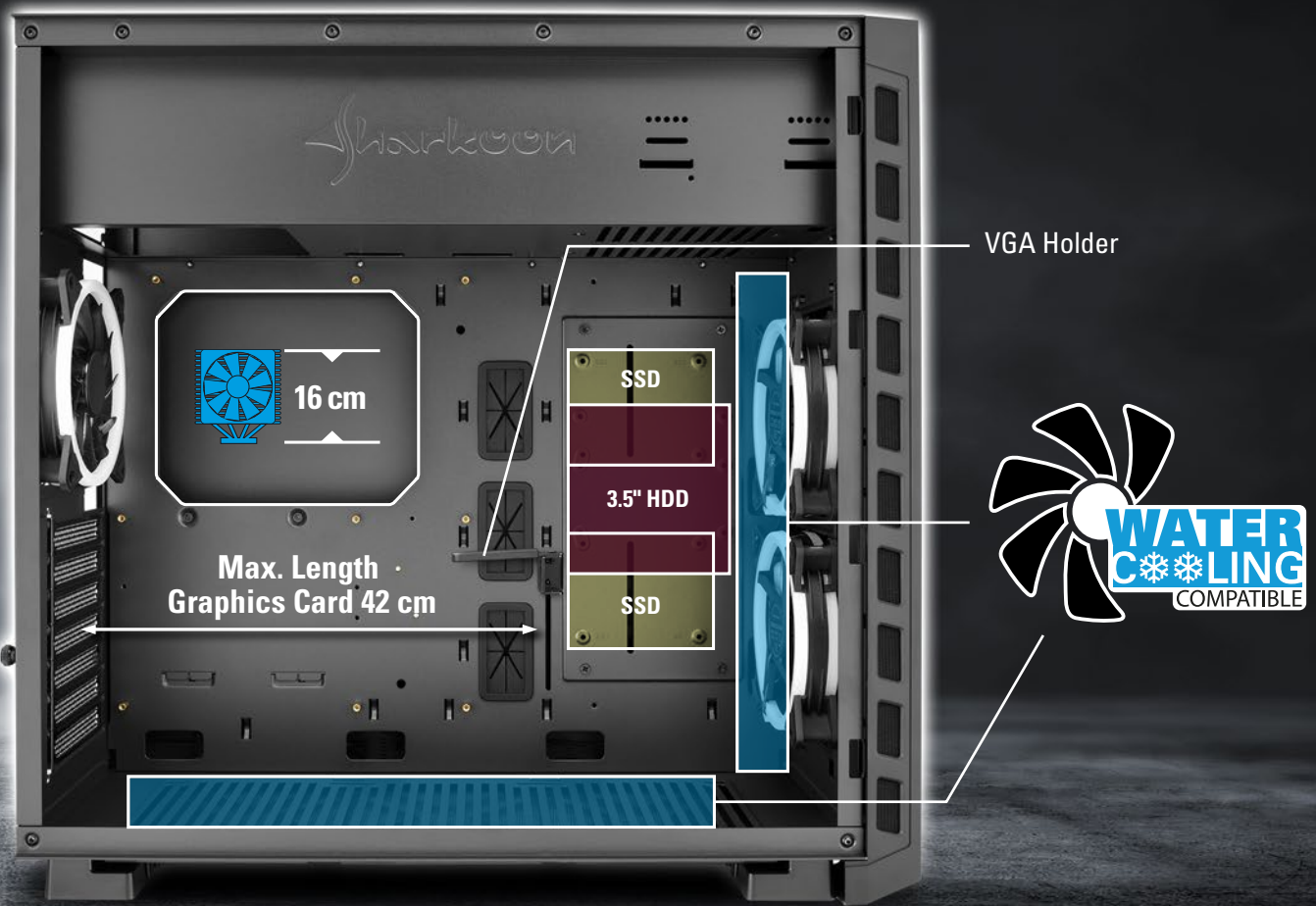
(NIGHT SHARK RGB: 1x RGB LED Fan Pre-Installed)
(NIGHT SHARK Blue/Red: 1x LED Fan Pre-Installed)
(NIGHT SHARK Lite: Fan Optional)



Voracious Appetite for Hardware!

Since high-performance hardware generally needs more space, we've utilized the inside of the NIGHT SHARK to its maximum: As well as the usual form factors, the case is also ready for mainboards with dual or multiple processors (SSI CEB / EEB). And it can easily swallow other big chunks, whether graphics cards, power supplies or CPU coolers. In addition, up to three 3.5" hard drives and up to five 2.5" drives will have room inside the shark's belly. As an extra snack, a 5.25" drive can be installed in the front panel. To make installing easier and ensure everything remains orderly, the NIGHT SHARK has various cable pass-throughs. The cabling can thus disappear through these behind the mainboard tray. Practical extra-long slots facilitate the installation of tanks for liquid cooling.

Sizable Installation Options



Tough, but Easily Tamed.

Cableless Front Panel Design



Large, Solid Stands

Removable Dust Filters
in the Front Panel

The NIGHT SHARK not only has a burly body, but also has solid stands which provide optimal stability and safety for your hardware. You can also tame the menacing dust and dirt of the gaming environment thanks to the easy-to-clean dust filters.



Robust, Detachable Dust Filter.



Easily Accessible Front Connectors

Specifications

NIGHTSHARK

General:

■ Form Factor:	ATX, E-ATX
■ Expansion Slots:	7
■ VGA Holder:	✓
■ Interior Painting:	✓
■ Cable Management System:	✓
■ Side Panel Tempered Glass:	✓
■ Dimensions (L x W x H):	50.3 x 21.0 x 47.5 cm

I/O:

■ USB 3.0 (Top):	2
■ USB 2.0 (Top):	2
■ Audio (Top):	✓

Max. Drive Bays:

■ 5.25":	1
■ 3.5":	3
■ 2.5":	5

Fan Configuration:

■ Front Panel:	NIGHT SHARK RGB: 2x 120mm RGB LED Fans, NIGHT SHARK Blue/Red: 2x 120mm LED Fans, NIGHT SHARK Lite: No Fans Included
■ Side Panel:	2x 120mm Fans or Radiator (Optional) *
■ Rear Panel:	NIGHT SHARK RGB: 1x 120mm RGB LED Fan, NIGHT SHARK Blue/Red: 1x 120mm LED Fan, NIGHT SHARK Lite: No Fans Included
■ Bottom Panel:	3x 120mm Fans or Radiator (Optional) **

Compatibility:

■ Mainboard:	Mini-ITX, Micro-ATX, ATX, E-ATX, SSI CEB, SSI EEB
■ Max. Length Graphics Card:	42 cm ***
■ Max. Height CPU Cooler:	16 cm
■ Max. Length Power Supply:	29.5 cm

Package Contents:

NIGHT SHARK, Accessory Set, Manual,
8 Port Hub for Addressable RGB LEDs (RGB version only)

* If HDD/SSD mounting cover is removed

** Internal USB 3.0 connection to mainboard may conflict with space for radiator.
Check before installation.

*** 30 cm if radiator is installed on side panel

Shipment box

Packing Unit: 1

Dimensions (L x W x H): 573 x 276 x 545 mm

Weight: 9.76 kg

Customs tariff no.: 84733080

Country of origin: China

NIGHT SHARK Lite



NIGHT SHARK Red



NIGHT SHARK Blue



NIGHT SHARK RGB

