

SVEN[®]

Gaming Keyboard

USER MANUAL



KB-G8400

www.sven.fi

Congratulations on the purchase of Sven keyboard!

Please read this User Manual before using the unit and retain this User Manual in safe place for future reference.

COPYRIGHT

© SVEN PTE. LTD. Version 2.0 (22.08.2024).

This Manual and information contained in it are copyrighted. All rights reserved.

TRADEMARKS

All trademarks are the property of their legal holders.

NOTICE OF RESPONSIBILITY RESTRICTION

Despite the exerted efforts to make this Manual more exact, some discrepancies may occur. The information of this Manual is given on "as is" terms. The author and the publisher do not bear any liability to a person or an organization for loss or damages which have arisen from the information contained in the given Manual.

UNPACKING

- Unpack the device carefully. Make sure there are no accessories left in the box. Check up the device for damage; if the product was damaged during transportation, address the firm which carried out the delivery; if the product functions incorrectly, address the dealer at once.
- Shipping and transportation equipment is permitted only in the original container.
- Does not require special conditions for realization.
- Dispose of in accordance with regulations for the disposal of household and computer equipment.
- The date of manufacture of the product is indicated on the box.

APPLICATION

KB-G8400 keyboard is an input device. It is designed to enter information into the computer, as well as control the operation of the computer.

PACKAGE CONTENTS

- Keyboard — 1 pc
- User Manual — 1 pc
- Warranty card — 1 pc

SPECIAL FEATURES

- Multifunctional software.
- Programmable buttons.
- 12 multimedia (FN) keys.
- Keyboard brightness backlighting adjustment.
- Variable tilt angle.
- Durable braided cable.


SYSTEM REQUIREMENTS

- OC Windows.
- Free USB port.

INSTALLATION

- Connect the keyboard to an available USB port of your PC.
- Installation of keyboard is automatic after its connection to USB port of PC.

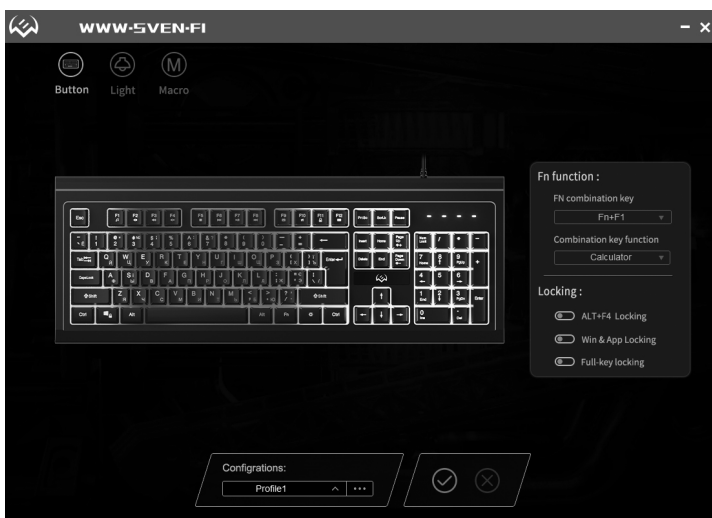
DESCRIPTION OF QUICK ACCESS KEYS FUNCTION

Fn + F1	Start media player	Fn + F11	Lock keyboard
Fn + F2	Volume down	Fn + F12	Start calculator
Fn + F3	Volume up	Fn + WIN	WIN key lock
Fn + F4	Mute/Unmute	Fn + Pg Up	Increase backlight brightness level (for the modes Fn + 0, 2, 6)
Fn + F5	Stop playing	Fn + Pg Down	Decrease backlight brightness level (for the modes Fn + 0, 2, 6)
Fn + F6	Play previous track	Fn + W	Switch WASD keys to arrows and back
Fn + F7	Play/Pause	Fn + Scroll Lock	Change backlighting mode
Fn + F8	Play next track	Fn + "0-9"	Change backlighting mode
Fn + F9	Start e-mail app	Fn + 	Turn ON/OFF backlighting
Fn + F10	Open homepage		

Note. Press the shortcut keys while holding the Fn key.

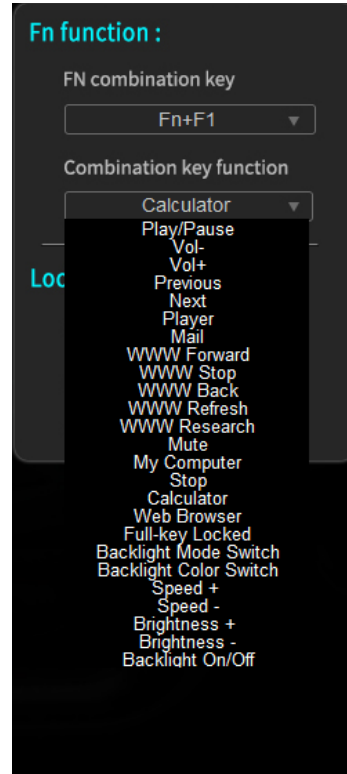
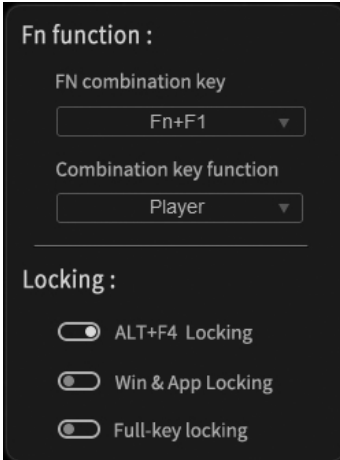
INSTALLATION OF THE SOFTWARE

Software is hosted at SVEN official web-site www.sven.fi. Download and install the software. Software extends features of keyboard, allows to configure backlight modes, re-assign keys and program macros.

Button menu (buttons configuration)

Functional keys assignment (Fn function)

In the Fn function window: the keys F1–F12 are assigned with values among the functions, presented in the list. The functions allow to control media player, sound and a keyboard, as well as open different system programs.



Blocking functions Locking:

- **ALT+F4 Locking** — blocking keyboard shortcuts;
- **Win & App Locking** — blocking a Windows key;
- **Full-key locking** — complete blocking of a keyboard.

List of commands, supported for programming the functional buttons.

Re-assignment of individual keys

In order to re-assign (assign) new functions to the keys, it is necessary to click on a key with a mouse. A window will open, like on a screenshot below.

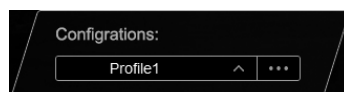


In a window on the left there are the following settings:

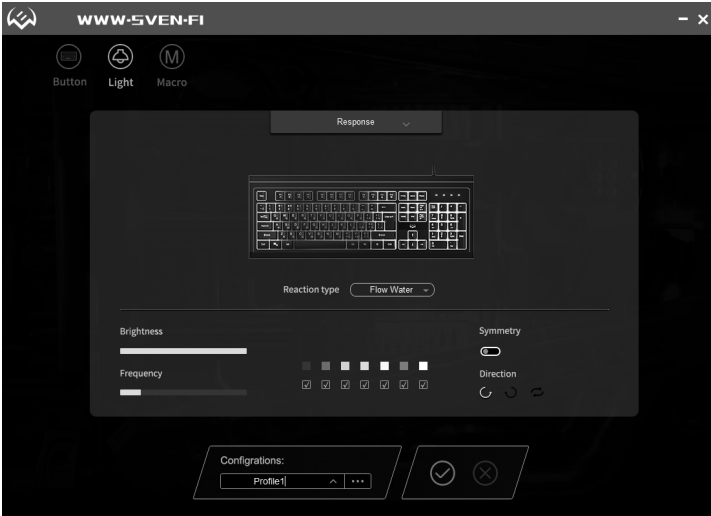
- **Default** — returns key assignment by default;
- **Media** — multimedia functions;
- **Light control** — functions to adjust keyboard backlight;
- **Special function** — assigns FN or Full-key Locked (keyboard blocking) function to a key;
- **Disable** — disables a key;
- **Macro** — macro command (it is necessary to programme the macros in advance);
- **Keyboard keys** — assign any button from a keyboard.

Creation of profiles

In a Configuration window (a button with three dots) a user can save, load or delete a profile. In order to return to default settings, press Reset.



Backlight configuration



Light menu helps configure the keyboard backlight and includes the following operation modes:

- **Backlight Off** — turning off the backlight;
- **Breathing** — alternate turning on of the selected colors. Number of indicating colors can be set by a user. Flicker frequency is set by a user via a Frequency control;
- **Constant** — the keyboard is lighted with a single set color, no flickering. Backlight bright-ness is set by a user via a Brightness control;
- **Response** — backlight is turned on when the keyboard buttons are pressed. Lighting se-quence and number of colors is set by a user. Lighting sequence and number of response are set by Frequency and Brightness controls. There is an option to set different visual backlight effects and change their settings;
- **Neon** — lighted alternately by all seven colors. Flicker frequency is set by a user via a Frequency control. Smooth alternation of colors;
- **Ambilight** — progressive wave effect. Flicker frequency is set by a user via a Frequency control. Direction of the progressive backlight wave can be changed using Direction (left/right) and Simmety (from the middle) options;

