

# LogiLink®

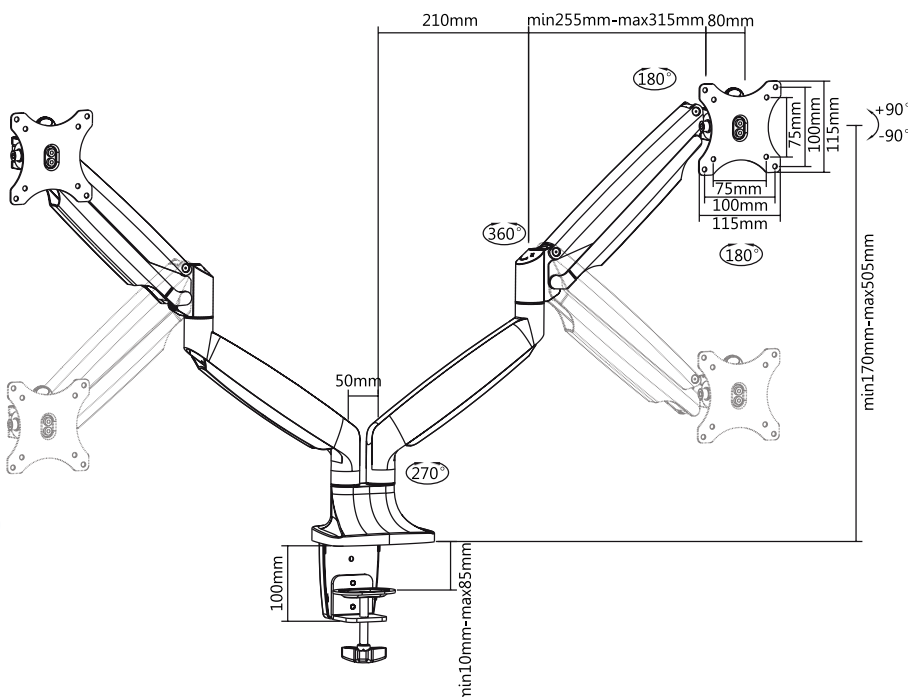
## Alumium Dual Monitor Desk Mount with Gas Spring for 13"-32" Flat & Curved Monitor

Art. No.: BP0043

Easy installation and compatible with VESA standard max. 100x100mm.

### Features:

- » Super strong mounting brackets: Solid-reinforced Cold Steel, durable product with maximum capacity of 9kg for each arm
- » Maximum arm extension length is 525mm, Tilt capacity: 90°~ -90°, Swivel capacity: 90°~ -90° and Rotation capacity: 90°~ -90°
- » Compatible with VESA 75x75mm, 100x100mm
- » Clamp and grommet mount included
- » Easy to install
- » Fit for 13-32 inch LCD Monitor



Grommet or desk-clamp mounting available



\* The specifications and pictures are subject to change without notice.  
\* All trade names referenced are the registered trademark of their respective owners.



BP0043



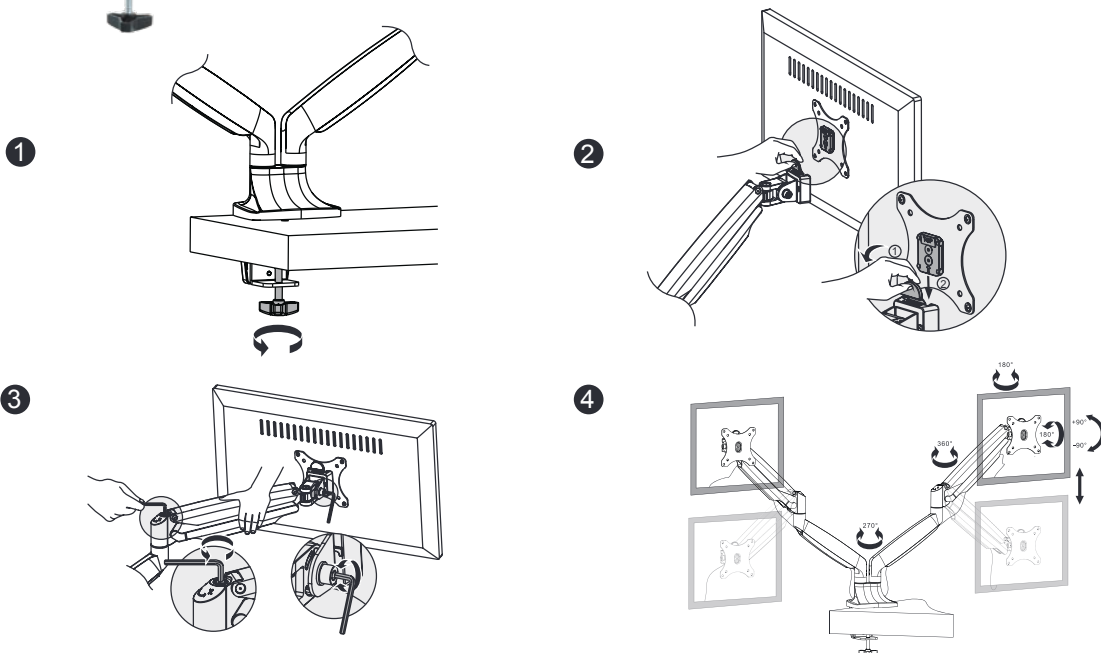
Made in China



# LogiLink®

## Alumium Dual Monitor Desk Mount with Gas Spring for 13"-32" Flat & Curved Monitor

Art. No.: BP0043



### Specification:

Screen Size	13"-32"
Rated Load	1-9kg/2.2-19.8lbs for each arm
VESA	75x75, 100x100
Arm Extend	525mm
Tilt	90° ~ -90°
Swivel	90° ~ -90°
Rotate	90° ~ -90°
Product Size	1100 x 125 x 670mm



### Package Contents:

- » 1 x Alumium Dual Monitor Desk Mount
- » 1 x Screw Package
- » 1 x User Manual

### Package Informations:

- » Packing Dimension: mm
- » Packing Weight: kg
- » Carton Dimension: mm
- » Carton Q'ty: pcs
- » Carton Weight: kg



\* The specifications and pictures are subject to change without notice.  
\*All trade names referenced are the registered namework of their respective owners.



BP0043



4 052792 046489

Made in China